

U.S. PUBLIC LAND SURVEY MONUMENT

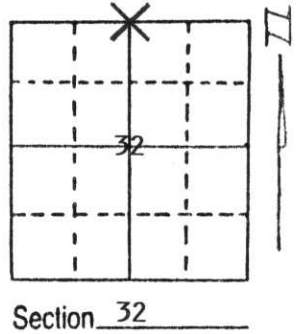
Note: This form is intended and designed to fulfill all requirements of Wisconsin Administrative Code, Chapter A-E 5.02, U.S. Public Land Survey Monument Record (3) (a) (b) (c) (d) (e) (f) (g) (h) (i). An additional sheet may be added if necessary to conform with said requirements.

(a) Corner location: Township 32 North

Range 6 East

Town/City/Village of Merrill

County Lincoln

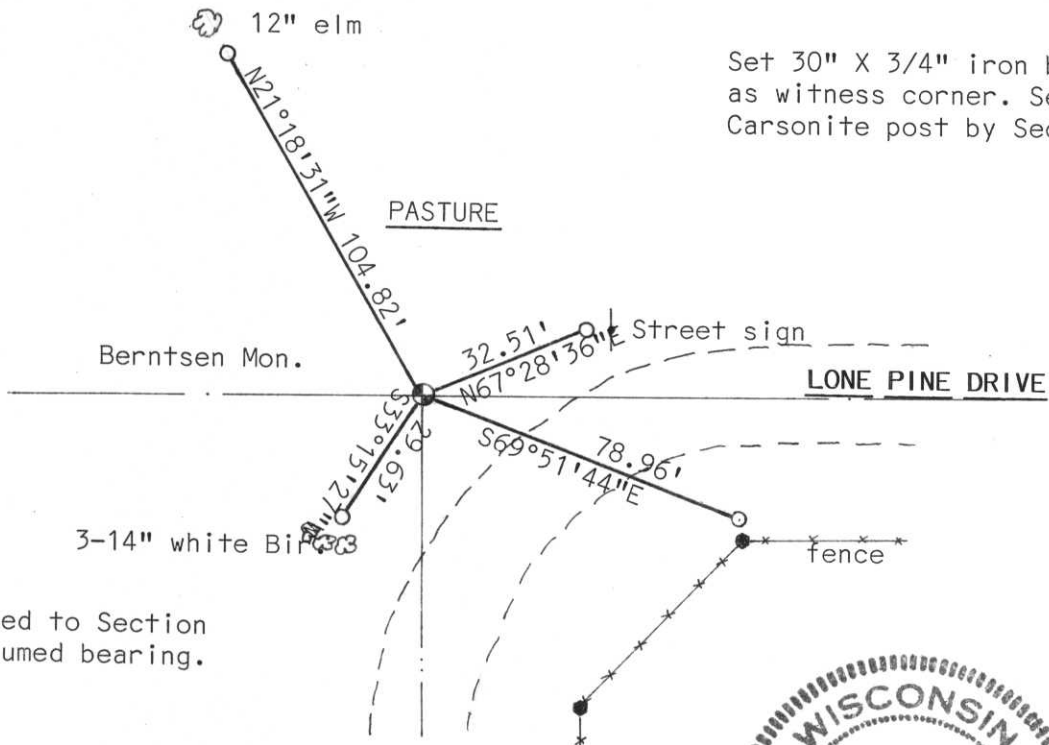


Section 32

(b) (f) (g) (h) Description of monument found at this corner and if it was accepted, state all evidence (material, testimonial, occupational, plats, records, other monuments) used as a basis for accepting. If not accepted or if nothing was found, state evidence used as basis for establishing location. If reestablished through lost corner proportionate methods, indicate all monuments, distances and directions used to establish.

Found 1" iron bar in place on centerline intersection. Corner fell off the road in a pasture. Did not find any additional evidence. Replaced iron bar with Lincoln Co. Berntsen Monument. Tied corner into Section traverse and corner fit well within section.

(c) (d) (e) Plan view of corner with ties to at least 4 witness monuments. If in disagreement with previously established corner, show the distances between the two corners and also indicate the ties to the disputed corner.



Set 30" X 3/4" iron bar as witness corner. Set Carsonite post by Section cor.

RECEIVED AT LINCOLN COUNTY COURTHOUSE THIS 9th DAY OF July 1997
Edwin R. Abendroth
 TAX DESCRIPTION OFFICE

north referenced to Section breakdown. Assumed bearing.

(i) I, Edwin R. Abendroth
 (type or print name) certify that the corner location on this record was determined by me or under my direction and control and that this U.S. Public Land Survey Monument Record is correct and complete to the best of my knowledge and belief.

Edwin R. Abendroth July 7, 1997

Signature

Date



Index No. 0-7



2002 7 30



2002 7 30



2002 7 30

2002 7 30

