

# U.S. PUBLIC LAND SURVEY MONUMENT RECORD

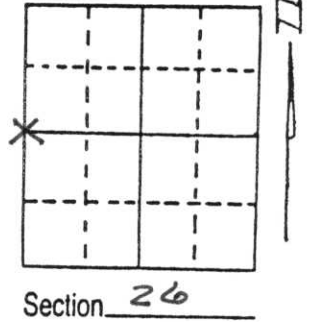
Note: This form is intended and designed to fulfill all requirements of Wisconsin Administrative Code, Chapter A-E 5.02, U.S. Public Land Survey Monument Record (3) (a) (b) (c) (d) (e) (f) (g) (h) (i). An additional sheet may be added if necessary to conform with said requirements.

(a) Corner location: Township 32 North

Range 6 East

Town/City/Village MERRILL

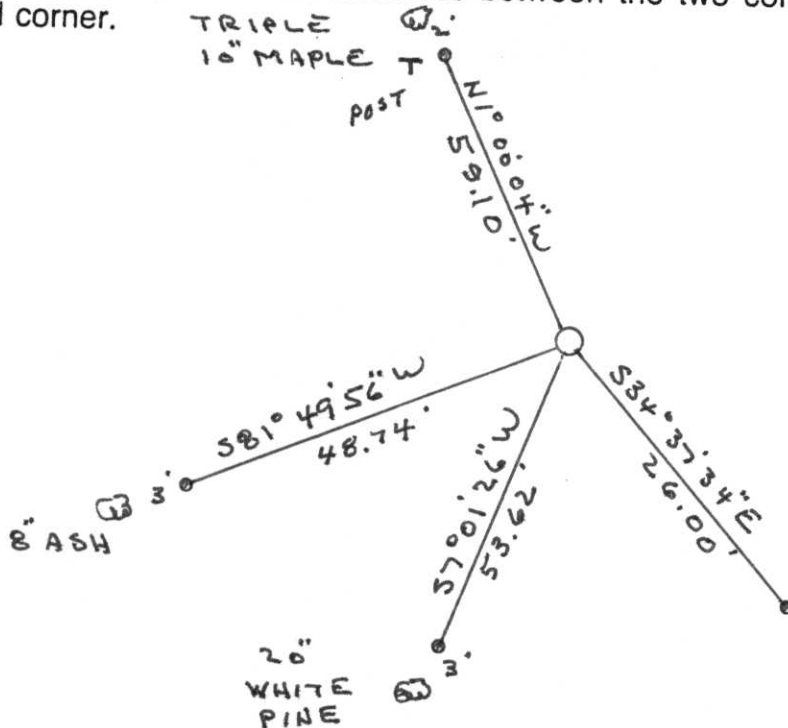
County LINCOLN



(b) (f) (g) (h) Description of monument found at this corner and if it was accepted, state all evidence (material, testimonial, occupational, plats, records, other monuments) used as a basis for accepting. If not accepted or if nothing was found, state evidence used as basis for establishing location. If reestablished through lost corner proportionate methods, indicate all monuments, distances and directions used to establish.

Found 2 inch x6 foot iron pipe at fence corner of fences running west and south. Traces of fence to north  
 Replaced pipe with Berntsen monument.  
 Set witness monuments with caps.

(c) (d) (e) Plan view of corner with ties to at least 4 witness monuments. If in disagreement with previously established corner, show the distances between the two corners and also indicate the ties to the disputed corner.



7/8" x 30" PIN WITH PLASTIC CAP



(i) I, Robert K. Fergot

(type or print name) certify that the corner location on this record was determined by me or under my direction and control and that this U.S. Public Land Survey Monument Record is correct and complete to the best of my knowledge and belief.

Robert K. Fergot June 17, 1998  
 Signature Date

RECEIVED AT LINCOLN COUNTY COURTHOUSE THIS 22nd DAY OF June 1998  
Pat Priber  
 TAX DESCRIPTION OFFICE

Index No. 5-17



2002 11 14





2002 11 14





2002 11 14