

U.S. PUBLIC LAND SURVEY MONUMENT RECORD

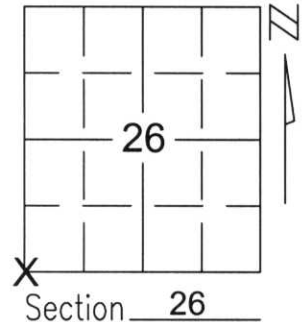
Note: This form is intended and designed to fulfill all requirements of Wisconsin Administrative Code, Chapter A-E 5.02, U.S. Public Land Survey Monument Record (3)(a)(b)(c)(d)(e)(f)(g)(h)(i). An additional sheet may be added if necessary to conform with said requirements.

(a) Corner location: Township 32 North

Range 6 East

Town/City/Village MERRILL

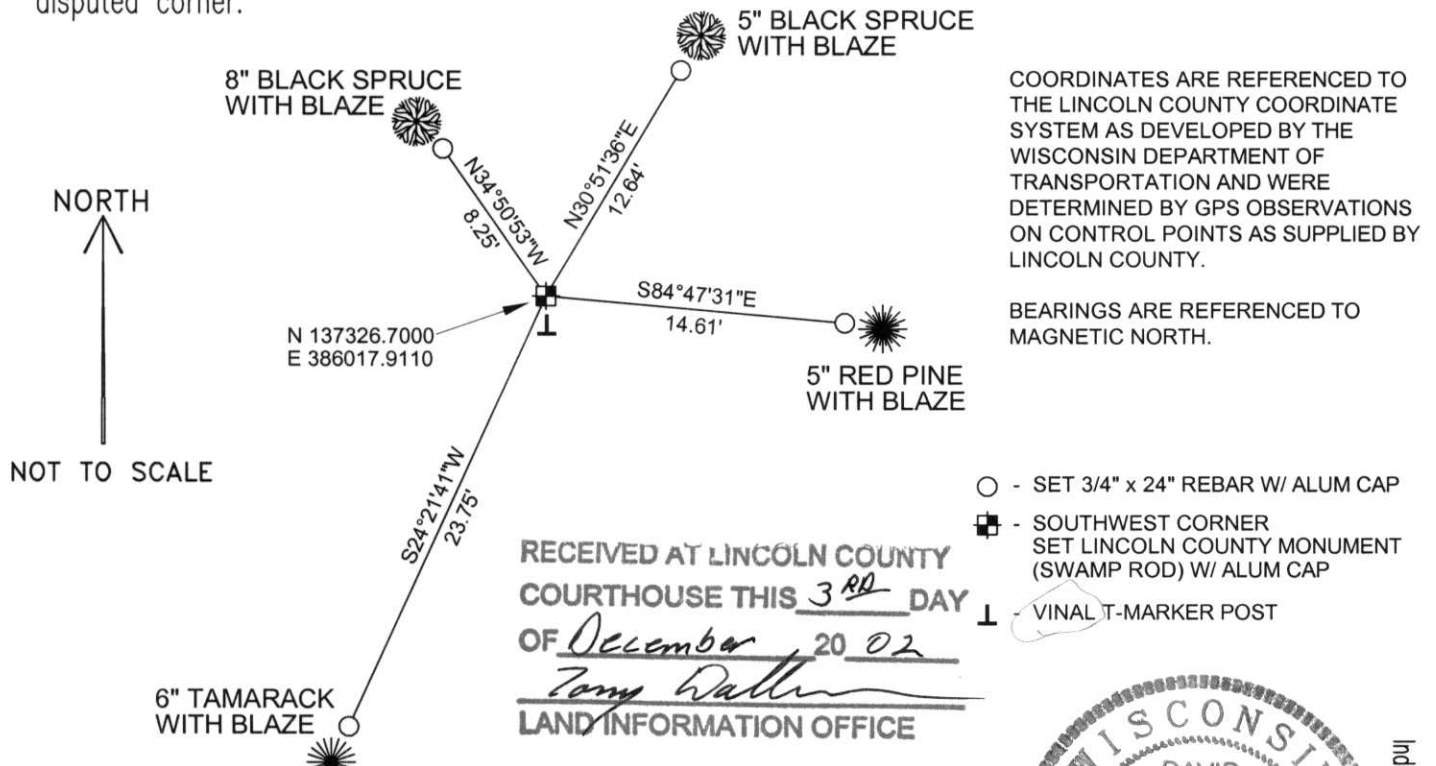
County LINCOLN



(b)(f)(g)(h) Description of monument found at this corner and if it was accepted, state all evidence (material, testimonial, occupational, plats, records, other monuments) used as a basis for accepting. If not accepted or if nothing was found, state evidence used as basis for establishing location. If reestablished through lost corner proportionate methods, indicate all monuments, distances and directions used to establish.

SEARCHED FOR SOUTHWEST CORNER OF SECTION 26 AND FOUND NOTHING.
 HELD FENCE LINE FROM NORTH 1/4 CORNER OF SECTION 34 TO FOUND 1" PIPE AT FORTY CORNER AT THE NORTHWEST CORNER OF THE NORTHEAST 1/4 OF THE NORTHEAST 1/4 SECTION 34; USED PROPORTIONATE DISTANCE BETWEEN THE NORTH 1/4 CORNER OF SECTION 34 AND THE NORTH 1/4 CORNER OF SECTION 35 TO RESET THE SOUTHWEST CORNER OF SECTION 26.
 SET 60" SWAMP ROD AT CALCULATED LOCATION. TIED OUT CORNER TO PERPETUATE CORNER LOCATION.

(c)(d)(e) Plan view of corner with ties to at least 4 witness monuments. If in disagreement with previously established corner, show the distances between the two corners and also indicate the ties to the disputed corner.



(i) I, David A. Renaud, RLS certify that the corner location on this record was determined by me or under my direction and control and that this U.S. Public Land Survey Monument Record is correct and complete to the best of my knowledge and belief.

David Renaud 11-29-02
 Signature Date



Index No. 263266

4-17

SW
MARKER
1998

263266

