

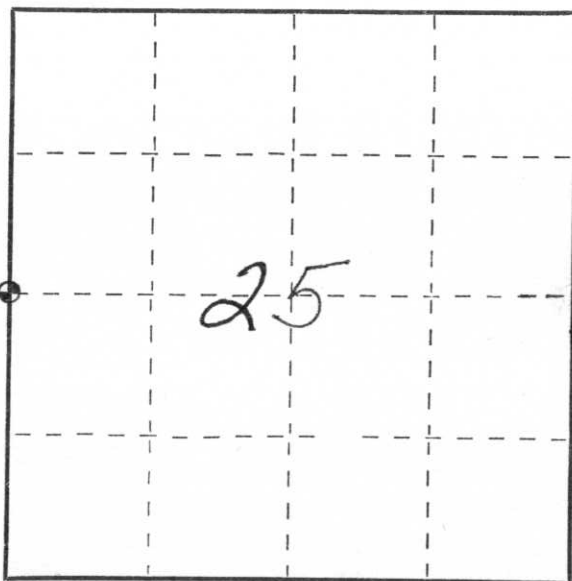
CERTIFIED LAND CORNER RESTORATION

Index No. S-21

State of Wisconsin }  
 County of LINCOLN } ss.

I EDWIN R. ABENDROTH, do hereby certify that on the 5TH day of MAY, 1978, I found evidence of the WEST 1/4 corner of SEC. 25 Township 32, North, Range 6 EAST, Fourth, Principal Meridian, as described hereon; and that from this evidence I established a new monument and accessories as described hereon to perpetuate the original location of this corner.

Resident witnesses:



○ = Corner monument restored.

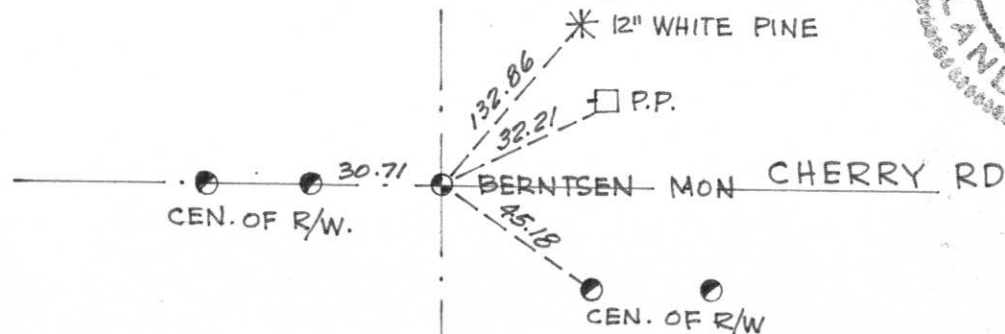
History of original corner establishment:

NORTH BETWEEN SECTIONS 25 AND 26  
SET 1/4 SECTION POST 40.00 CHS.  
PINE 30" N 13°W 12 LKS.  
HEMLOCK 8" N 24°E 27 LKS.

Description of corner evidence found:

STATE OF WIS. DIV. OF HWYS. SEARCHED AREA AND FOUND NO EVIDENCE DURING RECONSTRUCTION OF C.T.H. "K"

Description of monument and accessories I established to perpetuate the original location of this corner:



Dated at WAUSAU, Wis., this 14TH day of JUNE, 1978.

Signature Edwin R. Abendroth Title R.L.S. Registration No. S-798  
 (County Surveyor, Registered Land Surveyor, or other duly authorized official)

Office of Register of Deeds, County of \_\_\_\_\_, I hereby certify that the within instrument was filed in this office for record on the \_\_\_\_\_ day of \_\_\_\_\_, 19\_\_\_\_ at \_\_\_\_\_ o'clock \_\_\_\_\_ M.

(Register of Deeds)

By \_\_\_\_\_ Deputy

A close-up photograph of a dark asphalt road surface. Two parallel yellow lines are painted on the left side of the frame. To the right of these lines, a small, circular, metallic object, likely a coin, lies on the pavement. The coin is positioned in the lower right quadrant of the image. In the bottom right corner, there is a red digital timestamp.

2002 8 6





2002 8 6





2002 8 6



2002 8 6