

CERTIFIED LAND CORNER RESTORATION

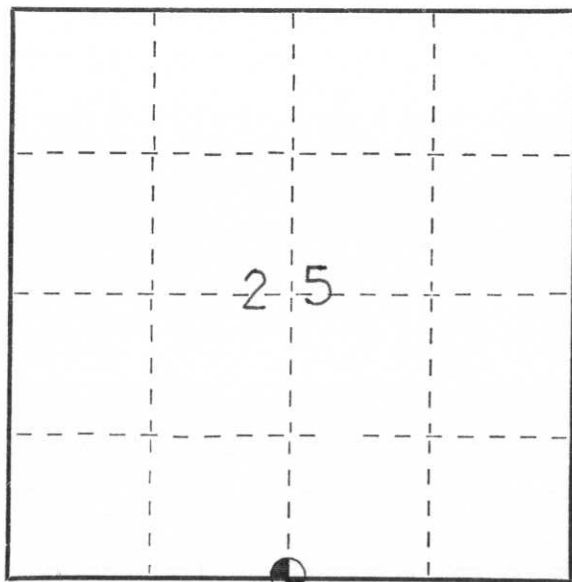
Index No. U-23

State of Wisconsin }
County of LINCOLN } ss.

I EDWIN R. ABENDROTH do hereby certify that on the 3RD day of MAY, 1978, I found evidence of the SOUTH 1/4 corner of SECTION 25 Township 32, North, Range 6 EAST, Fourth, Principal Meridian, as described hereon; and that from this evidence I established a new monument and accessories as described hereon to perpetuate the original location of this corner.

Resident witnesses:

SPOKE WITH SEVERAL AREA
RESIDENTS THEY HAD NO
KNOWLEDGE OF CORNER



○ = Corner monument restored.

History of original corner establishment:

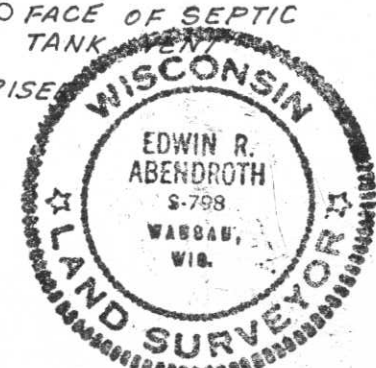
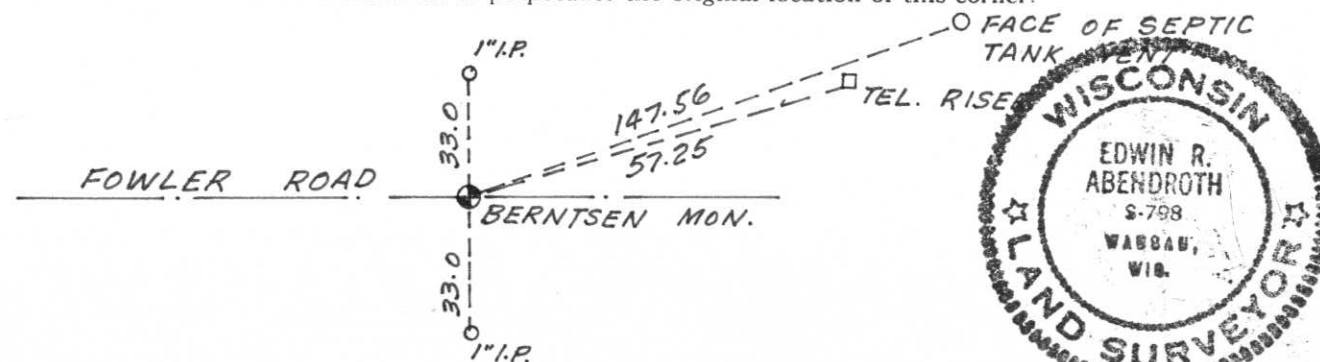
EAST RANDOM BETWEEN SECTIONS 25 & 36 80.40 CHAINS
WEST CORRECTED BETWEEN SECTIONS 25 & 36
40.20 CHS. SET 1/4 SECTION POST

BIRCH 9" S24°E 23 LKS.
HEMLOCH 9" N26°E 11 LKS

Description of corner evidence found:

EXCAVATED WITH BACKHOE 14' SQ HOLE TO ORIGINAL GROUND FOUND
NO EVIDENCE OF CORNER. SET BERNTSEN MONUMENT AT GOV'T. DISTANCE
IN ϕ OF ROADWAY.

Description of monument and accessories I established to perpetuate the original location of this corner.



Dated at WAUSAU, Wis., this 1ST day of JUNE, 1978.

Signature Edwin R. Abendroth Title R.L.S. Registration No. S-798
(County Surveyor, Registered Land Surveyor, or other duly authorized official)

Office of Register of Deeds, County of _____, I hereby certify that the within instrument was filed in this office for record on the _____ day of _____, 19____ at _____ o'clock _____ M.

(Register of Deeds)

By _____ Deputy



2002 8 6



2002 8 6



2002 8 6



2002 8 6