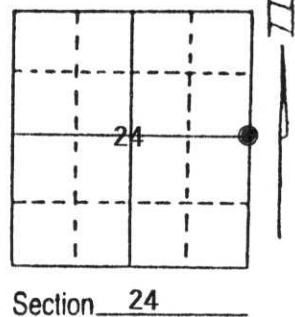


U.S. PUBLIC LAND SURVEY MONUMENT RECORD

Note: This form is intended and designed to fulfill all requirements of Wisconsin Administrative Code, Chapter A-E 5.02, U.S. Public Land Survey Monument Record (3) (a) (b) (c) (d) (e) (f) (g) (h) (i). An additional sheet may be added if necessary to conform with said requirements.

(a) Corner location: Township 32 North
 Range 6 East
 Town/City/Village TOWN OF MERRILL
 County LINCOLN



(b) (f) (g) (h) Description of monument found at this corner and if it was accepted, state all evidence (material, testimonial, occupational, plats, records, other monuments) used as a basis for accepting. If not accepted or if nothing was found, state evidence used as basis for establishing location. If reestablished through lost corner proportionate methods, indicate all monuments, distances and directions used to establish.

Original corner was wood post. Set in 1852 by Alber & Fredrick Ellis did not find any original information. Found $\frac{1}{2}$ " X 18" iron rod no other evidence found.

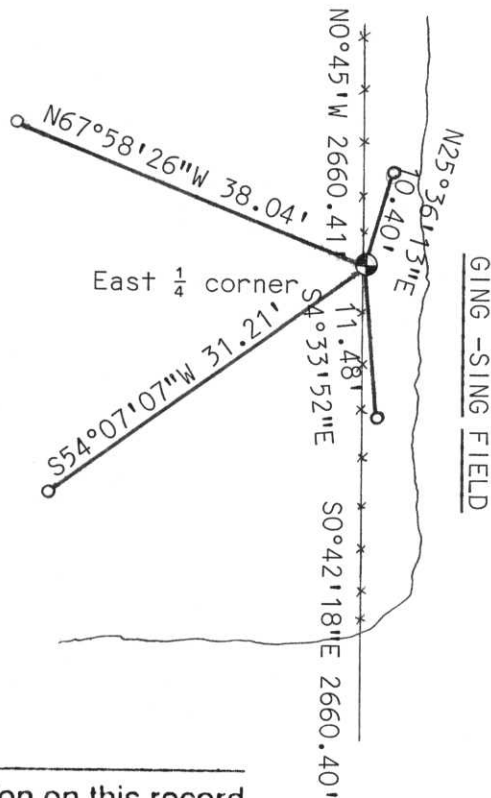
Included corner location in our Section traverse. Set corner on north-south fence line equi-distant between the NE and SE Section 24 corners.

Set standard Lincoln County berntsen monument and 4 $\frac{3}{4}$ " X 30" iron bar witness corners also set carsenite post at Section corner.

(c) (d) (e) Plan view of corner with ties to at least 4 witness monuments. If in disagreement with previously established corner, show the distances between the two corners and also indicate the ties to the disputed corner.



Set $\frac{3}{4}$ " iron bar with plastic cap.
 Set Berntsen monument Lincoln county standard monument.



RECEIVED AT LINCOLN COUNTY
 COURTHOUSE THIS 3rd DAY
 OF Aug 19 96
 TAX DESCRIPTION OFFICE

(i) I, Edwin R. Abendroth
 (type or print name) certify that the corner location on this record was determined by me or under my direction and control and that this U.S. Public Land Survey Monument Record is correct and complete to the best of my knowledge and belief.

Edwin R. Abendroth 8-6-96
 Signature Date

Index No. 0-25



2002 11 21

SMURVEY

2002 11 21



2002 11 21



2002 11 21