

CERTIFIED LAND CORNER RESTORATION

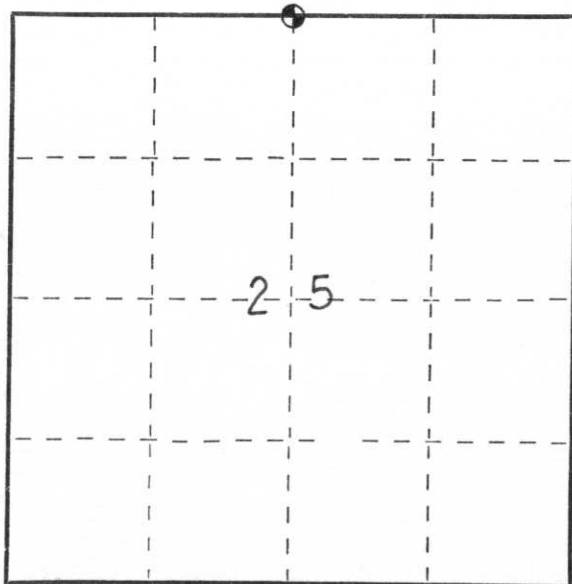
Index No. Q-23

State of Wisconsin }  
County of LINCOLN } ss.

I EDWIN R. ABENDROTH, do hereby certify that on the 3RD day of MAY, 1978, I found evidence of the NORTH 1/4 corner of SECTION 25 Township 32, North, Range 6 EAST, Fourth, Principal Meridian, as described hereon; and that from this evidence I established a new monument and accessories as described hereon to perpetuate the original location of this corner.

Resident witnesses:

SPOKE WITH AREA RESIDENTS  
THEY HAD NO KNOWLEDGE OF  
CORNER.



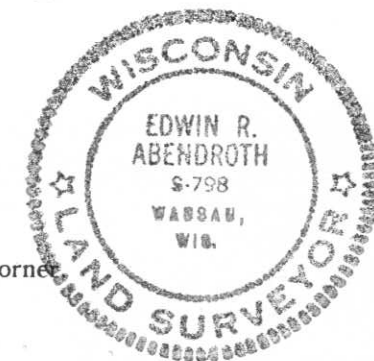
○ = Corner monument restored.

History of original corner establishment:

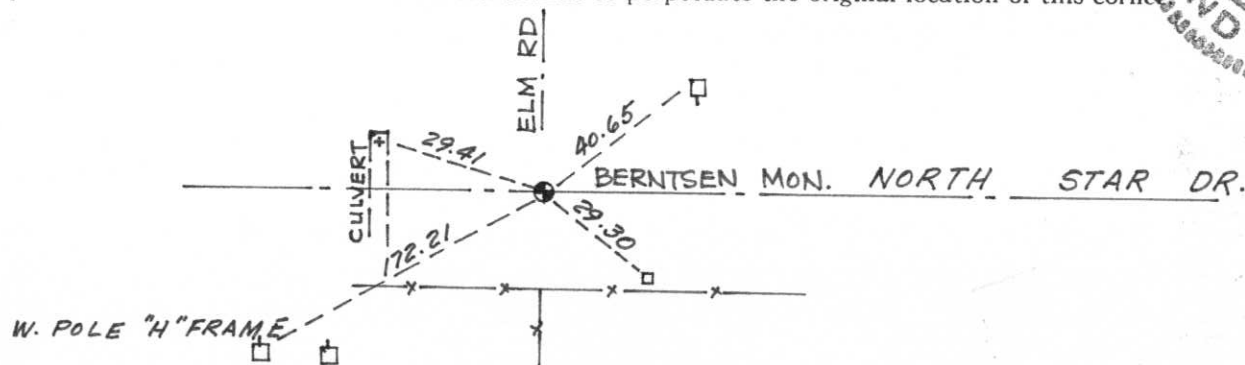
EAST RANDOM BETWEEN SECTIONS 24 & 25 80.86 CHS.  
WEST CORRECTED " " " "  
40.43 CHS. SET 1/4 SECTION POST ; BIRCH 12" S 69° W, 10 LKS.  
MAPLE 8" N 45° E, 18 LKS

Description of corner evidence found:

EXCAVATED 10' SQ HOLE 4' DEEP. FOUND NO EVIDENCE OF CORNER  
SET BERNTSEN MON. ON  $\Phi$  INTERSECTION AND FENCE LINE



Description of monument and accessories I established to perpetuate the original location of this corner:



Dated at WAUSAU, Wis., this 1ST day of JUNE, 1978.

Signature Edwin R. Abendroth Title R.L.S. Registration No. S-798  
(County Surveyor, Registered Land Surveyor, or other duly authorized official)

Office of Register of Deeds, County of \_\_\_\_\_, I hereby certify that the within instrument was filed in this office for record on the \_\_\_\_\_ day of \_\_\_\_\_, 19\_\_\_\_ at \_\_\_\_\_ o'clock \_\_\_\_\_ M.

(Register of Deeds)

By \_\_\_\_\_ Deputy

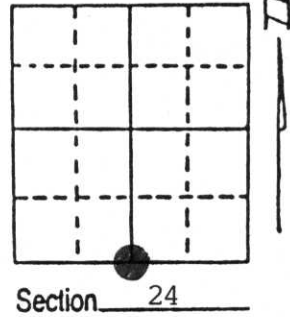
# U.S. PUBLIC LAND SURVEY MONUMENT RECORD

Note: This form is intended and designed to fulfill all requirements of Wisconsin Administrative Code, Chapter A-E 7.08 U.S. Public Land Survey Monument Record (3) (a) (b) (c) (d) (e) (f) (g) (h) (i). An additional sheet may be added if necessary to conform with said requirements.

(a) Corner location: Township 32 North  
 Range 6 East/West

Town/City/Village TN. OF MERRILL

County LINCOLN



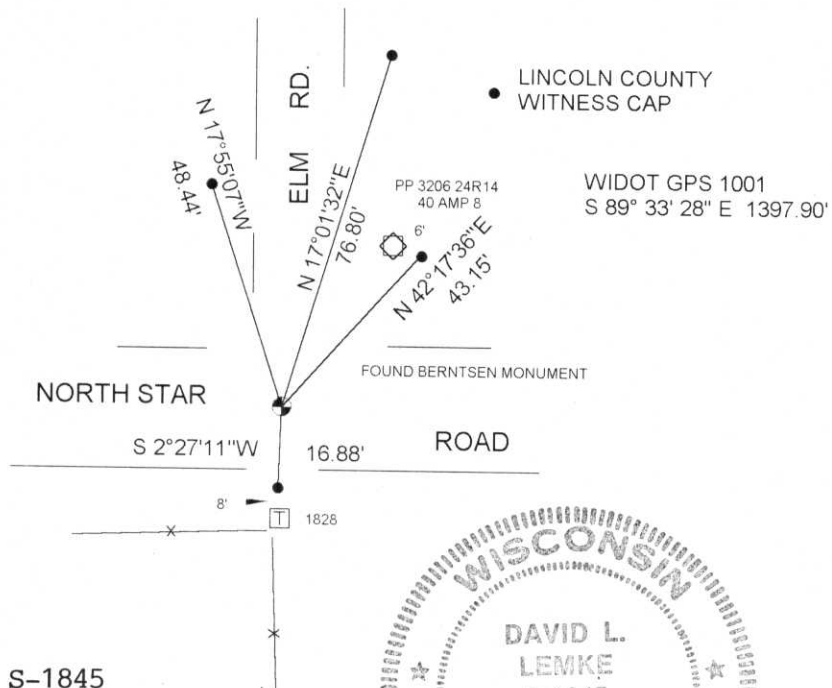
(b) (f) (g) (h) Description of monument found at this corner and if it was accepted, state all evidence (material, testimonial, occupational, plats, records, other monuments) used as a basis for accepting. If not accepted or if nothing was found, state evidence used as basis for establishing location. If reestablished through lost corner proportionate methods, indicate all monuments, distances and directions used to establish. Indicate type of monument found or set and sign post.

CORNER HISTORY ON FILE IN COUNTY SURVEYORS OFFICE

APRIL 1997 FOUND A BERNTSEN MONUMENT +/- 6" BELOW PVMT. C/L C/L INTERSECTION  
 ELM RD. & NORTH STAR RD. FOUND 1 EXISTING TIE IN PP TO THE NORTHEAST  
 OF CORNER LOCATION.

(c) (d) (e) Plan view of corner with ties to at least 4 witness monuments. If in disagreement with previously established corner, show the distances between the two corners and also indicate the ties to the disputed corner.

RECEIVED AT LINCOLN COUNTY  
 COURTHOUSE THIS 2nd DAY  
 OF June 19 97  
Pat Priske  
 TAX DESCRIPTION OFFICE



DAVID L. LEMKE S-1845



(i) I, David L. Lemke  
 (type or print name) certify that the corner location on this record  
 was determined by me or under my direction and control and that  
 this U.S. Public Land Survey Monument Record is correct and  
 complete to the best of my knowledge and belief.

Signature

Date

MAY 30 1997

Index No. Q-23