

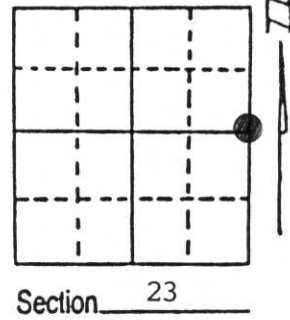
# U.S. PUBLIC LAND SURVEY MONUMENT RECORD

Note: This form is intended and designed to fulfill all requirements of Wisconsin Administrative Code, Chapter A-E 7.08 U.S. Public Land Survey Monument Record (3) (a) (b) (c) (d) (e) (f) (g) (h) (i). An additional sheet may be added if necessary to conform with said requirements.

(a) Corner location: Township 32 North  
 Range 6 East/West

Town/City/Village TN. OF MERRILL

County LINCOLN



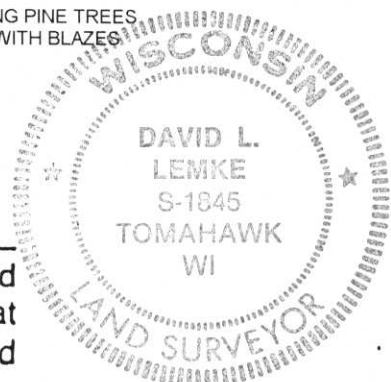
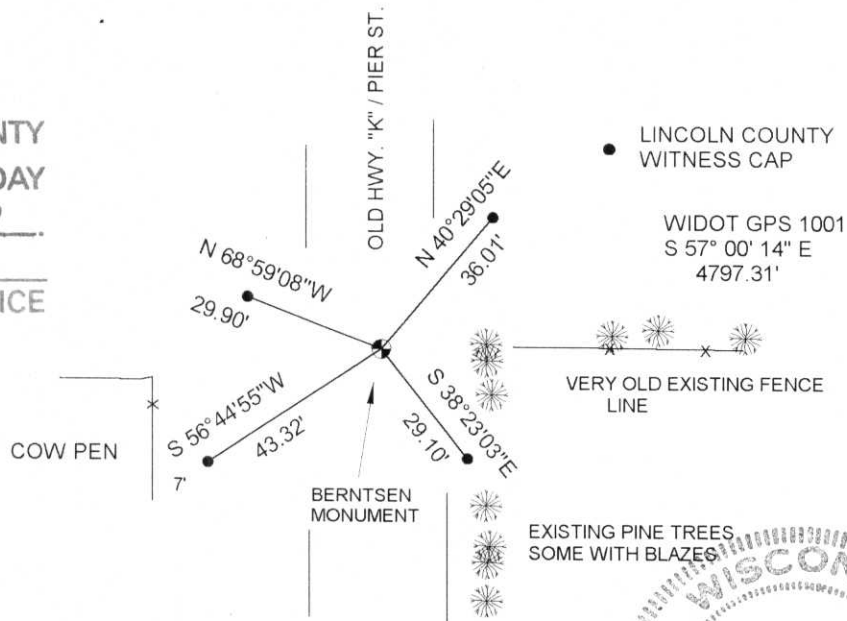
(b) (f) (g) (h) Description of monument found at this corner and if it was accepted, state all evidence (material, testimonial, occupational, plats, records, other monuments) used as a basis for accepting. If not accepted or if nothing was found, state evidence used as basis for establishing location. If reestablished through lost corner proportionate methods, indicate all monuments, distances and directions used to establish. Indicate type of monument found or set and sign post.

CORNER HISTORY ON FILE IN COUNTY SURVEYORS OFFICE

APRIL 1997 EXCAVATED ROAD AT INTERSECTION OF TREE & FENCE LINE RUNNING TO EAST. LOCAL RESIDENCE STATED CORNER WAS IN THIS AREA WHEN HE WAS A YOUNG MAN. FOUND BLAZES ON TREES ON EAST SIDE OF ROAD HOWEVER NO EVIDENCE OF CORNER REMAINED IN ROAD BED. SET BERNTSEN MONUMENT AT THIS LOCATION.

(c) (d) (e) Plan view of corner with ties to at least 4 witness monuments. If in disagreement with previously established corner, show the distances between the two corners and also indicate the ties to the disputed corner.

RECEIVED AT LINCOLN COUNTY  
 COURTHOUSE THIS 2nd DAY  
 OF June 19 97  
Pat Pribe  
 TAX DESCRIPTION OFFICE



DAVID L. LEMKE S-1845

(i) I, \_\_\_\_\_  
 (type or print name) certify that the corner location on this record was determined by me or under my direction and control and that this U.S. Public Land Survey Monument Record is correct and complete to the best of my knowledge and belief.

MAY 30 1997

Signature

Date

Index No. 0-21