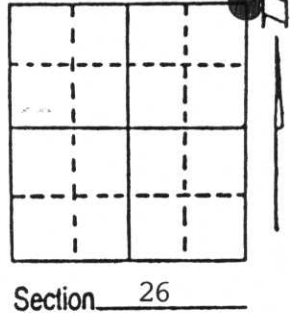


U.S. PUBLIC LAND SURVEY MONUMENT RECORD

Note: This form is intended and designed to fulfill all requirements of Wisconsin Administrative Code, Chapter A-E 7.08 U.S. Public Land Survey Monument Record (3) (a) (b) (c) (d) (e) (f) (g) (h) (i). An additional sheet may be added if necessary to conform with said requirements.

(a) Corner location: Township 32 North
 Range 6 East/West

Town/City/Village TN. OF MERRILL
 County LINCOLN



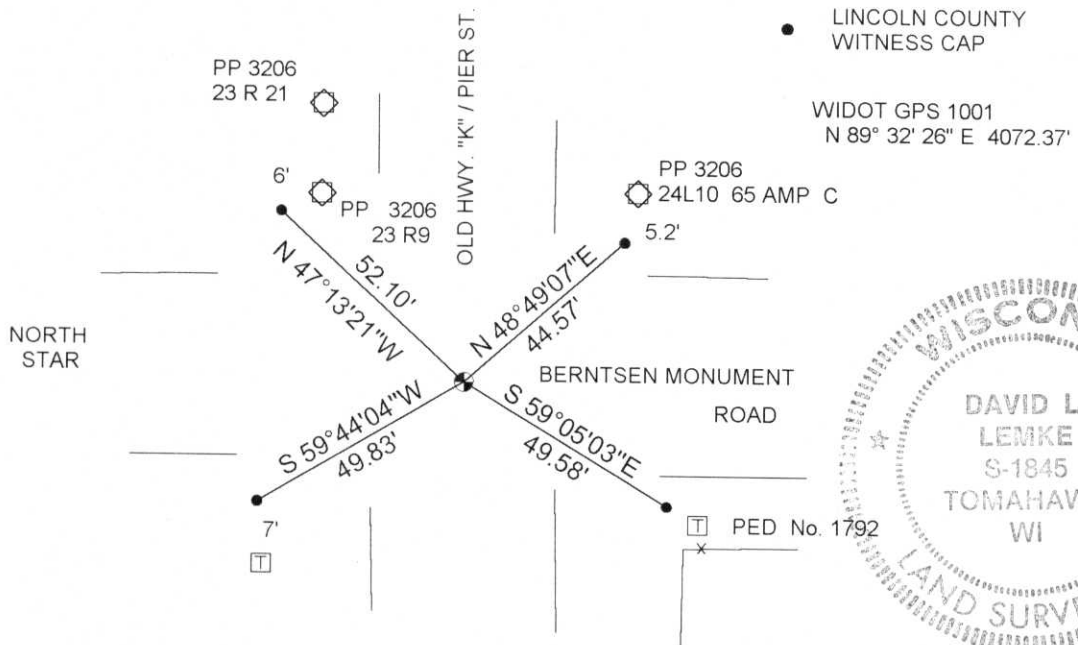
(b) (f) (g) (h) Description of monument found at this corner and if it was accepted, state all evidence (material, testimonial, occupational, plats, records, other monuments) used as a basis for accepting. If not accepted or if nothing was found, state evidence used as basis for establishing location. If reestablished through lost corner proportionate methods, indicate all monuments, distances and directions used to establish. Indicate type of monument found or set and sign post.

CORNER HISTORY ON FILE LINCOLN COUNTY SURVEYORS OFFICE

APRIL 1997

EXCAVATED INTERSECTION OF NORTH STAR ROAD & PIER ST. FOUND NO EVIDENCE OF CORNER. SET BERNTSEN MONUMENT AT INTERSECTION OF CENTER LINES AS LOCAL RESIDENTS REMEMBERED IT TO BE THE CORRECT LOCATION.

(c) (d) (e) Plan view of corner with ties to at least 4 witness monuments. If in disagreement with previously established corner, show the distances between the two corners and also indicate the ties to the disputed corner.



DAVID L. LEMKE S-1845

(i) I, _____
 (type or print name) certify that the corner location on this record was determined by me or under my direction and control and that this U.S. Public Land Survey Monument Record is correct and complete to the best of my knowledge and belief.

Signature

Date

MAY 30 1997

RECEIVED AT LINCOLN COUNTY COURTHOUSE THIS 2nd DAY OF June 1997
 OF Pat Priebe
 TAX DESCRIPTION OFFICE

Index No. Q-21