

U.S. PUBLIC LAND SURVEY MONUMENT RECORD

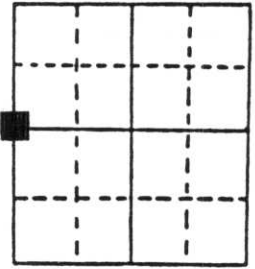
Note: This form is intended and designed to fulfill all requirements of Wisconsin Administrative Code, Chapter A-E 7.08 U.S. Public Land Survey Monument Record (3) (a) (b) (c) (d) (e) (f) (g) (h) (i). An additional sheet may be added if necessary to conform with said requirements.

(a) Corner location: Township 32 North

Range 6 East/West

Town/ ~~_____~~ Rock Falls

County Lincoln

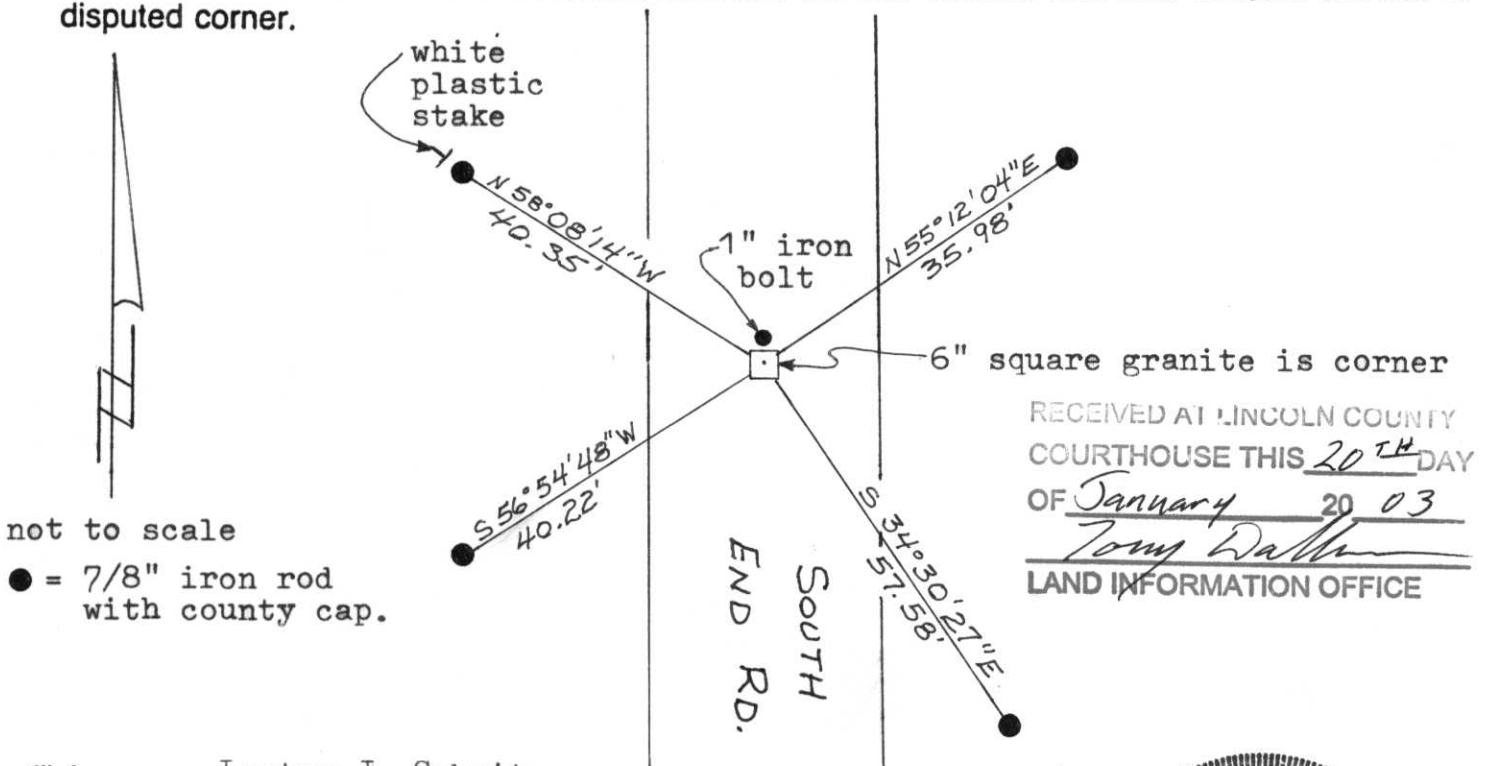


Section 17

(b) (f) (g) (h) Description of monument found at this corner and if it was accepted, state all evidence (material, testimonial, occupational, plats, records, other monuments) used as a basis for accepting. If not accepted or if nothing was found, state evidence used as basis for establishing location. If reestablished through lost corner proportionate methods, indicate all monuments, distances and directions used to establish. Indicate type of monument found or set and sign post.

Original Gov't. Survey: Apr. 1852 by A. G. & F. S. Ellis, set wood post for corner with bearings, hemlock 16 S 22° W 24 links and hemlock 8 N 60° E 33 links. On a survey of the town of Rock Falls by Francis Fox map dated 1943, he set a stone for the corner & offset iron west 24.75'. Using a backhoe operated by Jerrald Laak, found a 6" square granite, 8" below surface of road. I set a 1" iron bolt 0.5' north of the centre of the granite for location purposes. Did not find the offset iron west as it had been ditched since being set by Fox. I witnessed the granite corner as shown below.

(c) (d) (e) Plan view of corner with ties to at least 4 witness monuments. If in disagreement with previously established corner, show the distances between the two corners and also indicate the ties to the disputed corner.



RECEIVED AT LINCOLN COUNTY
COURTHOUSE THIS 20TH DAY
OF January 20 03
Tom Dallen
LAND INFORMATION OFFICE

(i) I, Lester J. Schmit
(type or print name) certify that the corner location on this record was determined by me or under my direction and control and that this U.S. Public Land Survey Monument Record is correct and complete to the best of my knowledge and belief.

Lester J. Schmit
Signature

16 Jan 03
Date



Stamp

Index No. K-5

1817







