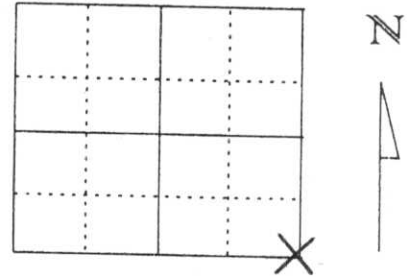


U.S. PUBLIC LAND SURVEY MONUMENT RECORD

Note: This form is intended and designed to fulfill all requirements of Wisconsin Administrative Code, Chapter A-E 5.02, U.S. Public Land Survey Monument Record (3) (a) (b) (c) (d) (e) (f) (g) (h) (i). An additional sheet may be added if necessary to conform with said requirements.

(a) Corner location: Township 32 North
 Range 6 East
 Town/City/Village ROCK FALLS
 County Lincoln



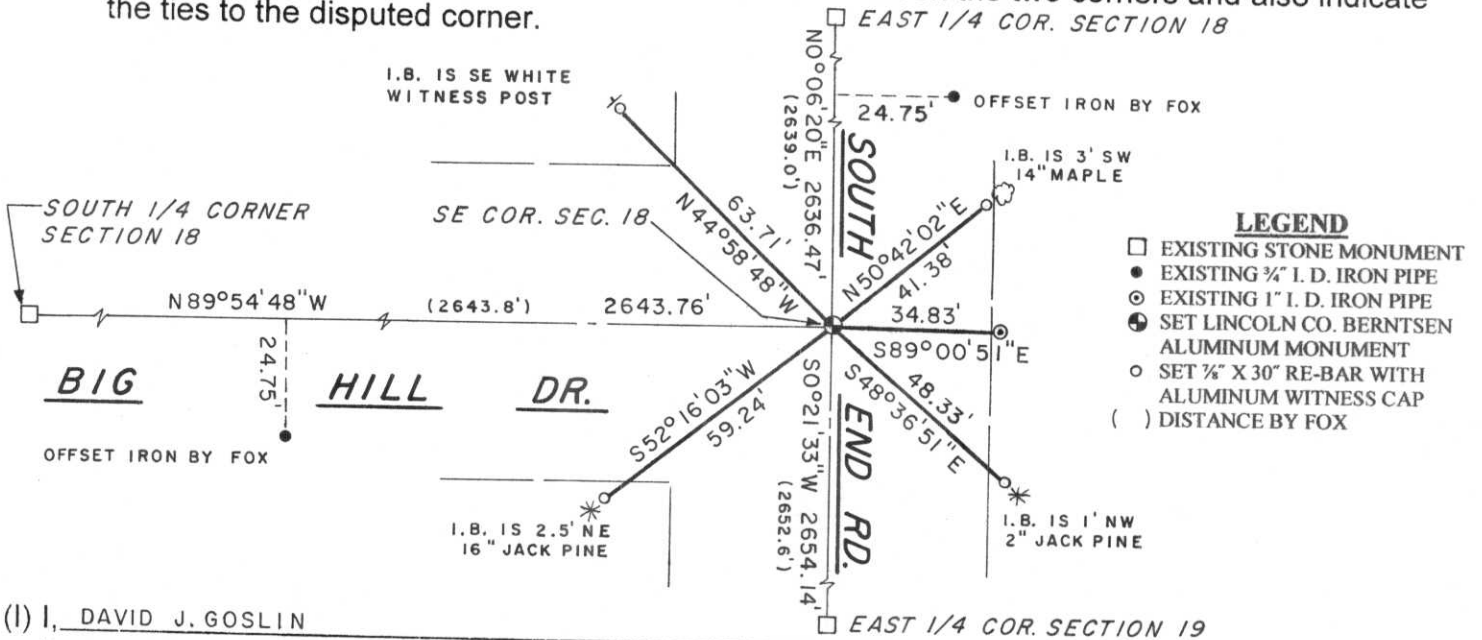
Section 18

(b) (f) (g) (h) Description of monument found at this corner and if it was accepted, state all evidence (material, testimonial, occupational, plats, records, other monuments) used as a basis for accepting. If not accepted or if nothing was found, state evidence used as basis for establishing location. If reestablished through lost corner proportionate methods, indicate all monuments, distances and directions used to establish.

IN APRIL OF 1852 A. G. ELLIS AND F. S. ELLIS SET POST FOR SOUTHEAST CORNER WITH THE FOLLOWING TIES: BIRCH 10 S15°W 46 LINKS, BIRCH 12 S39°E 50 LINKS. IN 1943 FRANCIS FOX SET A STONE MONUMENT AT INTERSECTION OF ROADS ONE FOOT BELOW TOP OF ROAD FOR THE SOUTHEAST CORNER. ALSO FOX SET OFFSET IRON EAST 24.75 FEET. WE HAD LINCOLN COUNTY HIGHWAY DEPARTMENT DIG AT CORNER LOCATION BUT DID NOT FIND STONE MONUMENT OR OFFSET IRON EAST. SET LINCOLN COUNTY BERNTSEN MONUMENT FOR SOUTHEAST CORNER BASED ON FOX'S NOTES AS SHOWN BELOW. TIED CORNER OUT AS SHOWN BELOW.

RECEIVED BY LINCOLN COUNTY
 SURVEYOR THIS 15TH DAY
 OF February 20 06
Tony Dahn
 COUNTY SURVEYOR

(c) (d) (e) Plan view of corner with ties to at least 4 witness monuments. If in disagreement with previously established corner, show the distances between the two corners and also indicate the ties to the disputed corner.



(I) I, DAVID J. GOSLIN
 (type or print name) certify that the corner location on this record was determined by me or under my direction and control and that this U.S. Public Land Survey Monument Record is correct and complete to the best of my knowledge and belief.

David J. Goslin
 Signature



1-10-06
 Date

Index No. M-5









