

U.S. PUBLIC LAND SURVEY MONUMENT RECORD

NOTE: THIS FORM IS INTENDED AND DESIGNED TO FULFILL ALL REQUIREMENTS OF WISCONSIN ADMINISTRATIVE CODE, CHAPTER A-E 7.08, U.S. PUBLIC LAND SURVEY MONUMENT RECORD (3)(a)(b)(c)(d)(e)(f)(g)(h)(i). ADDITIONAL SHEETS MAY BE NECESSARY TO CONFORM TO SAID REQUIREMENTS.

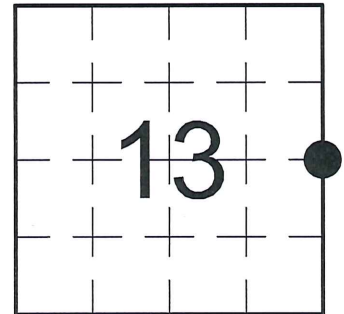
T 32 N, R 6 E

(a) CORNER LOCATION:

EAST QUARTER CORNER, SECTION 13
 TOWNSHIP 32 NORTH
 RANGE 6 EAST
 TOWN OF MERRILL
 LINCOLN COUNTY
 WISCONSIN

(b) HISTORY OF ORIGINAL CORNER:

ORIGINAL SURVEYOR: James M. Marsh; Set post
 COMMENCING DATE: July 8, 1851
 COMPLETION DATE: July 28, 1851
 ORIGINAL BEARING TREES:
 8" Birch; S 3° E; 13 links
 8" Birch; S 60° W; 38 links
 7" Birch; N 59° W; 25 links
 10" Hemlock; N 86° E; 25 links

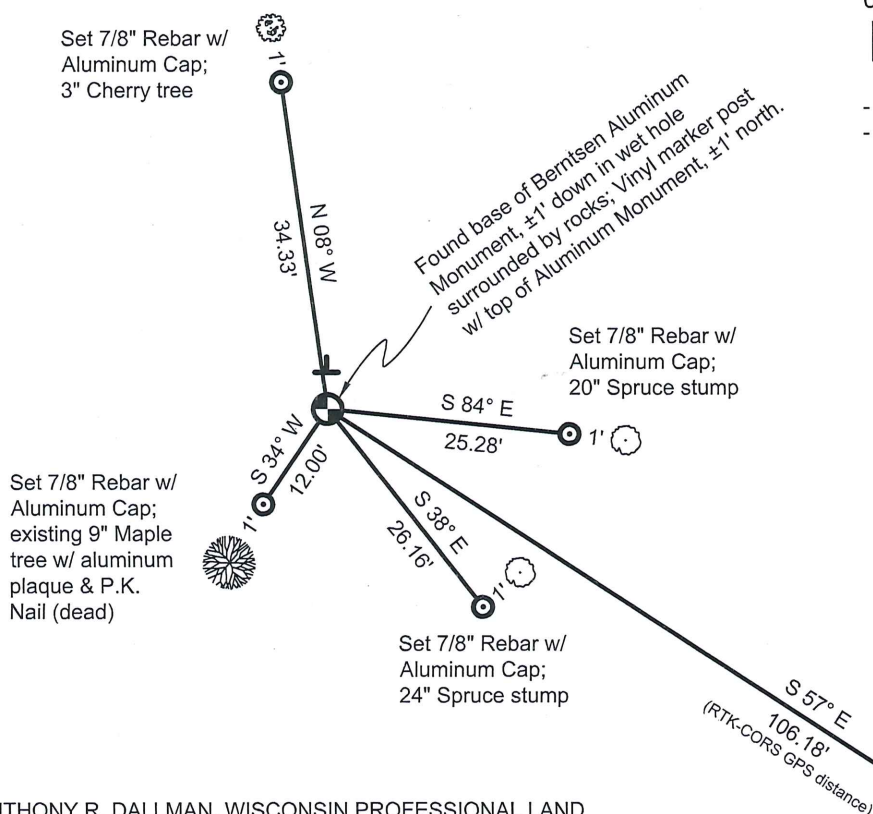


(f)(g)(h) DESCRIPTION OF MONUMENT FOUND AT THIS CORNER AND IF IT WAS ACCEPTED. STATE ALL EVIDENCE (MATERIAL, TESTIMONIAL, OCCUPATIONAL, PLATS, RECORDS, OTHER MONUMENTS) USED AS A BASIS FOR ESTABLISHING LOCATION. IF RE-ESTABLISHING THROUGH LOST CORNER PROPORTIONATE METHODS, INDICATE ALL MONUMENTS, DISTANCES, AND DIRECTIONS USED TO ESTABLISH. INDICATE TYPE OF MONUMENTS FOUND OR SET.

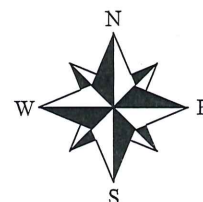
06/19/1991 - G. Krueger, PLS-1619, after searching area with metal detector and finding nothing, tied fences and into existing traverse of Section 13 and determined that a straight line at a split distance from the NE corner to the SE corner to be the best evidence for setting the East 1/4 Corner. He set a Berntsen Aluminum Monument and reference ties to perpetuate the corner location.

06/23/2015 - I, Anthony R. Dallman, PLS-2405, found the bottom portion of the existing Berntsen Aluminum Monument intact, ±12" down in a wet hole, surrounded by rocks. The top portion was found near the existing SE iron bar reference tie by the adjacent land owner and pointed out to me. I accept the Aluminum Monument base as being in the same location as set by Krueger in 1991. All but one tie has been destroyed and the one remaining tie is on a dead maple tree. I left the Aluminum Monument base in place and set new reference ties to further perpetuate the corner location, as shown in the sketch below.

(c)(d)(e) PLAN VIEW OF THE CORNER WITH TIES TO AT LEAST FOUR WITNESSES. IF IN DISAGREEMENT WITH PREVIOUSLY ESTABLISHED CORNER, SHOW THE DISTANCES BETWEEN THE TWO CORNERS AND ALSO THE TIES TO THE DISPUTED CORNER.



- Tie bearings by hand-held compass.
 - Tie distances by steel tape, unless noted.



I, ANTHONY R. DALLMAN, WISCONSIN PROFESSIONAL LAND SURVEYOR, S-2405, HEREBY CERTIFY THAT THE CORNER LOCATION ON THIS RECORD WAS REFERENCED BY ME OR UNDER MY DIRECTION AND CONTROL AND THAT THIS U.S. PUBLIC LAND SURVEY MONUMENT RECORD IS COMPLETE TO THE BEST OF MY KNOWLEDGE AND BELIEF.

Anthony R. Dallman 6/24/15
 ANTHONY R. DALLMAN, PLS S-2405



Found 1-3/16 Iron Bar (Krueger, 1991) in a wet swampy area; slight lean NW

INDEX NO. K-25

U.S. PUBLIC LAND SURVEY MONUMENT RECORD

Note: This form is intended and designed to fulfill all requirements of Wisconsin Administrative Code, Chapter A-E 5.02, U.S. Public Land Survey Monument Record (3) (a) (b) (c) (d) (e) (f) (g) (h) (i). An additional sheet may be added if necessary to conform with said requirements.

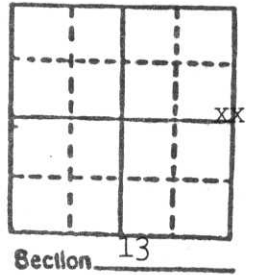
(a) Corner location: Township 32 North

Range 6 East

Town Merrill

County Lincoln

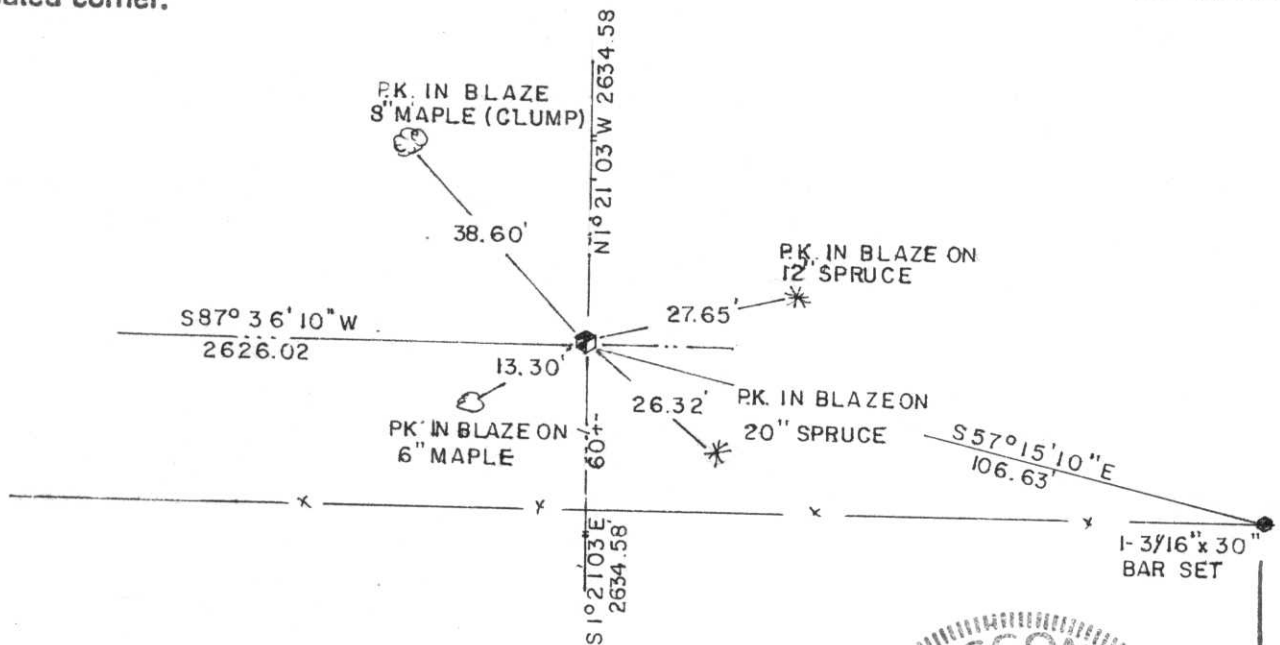
East 1/4 Cor.
Sec. 13



b) (f) (g) (h) Description of monument found at this corner and if it was accepted, state all evidence (material, testimonial, occupational, plats, records, other monuments) used as a basis for accepting. If not accepted or if nothing was found, state evidence used as basis for establishing location. If reestablished through lost corner proportionate methods, indicate all monuments, distances and directions used to establish.

After searching area with metal detector and finding nothing; We tied fences and into extensive traverse of Section 13 and determined that a straight line at a split distance from the NE corner to the SE corner to be the best evidence for setting the East 1/4 corner. We set a Berntsen Monument and tied out.

c) (d) (e) Plan view of corner with ties to at least 4 witness monuments. If in disagreement with previously established corner, show the distances between the two corners and also indicate the ties to the disputed corner.



(i) I, Gary R. Krueger RLS NO.1619
(Type or print name) certify that the corner location on this record was determined by me or under my direction and control and that this U.S. Public Land Survey Monument Record is correct and complete to the best of my knowledge and belief.

Gary R. Krueger Signature 6-19-91 Date



Index No. K-25

RECEIVED JUN 25 1991



10 2:28 PM



10 2:29 PM



10 2:28 PM



10 2:30 PM