

U.S. PUBLIC LAND SURVEY MONUMENT RECORD

NOTE: THIS FORM IS INTENDED AND DESIGNED TO FULFILL ALL REQUIREMENTS OF WISCONSIN ADMINISTRATIVE CODE, CHAPTER A-E 7.08, U.S. PUBLIC LAND SURVEY MONUMENT RECORD (3)(a)(b)(c)(d)(e)(f)(g)(h)(i). ADDITIONAL SHEETS MAY BE NECESSARY TO CONFORM TO SAID REQUIREMENTS.

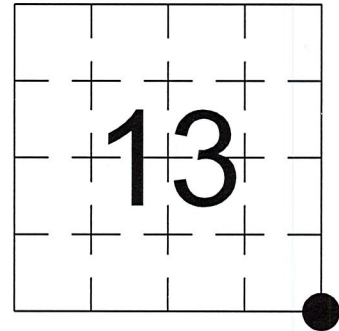
T 32 N, R 6 E

(a) CORNER LOCATION:

SOUTHEAST CORNER, SECTION 13
 TOWNSHIP 32 NORTH
 RANGE 6 EAST
 TOWN OF MERRILL
 LINCOLN COUNTY
 WISCONSIN

(b) HISTORY OF ORIGINAL CORNER:

ORIGINAL SURVEYOR: James M. Marsh, Set Post
 COMMENCING DATE: July 8, 1851
 COMPLETION DATE: July 28, 1851
 ORIGINAL BEARING TREES:
 14" Cedar; S 61° E; 23 links
 8" Cedar; S 46° W; 6 links
 8" Birch; N 55° W; 4 links
 10" Cedar; N 50° E; 7 links



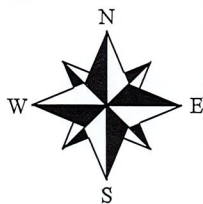
(f)(g)(h) DESCRIPTION OF MONUMENT FOUND AT THIS CORNER AND IF IT WAS ACCEPTED. STATE ALL EVIDENCE (MATERIAL, TESTIMONIAL, OCCUPATIONAL, PLATS, RECORDS, OTHER MONUMENTS) USED AS A BASIS FOR ESTABLISHING LOCATION. IF RE-ESTABLISHING THROUGH LOST CORNER PROPORTIONATE METHODS, INDICATE ALL MONUMENTS, DISTANCES, AND DIRECTIONS USED TO ESTABLISH. INDICATE TYPE OF MONUMENTS FOUND OR SET.

1991, Gary R. Krueger found and accepted a 1 1/2" Iron Pipe. Found Iron Pipe was replaced with a 1 3/16" solid Iron Bar and witnessed as shown on his Survey Monument Record.

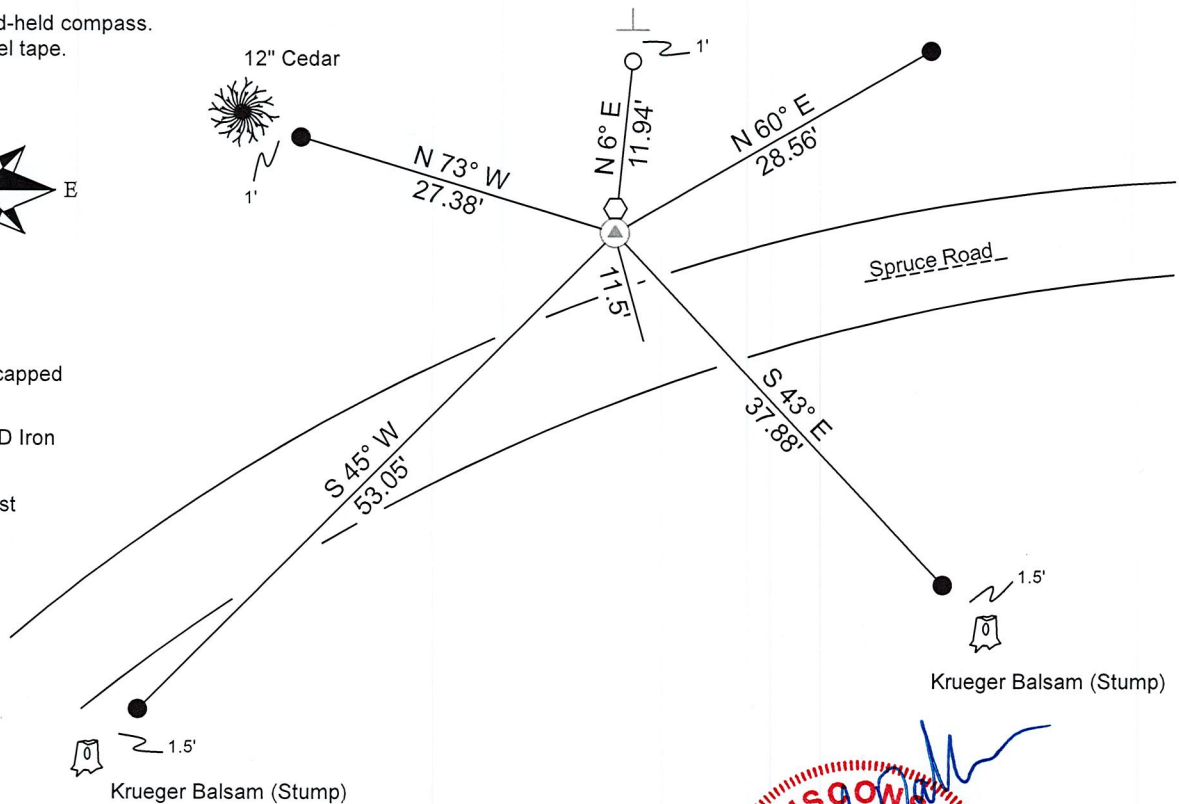
5/23/2023, I, Anthony R. Dallman, PLS-2405, found a 1 3/16" Hex Rod that disagreed with existing GPS Coordinates. Upon a further search, I was able to find 2 stumps remaining of Krueger's witness trees that agreed with the existing GPS Coordinate position. I accepted the Coordinate position and set a 30" Driveable Berntsen Swamp Rod, removed the Hex Rod and set it at the North edge of the Berntsen. My search also uncovered 4 rebar witness monuments, as shown in the sketch below, to further perpetuate the corner location.

(c)(d)(e) PLAN VIEW OF THE CORNER WITH TIES TO AT LEAST FOUR WITNESSES. IF IN DISAGREEMENT WITH PREVIOUSLY ESTABLISHED CORNER, SHOW THE DISTANCES BETWEEN THE TWO CORNERS AND ALSO THE TIES TO THE DISPUTED CORNER.

- Tie bearings by hand-held compass.
- Tie distances by steel tape.
- Not to scale.



- - Found 7/8" capped Rebar
- - Found 1" O.D Iron Pipe
- ⊥ - Set Vinyl Post



I, ANTHONY R. DALLMAN, WISCONSIN PROFESSIONAL LAND SURVEYOR, S-2405, HEREBY CERTIFY THAT THE CORNER LOCATION ON THIS RECORD WAS REFERENCED BY ME OR UNDER MY DIRECTION AND CONTROL AND THAT THIS U.S. PUBLIC LAND SURVEY MONUMENT RECORD IS COMPLETE TO THE BEST OF MY KNOWLEDGE AND BELIEF.

Anthony R. Dallman 7/19/23
 ANTHONY R. DALLMAN, PLS S-2405



INDEX NO. M-25

43206130000

43206130000_Mon-N



43206130000_North



43206130000_West



43206130000_South



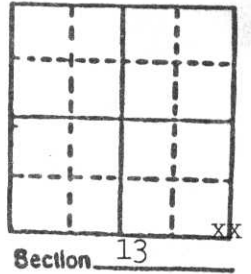
43206130000_East



U.S. PUBLIC LAND SURVEY MONUMENT RECORD

Note: This form is intended and designed to fulfill all requirements of Wisconsin Administrative Code, Chapter A-E 5.02, U.S. Public Land Survey Monument Record (3) (a) (b) (c) (d) (e) (f) (g) (h) (i). An additional sheet may be added if necessary to conform with said requirements.

(a) Corner location: Township 32 North
 Range 6 East



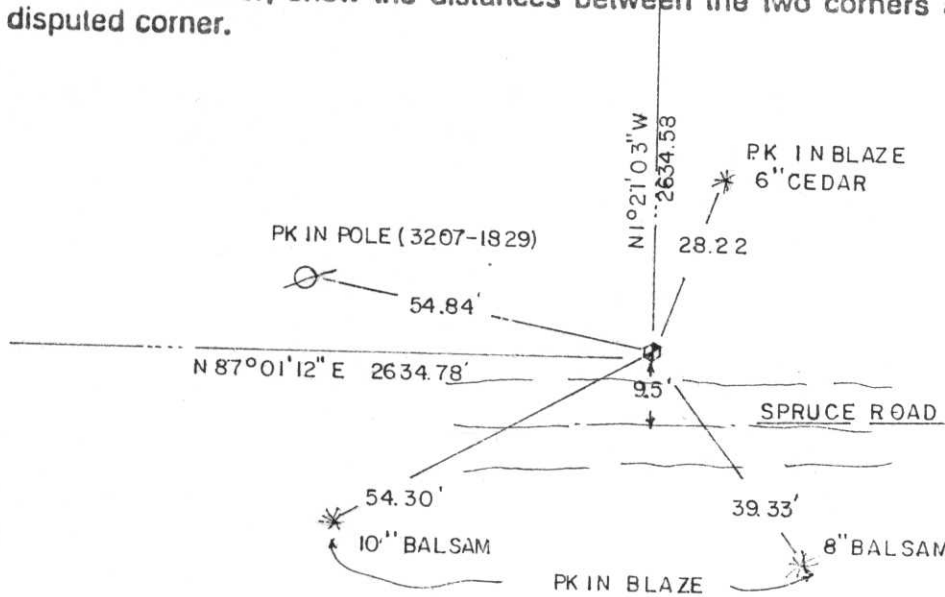
Town Merrill
 County Lincoln

SE Cor.
 Sec. 13

b) (f) (g) (h) Description of monument found at this corner and if it was accepted, state all evidence (material, testimonial, occupational, plats, records, other monuments) used as a basis for accepting. If not accepted or if nothing was found, state evidence used as basis for establishing location. If reestablished through lost corner proportionate methods, indicate all monuments, distances and directions used to establish.

Found a 1½" iron pipe below the road shoulder with metal detector. Accepted as corner after tying it into an extensive traverse of Section 13. Replace with a 1 3/16" x 30" solid iron bar and tied out as shown below.

c) (d) (e) Plan view of corner with ties to at least 4 witness monuments. If in disagreement with previously established corner, show the distances between the two corners and also indicate the ties to the disputed corner.



(i) I, Gary R. Krueger RLS NO.1619
 (type or print name) certify that the corner location on this record was determined by me or under my direction and control and that this U.S. Public Land Survey Monument Record is correct and complete to the best of my knowledge and belief.

Gary R. Krueger Signature 6-19-91 Date



Index No. M-25

RECEIVED JUN 25 1991



2002 11 21



2002 11 21



2002 11 21