



# U.S. PUBLIC LAND SURVEY MONUMENT RECORD

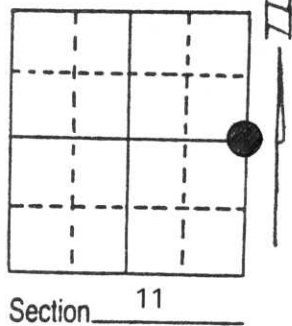
Note: This form is intended and designed to fulfill all requirements of Wisconsin Administrative Code, Chapter A-E 5.02, U.S. Public Land Survey Monument Record (3) (a) (b) (c) (d) (e) (f) (g) (h) (i). An additional sheet may be added if necessary to conform with said requirements.

(a) Corner location: Township 32 North

Range 6 East

Town/City/Village TN. OF MERRILL

County LINCOLN



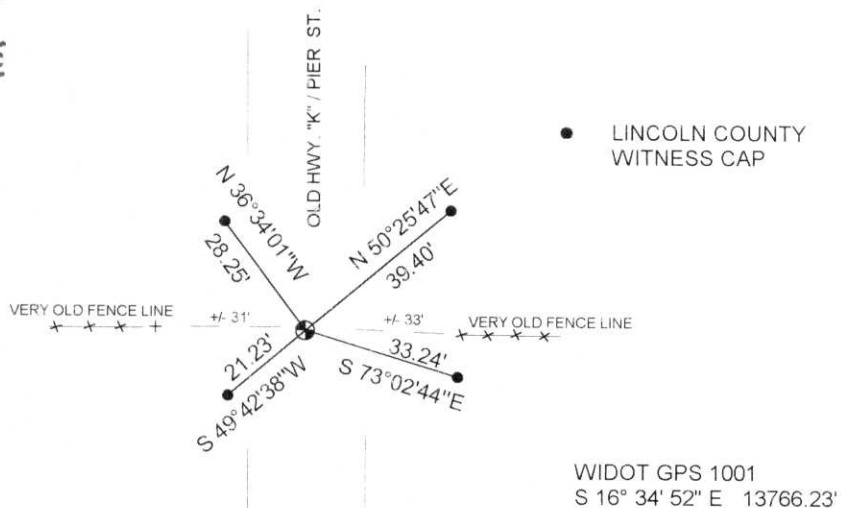
(b) (f) (g) (h) Description of monument found at this corner and if it was accepted, state all evidence (material, testimonial, occupational, plats, records, other monuments) used as a basis for accepting. If not accepted or if nothing was found, state evidence used as basis for establishing location. If reestablished through lost corner proportionate methods, indicate all monuments, distances and directions used to establish.

CORNER HISTORY ON FILE IN COUNTY SURVEYORS OFFICE

APRIL 1997 EXCAVATED ROAD AT IT'S INTERSECTION WITH A FENCE LINE RUNNING EAST AND WEST. LOCAL RESIDENCES STATE THE CORNER FALLS IN THIS AREA. FOUND NO EVIDENCE OF CORNER LOCATION. SET BERNTSEN MONUMENT IN CENTER OF ROAD AT IT'S INTERSECTION WITH THE FENCE LINES.

(c) (d) (e) Plan view of corner with ties to at least 4 witness monuments. If in disagreement with previously established corner, show the distances between the two corners and also indicate the ties to the disputed corner.

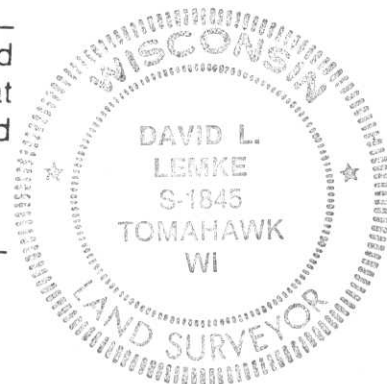
RECEIVED AT LINCOLN COUNTY  
COURTHOUSE THIS 2nd DAY  
OF June 1997  
Pat Priebe  
TAX DESCRIPTION OFFICE



(i) I, DAVID L. LEMKE S-1845  
(type or print name) certify that the corner location on this record was determined by me or under my direction and control and that this U.S. Public Land Survey Monument Record is correct and complete to the best of my knowledge and belief.

Signature

MAY 30 1997  
Date



Index No. G-21