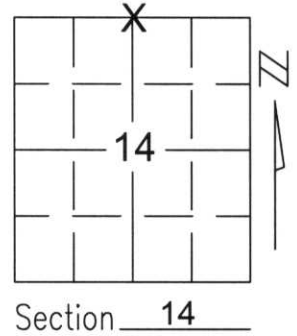


U.S. PUBLIC LAND SURVEY MONUMENT RECORD

Note: This form is intended and designed to fulfill all requirements of Wisconsin Administrative Code, Chapter A-E 5.02, U.S. Public Land Survey Monument Record (3)(a)(b)(c)(d)(e)(f)(g)(h)(i). An additional sheet may be added if necessary to conform with said requirements.

(a) Corner location: Township 32 North
 Range 6 East
 Town/City/Village MERRILL
 County LINCOLN



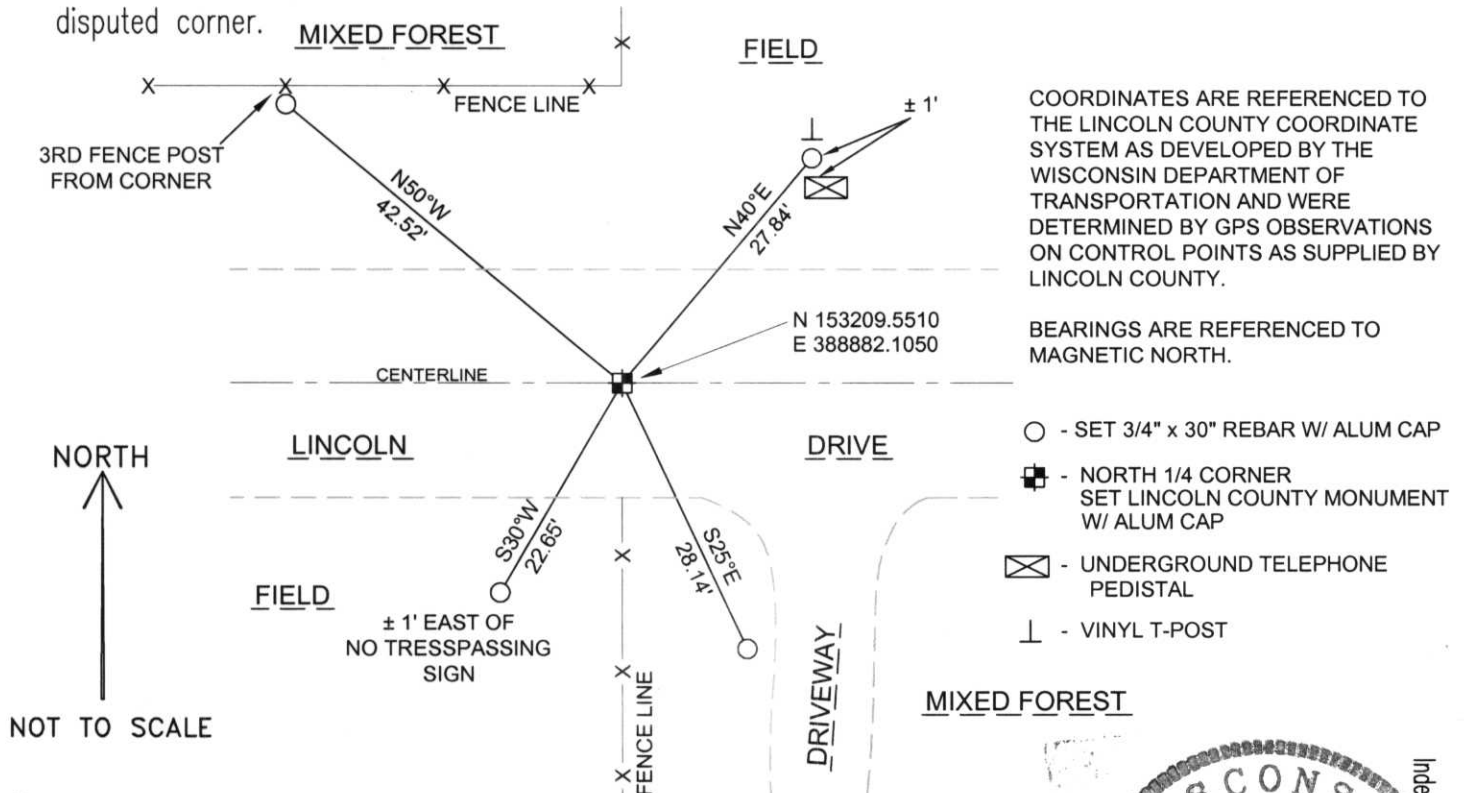
Section 14

(b)(f)(g)(h) Description of monument found at this corner and if it was accepted, state all evidence (material, testimonial, occupational, plats, records, other monuments) used as a basis for accepting. If not accepted or if nothing was found, state evidence used as basis for establishing location. If reestablished through lost corner proportionate methods, indicate all monuments, distances and directions used to establish.

DUG FOR NORTH 1/4 CORNER, ±5' BELOW GRADE AND FOUND NOTHING. USED SECTION SUMMARY FROM MINK CAPITAL SURVEYING INC. COMPLETED IN JUNE OF 1973 TO ESTABLISH CORNER LOCATION.
 SET A BERNTSEN MONUMENT AND SET TIES TO PERPETUATE CORNER LOCATION.

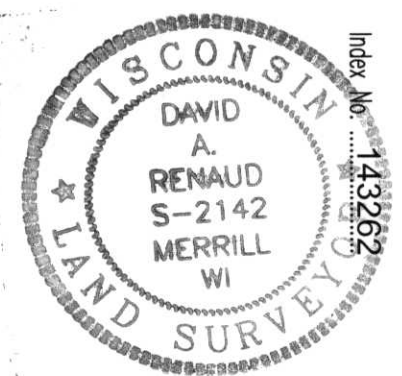
RECEIVED AT LINCOLN COUNTY
 COURTHOUSE THIS 3RD DAY
 OF December 20 02
Tony Daller
 LAND INFORMATION OFFICE

(c)(d)(e) Plan view of corner with ties to at least 4 witness monuments. If in disagreement with previously established corner, show the distances between the two corners and also indicate the ties to the disputed corner.



(i) I, David A. Renaud, RLS certify that the corner location on this record was determined by me or under my direction and control and that this U.S. Public Land Survey Monument Record is correct and complete to the best of my knowledge and belief.

David Renaud 11-29-02
 Signature Date



I-19

143262

