

Attachment to Tie Sheet I-21, T32N, R6E

43206110000

I visited the corner on 4/25/2019 to verify the corner and reference tie monumentation before County Road work. I found the Berntsen Monument (corroded) set by Robert Winat (1972), and all 4 ties from the LaVerne Mosher tie sheet (8/02/1991) and verified by David Lemke (5/30/1997). The established Coordinates and 3 ties agree with existing monument.

Northeasterly witness was found bent and leaning, straightened iron and reset at record distance, 79.94'.

 8/14/19

Anthony R. Dallman, PLS-2405

Lincoln County Surveyor



U.S. PUBLIC LAND SURVEY MONUMENT RECORD

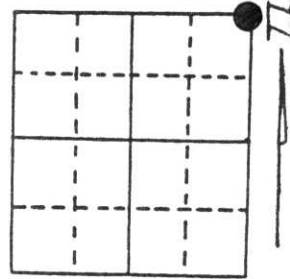
Note: This form is intended and designed to fulfill all requirements of Wisconsin Administrative Code, Chapter A-E 5.02, U.S. Public Land Survey Monument Record (3) (a) (b) (c) (d) (e) (f) (g) (h) (i). An additional sheet may be added if necessary to conform with said requirements.

(a) Corner location: Township 32 North

Range 6 East

Town/City/Village TN. OF MERRILL

County LINCOLN



Section 14

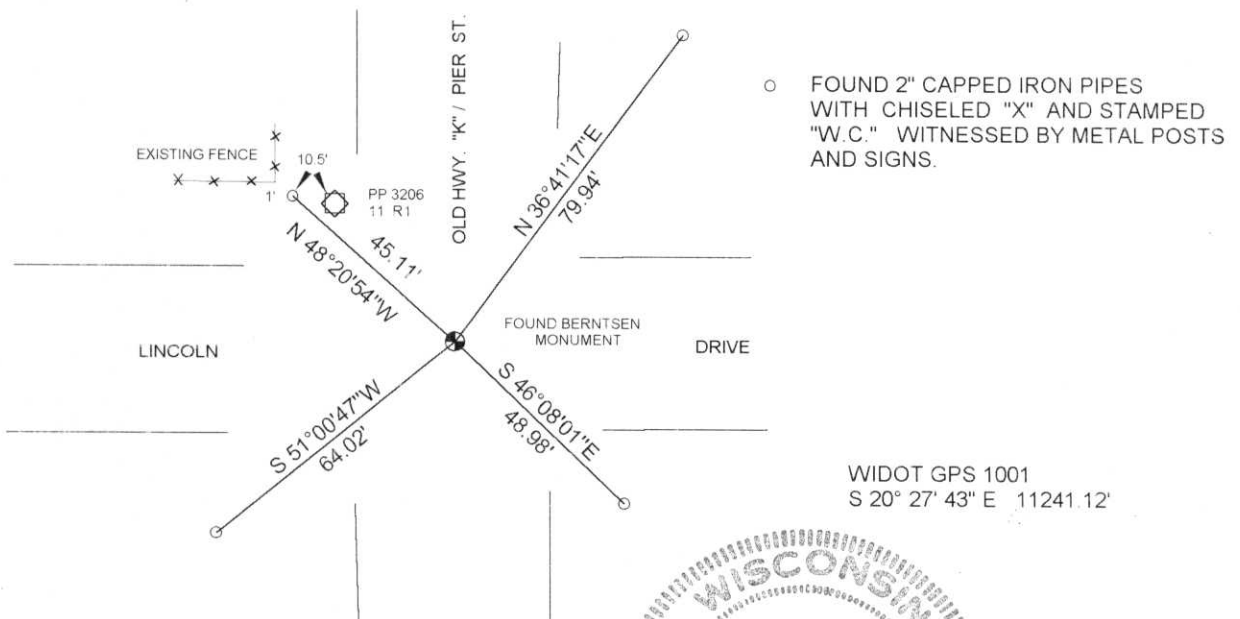
(b) (f) (g) (h) Description of monument found at this corner and if it was accepted, state all evidence (material, testimonial, occupational, plats, records, other monuments) used as a basis for accepting. If not accepted or if nothing was found, state evidence used as basis for establishing location. If reestablished through lost corner proportionate methods, indicate all monuments, distances and directions used to establish.

CORNER HISTORY ON FILE IN COUNTY SURVEYORS OFFICE

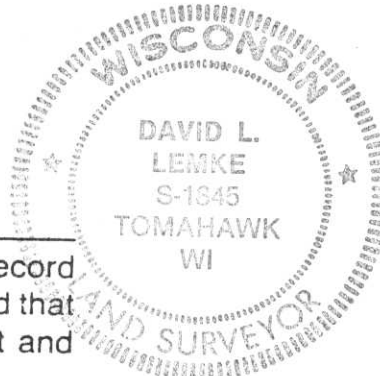
FOUND BERNTSEN MONUMENT SET BY BOB WINAT IN 1972. ALSO FOUND WITNESS TIES AS SHOWN ON LAVERNE MOSHER'S TIE SHEET DATED AUGUST 2, 1991. ALL DISTANCES CHECKED

RECEIVED AT LINCOLN COUNTY
COURTHOUSE THIS 2nd DAY
OF June 19 97
Pat Priebe
TAX DESCRIPTION OFFICE

(c) (d) (e) Plan view of corner with ties to at least 4 witness monuments. If in disagreement with previously established corner, show the distances between the two corners and also indicate the ties to the disputed corner.



WIDOT GPS 1001
S 20° 27' 43" E 11241.12'



(i) I, DAVID L. LEMKE S-1845
(type or print name) certify that the corner location on this record was determined by me or under my direction and control and that this U.S. Public Land Survey Monument Record is correct and complete to the best of my knowledge and belief.

MAY 30 1997

Signature

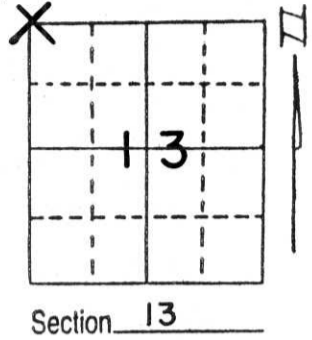
Date

Index No. I-21

U.S. PUBLIC LAND SURVEY MONUMENT RECORD

Note: This form is intended and designed to fulfill all requirements of Wisconsin Administrative Code, Chapter A-E 5.02, U.S. Public Land Survey Monument Record (3) (a) (b) (c) (d) (e) (f) (g) (h) (i). An additional sheet may be added if necessary to conform with said requirements.

(a) Corner location: Township 32 North
 Range 6 East/~~West~~
 Town/~~City/Village~~ MERRILL
 County LINCOLN



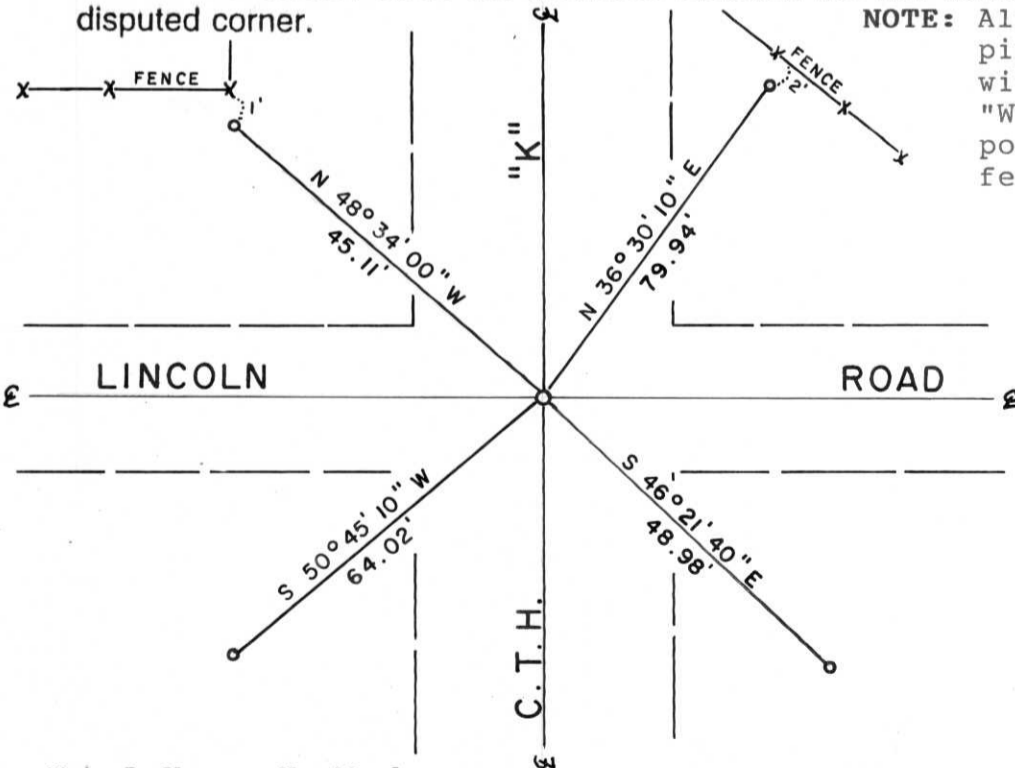
Section 13

(b) (f) (g) (h) Description of monument found at this corner and if it was accepted, state all evidence (material, testimonial, occupational, plats, records, other monuments) used as a basis for accepting. If not accepted or if nothing was found, state evidence used as basis for establishing location. If reestablished through lost corner proportionate methods, indicate all monuments, distances and directions used to establish.

Cornerstone had been dug for by Bob Winat, R.L.S., in 1972 per Wisconsin Department of Transportation landmark sheet obtained from Lincoln County Surveyor. No evidence of corner was discovered so road centerline was accepted as best evidence of corner and an aluminum Berntsen monument was set. On this date, we recovered the aluminum Berntsen at road centerline about 5" below blacktop surface. Corner was stamped $\frac{11}{12}$ Set PK nail $\frac{14}{13}$

in patch directly over center of monument. Accepted corner as correct and tied out same.

(c) (d) (e) Plan view of corner with ties to at least 4 witness monuments. If in disagreement with previously established corner, show the distances between the two corners and also indicate the ties to the disputed corner.



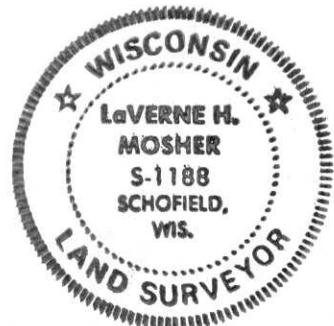
NOTE: All ties are to 2"x30" iron pipes with galvanized cap with chisel "X" and stamped "W.C."; marked with location poster mounted on 4' metal fence post.

RECEIVED AUG 26 1991

(i) I, LaVerne H. Mosher
 (type or print name) certify that the corner location on this record was determined by me or under my direction and control and that this U.S. Public Land Survey Monument Record is correct and complete to the best of my knowledge and belief.

LaVerne H. Mosher
 Signature

AUGUST 2, 1991
 Date



Index No. F-21

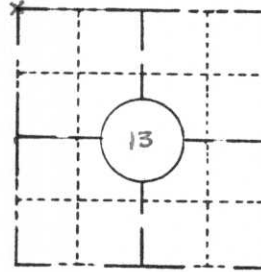
FIELD SURVEY NOTES

PRESERVATION OF LANDMARKS

(Pursuant to Section 59.635(7) Wisconsin Statutes)

Wisconsin Department of Transportation
E-D-707-87

COUNTY <i>Lincoln</i>		
TOWN <i>Merrill</i>		
HIGHWAY <i>U.S.H. 51 FREEWAY</i>		
SECTION <i>13</i>	TOWNSHIP <i>T32N</i>	RANGE <i>R6E</i>
TYPE OF LANDMARK <i>N.W. Section Corner</i>		



LOCATION SKETCH
(Location of landmark indicated by "x")

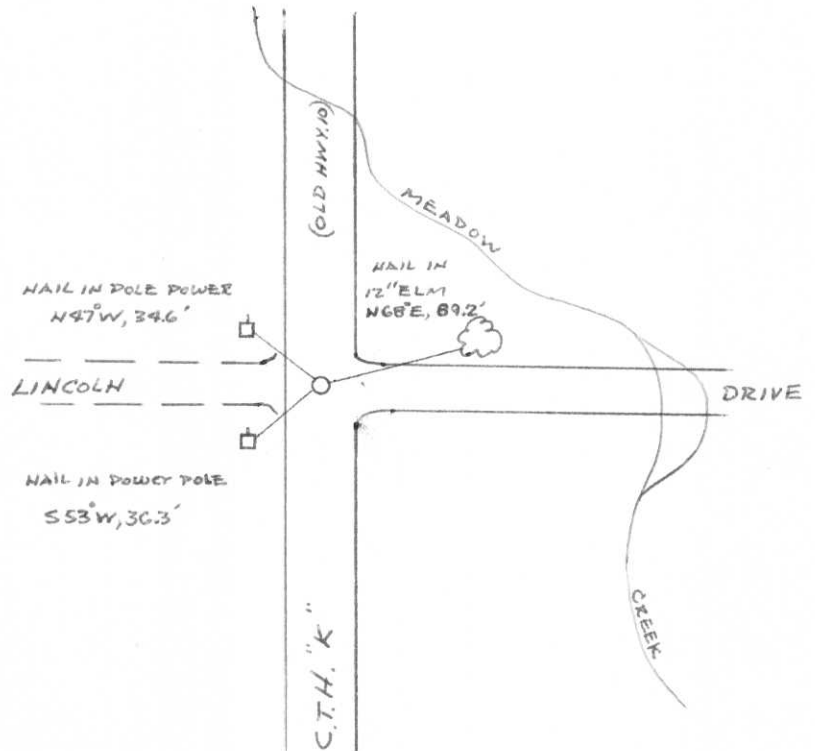


This space for copy of field notes or ties to the above described landmarks

No evidence of the original corner or accessories or any retracement except road improvements was found. Area of intersection of roads was excavated to below orig. surface, but no evidence uncovered.

Distances to $\frac{1}{4}$ corners (by improvements only) are reasonable, but topography calls using Meadow Creek in the original bed would place the corner about 50' East & 100' North of the road intersection.

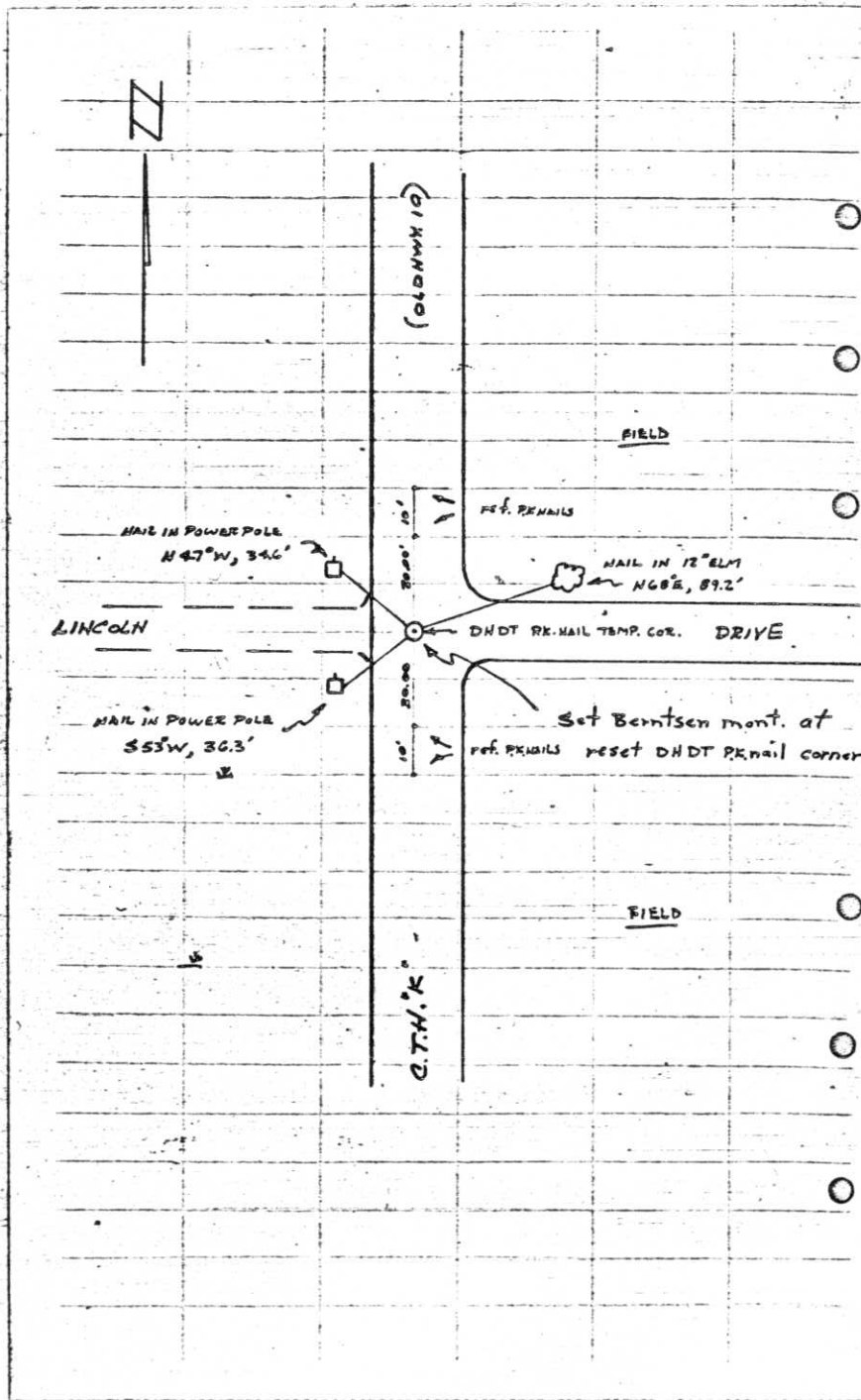
Therefore; the intersection of the roads is the best evidence of the original corner location. Set Berntsen Aluminium Monument and made ties.



FILED UNDER PROJECT <i>U.S.H. 51 FREEWAY</i>		
NUMBER <i>I.D. 1173-0-02</i>		
SHC DISTRICT OFFICE NUMBER <i>7</i>	CITY <i>Tomahawk</i>	COUNTY <i>Lincoln</i>
LOCATED OR ESTABLISHED BY <i>NORTHWOOD SURVEYORS, INC.</i>		
NAME <i>Robert H. Horal</i>		
TITLE <i>Land Surveyor S-1040</i> DATE <i>Dec. 1972</i>		

COUNTY CLERK'S OFFICE	
COUNTY OF <i>Lincoln</i>	WISCONSIN } SS
DATE RECEIVED FOR RECORD <i>1/26/73</i>	DATE COPY SENT TO COUNTY SURVEYOR <i>←</i>
SIGNATURE OF COUNTY CLERK <i>Ken Oldenburg</i>	

Index No. I-21



Section Corner $\frac{11}{12}$ T32N, R6E
Lincoln $\frac{11}{13}$ Co., Wis.

DHDT (Lin. Co.)

11 AUG. 72

WINAT, KASSON, SCHMIT

Referenced DHD T R.K. nail @ temporary location in intersection of Lincoln Dr. & C.T.H. "K" (old HWY 10). Dug with GRAD-ALL (10' x 10' x 3 1/2'). No evidence of corner monumentation found.

27 Oct. 72

Kraemer, Kazda, Sprister

TRAVERSED FROM $\frac{11}{12}$ THRU $\frac{11}{12}$ TO $\frac{12}{13}$ & EASTERLY TO $\frac{12}{13}$ Tying improvements & TOPO.

13 Nov. 72

M'MULLEN, SPRESTER

Set Berntsen Alum. monument, stamped cap, & made ties.



12 1:07 PM



12 1:12 PM



12 1:11 PM