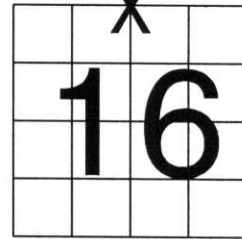


U.S. PUBLIC LAND SURVEY MONUMENT RECORD

NOTE: THIS FORM IS INTENDED AND DESIGNED TO FULFILL ALL REQUIREMENTS OF WISCONSIN ADMINISTRATIVE CODE, CHAPTER A-E 7.08 U.S. PUBLIC
 LAND SURVEY MONUMENT RECORD (3) (a) (b) (c) (d) (e) (f) (g) (h) (i). AN ADDITIONAL SHEET MAY BE ADDED IF NECESSARY TO CONFORM
 WITH SAID REQUIREMENTS.

(a) CORNER LOCATION: TOWNSHIP 32 NORTH
 RANGE 6 EAST/~~WEST~~
 TOWN/~~CITY/VILLAGE~~ ROCK FALLS
 COUNTY LINCOLN



SECTION 16

(b) (f) (g) (h) DESCRIPTION OF MONUMENT FOUND AT THIS CORNER AND IF IT WAS ACCEPTED, STATE ALL EVIDENCE (MATERIAL, TESTIMONIAL, OCCUPATIONAL, PLATS, RECORDS, OTHER MONUMENTS) USED AS BASIS FOR ACCEPTING. IF NOT ACCEPTED OR IF NOTHING WAS FOUND, STATE EVIDENCE USED AS BASIS FOR ESTABLISHING LOCATION. IF REESTABLISHED THROUGH LOST CORNER PROPORTIONATE METHODS, INDICATE ALL MONUMENTS, DISTANCES AND DIRECTIONS USED TO ESTABLISH. INDICATE TYPE OF MONUMENT FOUND OR SET AND SIGN POST.

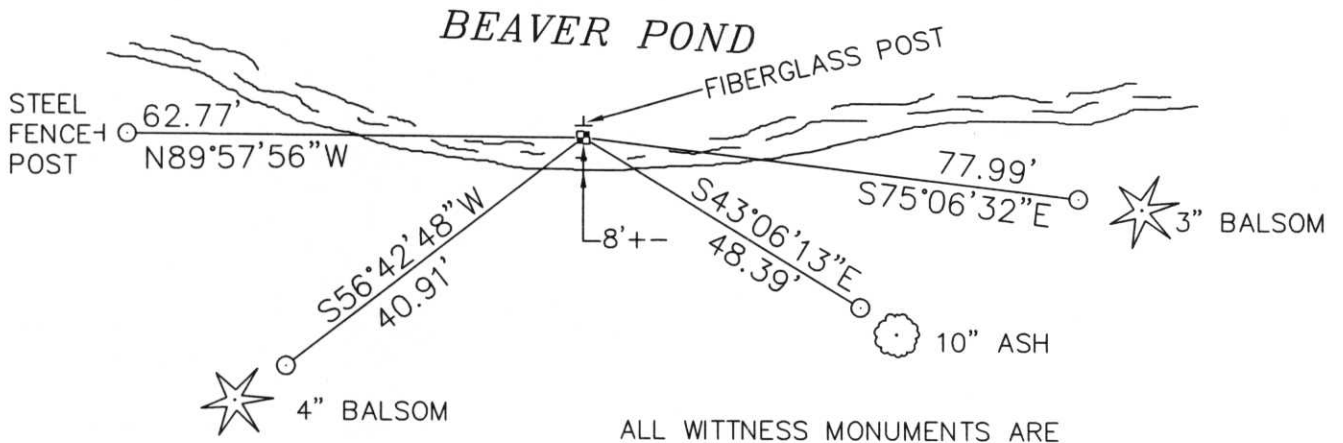
TRAVERSED TO AREA OF CORNER, FOUND THAT CORNER FELL IN BEAVER POND. BOTTOM OF POND IS VERY SOFT, WEARING WADERS, FOUND STONE MONUMENT. STONE IS FLUSH WITH GROUND. SET FIBERGLASS POST ON NORTH SIDE OF STONE. TIED CORNER OUT.

IT LOOKED LIKE THE BEAVER POND IS DOWN ABOUT 16". AS IT IS NOW, THERE IS 10" OF WATER OVER STONE. APPROXIMATELY 8 FEET FROM SHORE.

SEE BACK OF TIE SHEET FOR SECTION BREAKDOWN.

RECEIVED BY LINCOLN COUNTY
 SURVEYOR THIS 3RD DAY
 OF November, 20 05
Tony Dahl
 COUNTY SURVEYOR

(c) (d) (e) PLAN VIEW OF CORNER WITH TIES TO AT LEAST 4 WITNESS MONUMENTS. IF IN DISAGREEMENT WITH PREVIOUSLY ESTABLISHED CORNER, SHOW THE DISTANCES BETWEEN THE TWO CORNERS AND ALSO INDICATE THE TIES TO THE DISPUTED CORNER.



ALL WITNESS MONUMENTS ARE
 3/4" x 30" REBAR WITH ALUMINUM CAP

(i) I, DAVID L. OSTERBRINK RLS NO. S-2014
 (TYPE OR PRINT NAME) CERTIFY THAT THE CORNER
 LOCATION ON THIS RECORD WAS DETERMINED BY ME
 OR UNDER MY DIRECTION AND CONTROL AND THAT
 THIS U.S. PUBLIC LAND SURVEY MONUMENT RECORD
 IS CORRECT AND COMPLETE TO THE BEST OF MY
 KNOWLEDGE AND BELIEF.

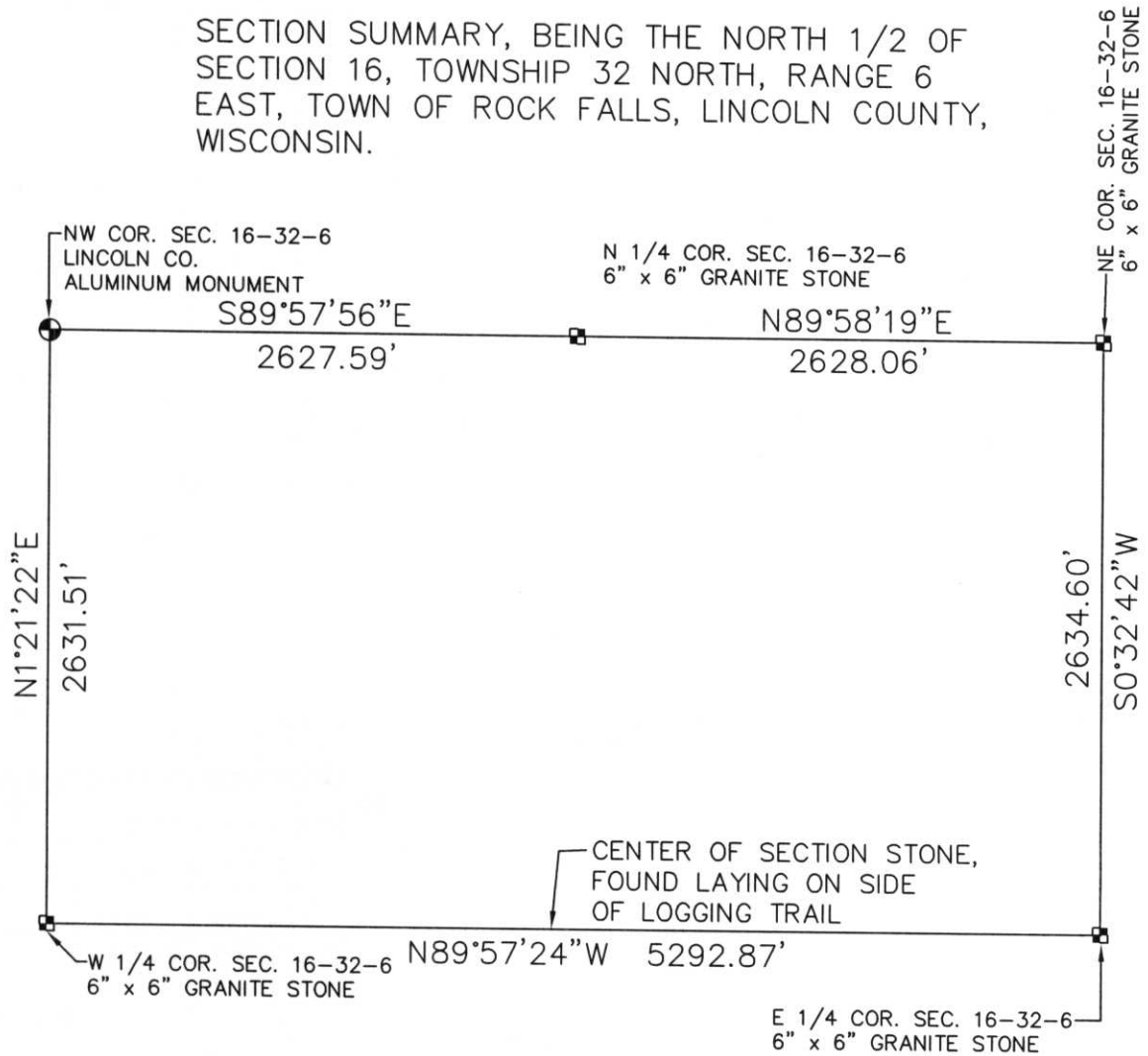
David L. Osterbrink
 SIGNATURE

10-27-05
 DATE



INDEX NO. I-11

SECTION SUMMARY, BEING THE NORTH 1/2 OF SECTION 16, TOWNSHIP 32 NORTH, RANGE 6 EAST, TOWN OF ROCK FALLS, LINCOLN COUNTY, WISCONSIN.



NORTHWOODS SURVEYING
623 JEFFERSON STREET
WAUSAU, WI. 54403
715-845-1249









