

LINCOLN COUNTY U.S. PUBLIC LAND CORNER RESTORATION

The East Quarter corner of Section 8, T. 32 N., R. 6 E.

4320608 2000

Corner was: (check all that apply)

- Restored through acceptance of an obliterated evidence location.
- Restored through acceptance of a found perpetuated location.
- Determined to be lost and re-established through proportionate methods.
(Show bearings and distances to PLSS corners used for proportioning, and show original distances).
- Restored/recovered/re-established in a location that differs from a previously established position.
(Show difference in plan view below).
- Check here if addition information is shown on the reverse side of this form.

Describe record evidence, recovered physical evidence, occupational evidence, testimonial evidence and all other evidence considered in the recovery/restoration of the corner.

The original corner was established in 1852 by A.G. Ellis and F.S. Ellis. Original bearing trees: hemlock, 18", N 88° W, 13 links and a hemlock, 6", S34°E, 22 links. In the 1940's, Francis Fox described this corner as: "Set 1/4 stone on random. at center line of road on fence line. Offset irons E-W 33.0'" On May 26, 2005 we dug with a County backhoe at center of road and 33 feet west of a 1" iron pipe found on the East side of the road. This is an area where the road has been cut considerably. Did not find the stone monument set by Fox. To re-establish this corner, I extended a line from the center of Section 8 easterly through a 1" iron pipe found at the CE 1/16th corner and held a distance of 33.00' West from the recovered "offset iron" set by Fox 33.0' East of the corner. The distance from this corner to the SE corner of Section 8 agrees very well with the Fox distance from the 1940's.

Physical description of the monument set:

I set a Berntsen W-1-B aluminum monument, 6" below gravel road surface

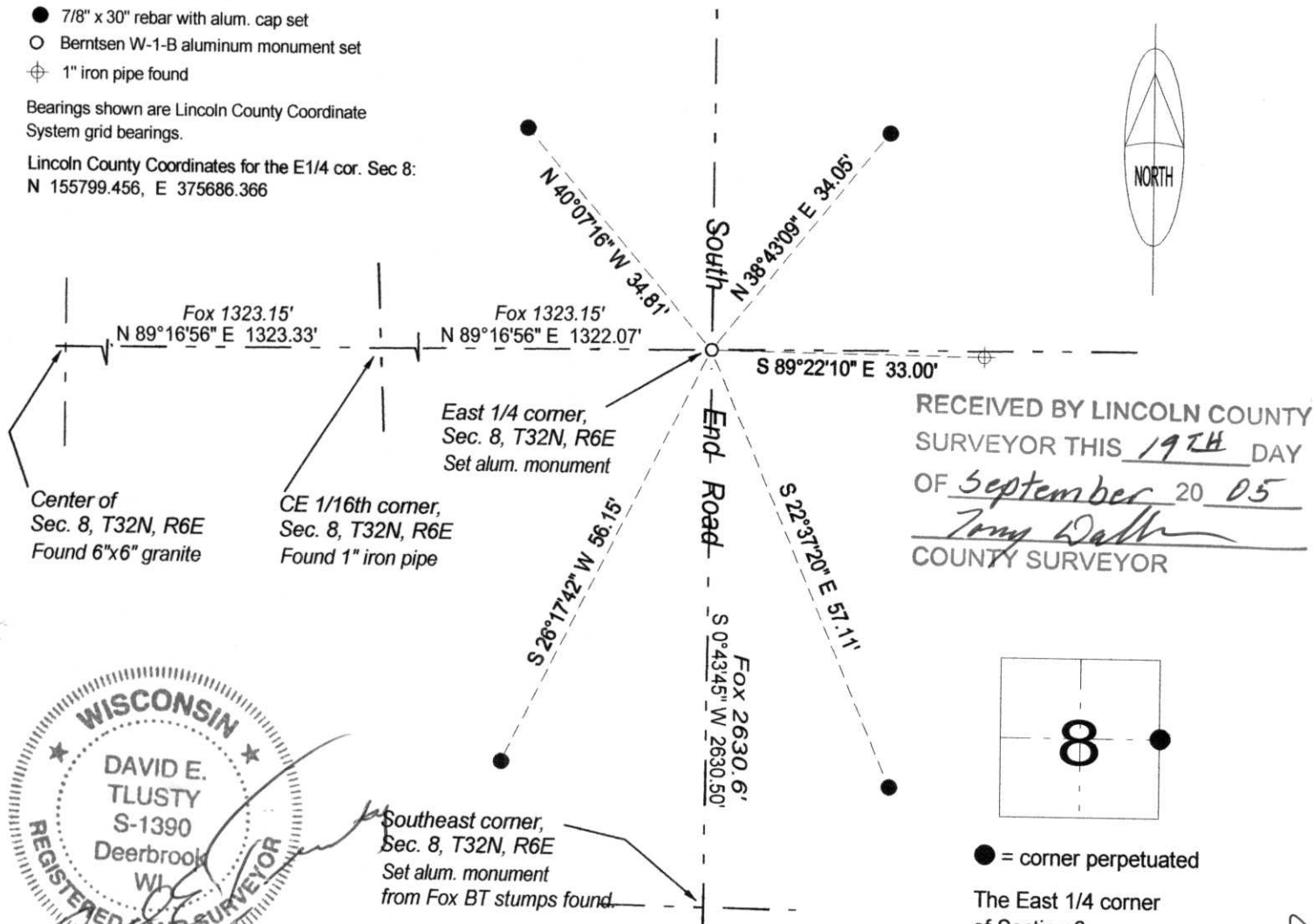
Describe the accessories used to perpetuate the corner. Include a plan view drawing and accessories found/set. Describe measuring point on bearing trees. Show any topographic features that would aid in future recovery of the corner.

LEGEND

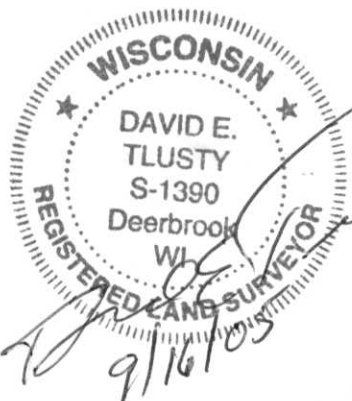
- 7/8" x 30" rebar with alum. cap set
- Berntsen W-1-B aluminum monument set
- ⊕ 1" iron pipe found

Bearings shown are Lincoln County Coordinate System grid bearings.

Lincoln County Coordinates for the E1/4 cor. Sec 8:
N 155799.456, E 375686.366



RECEIVED BY LINCOLN COUNTY SURVEYOR THIS 19TH DAY OF September 20 05
Tom Dalk
COUNTY SURVEYOR



Southeast corner, Sec. 8, T32N, R6E
Set alum. monument from Fox BT stumps found.

I, David E. Tlusty, Wisconsin Registered Land Surveyor s-1390, certify that the corner location on this record was determined by me and that this U.S. Public Land Survey Monument Record is correct to the best of my knowledge and belief.

● = corner perpetuated
The East 1/4 corner of Section 8, T. 32 N., R. 6 E., Lincoln County, WI