

LINCOLN COUNTY U.S. PUBLIC LAND CORNER RESTORATION

The Southeast corner of Section 8, T. 32 N., R. 6 E.

4320608 0000

Corner was: (check all that apply)

- Restored through acceptance of an obliterated evidence location.
- Restored through acceptance of a found perpetuated location.
- Determined to be lost and re-established through proportionate methods.
Show bearings and distances to PLSS corners used for proportioning, and show original distances).
- Restored/recovered/re-established in a location that differs from a previously established position.
(Show difference in plan view below).
- Check here if addition information is shown on the reverse side of this form.

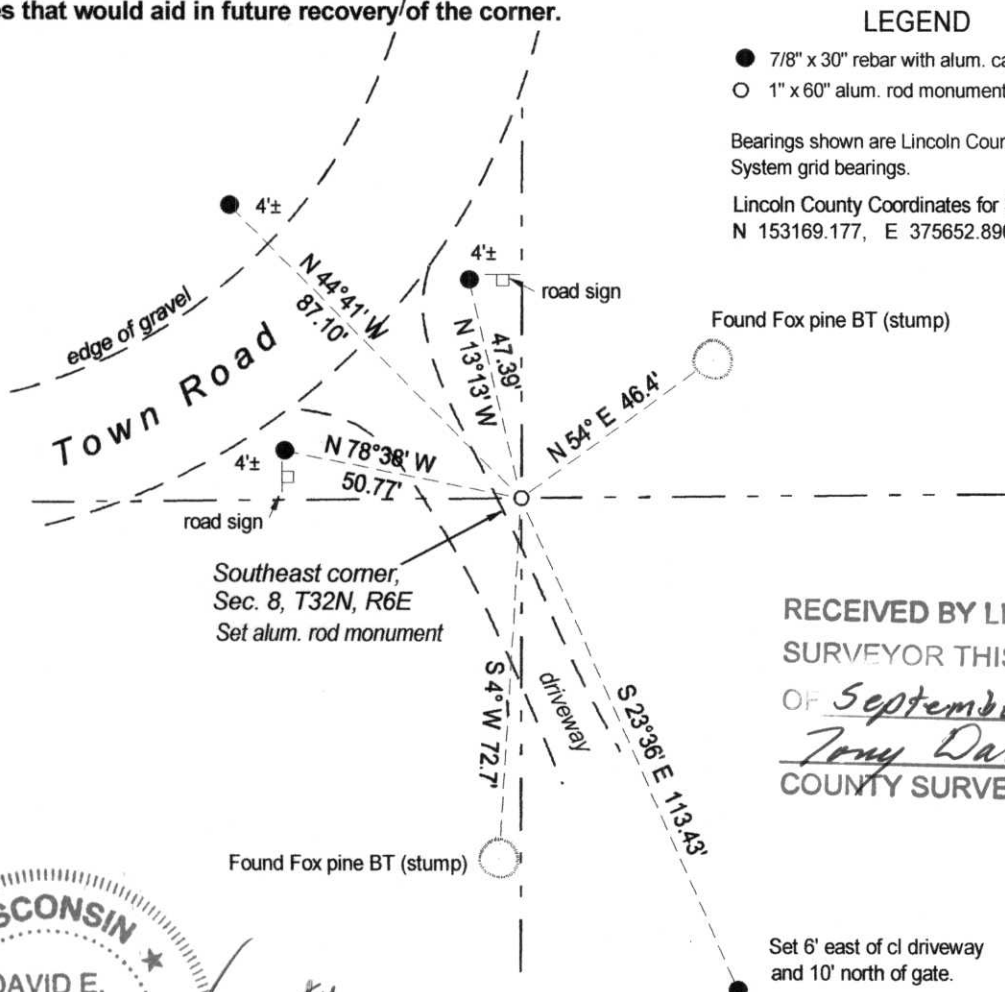
Describe record evidence, recovered physical evidence, occupational evidence, testimonial evidence and all other evidence considered in the recovery/restoration of the corner.

The original corner was established in 1852 by A.G. Ellis and F.S. Ellis. Original bearing trees: tamarac, 8", N50°E, 16 links and a tamarac, 9", N85°W, 13 links. In the 1940's, Francis Fox described this corner as "Set section corners 8 - 9 - 16 - 17 at intersection of roads in south ditch on curve. He measured to two bearing trees: pine, 16", S03°W, 72.7' and a pine, 14", N53°E, 46.4'. He also set a granite monument for the corner. On May 26, 2005 we dug with a County backhoe. Found a 6" x 6" granite stone by Fox. Stone was found on its side. Removed stone and re-established the corner from Foxs' 2 pine BT's which are now good stumps.

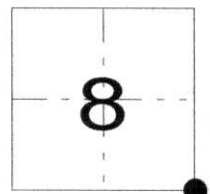
Physical description of the monument set:

I set a Berntsen aluminum rod monument, 1" dia., x 60" long, flush with the ground.
Set a white vinyl sign post withing 0.5' of the corner monument.

Describe the accessories used to perpetuate the corner. Include a plan view drawing and accessories found/set. Describe measuring point on bearing trees. Show any topographic features that would aid in future recovery/of the corner.



RECEIVED BY LINCOLN COUNTY SURVEYOR THIS 19TH DAY OF September 20 05
Troy Dahl
COUNTY SURVEYOR



● = corner perpetuated
The Southeast corner of Section 8, T. 32 N., R. 6 E., Lincoln County, WI

WISCONSIN
★ DAVID E. TLUSTY ★
S-1390
Deerbrook
WI
REGISTERED LAND SURVEYOR

David E. Tlusty
9/16/05

I, David E. Tlusty, Wisconsin Registered Land Surveyor s-1390, certify that the corner location on this record was determined by me and that this U.S. Public Land Survey Monument Record is correct to the best of my knowledge and belief.

I-9