

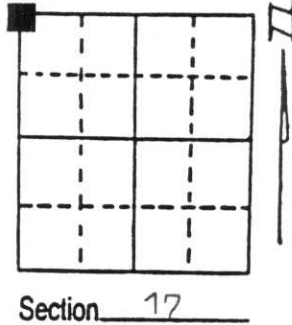
# U.S. PUBLIC LAND SURVEY MONUMENT RECORD

Note: This form is intended and designed to fulfill all requirements of Wisconsin Administrative Code, Chapter A-E 7.08 U.S. Public Land Survey Monument Record (3) (a) (b) (c) (d) (e) (f) (g) (h) (i). An additional sheet may be added if necessary to conform with said requirements.

(a) Corner location: Township 32 North  
 Range 6 East/West

Town Rock Falls

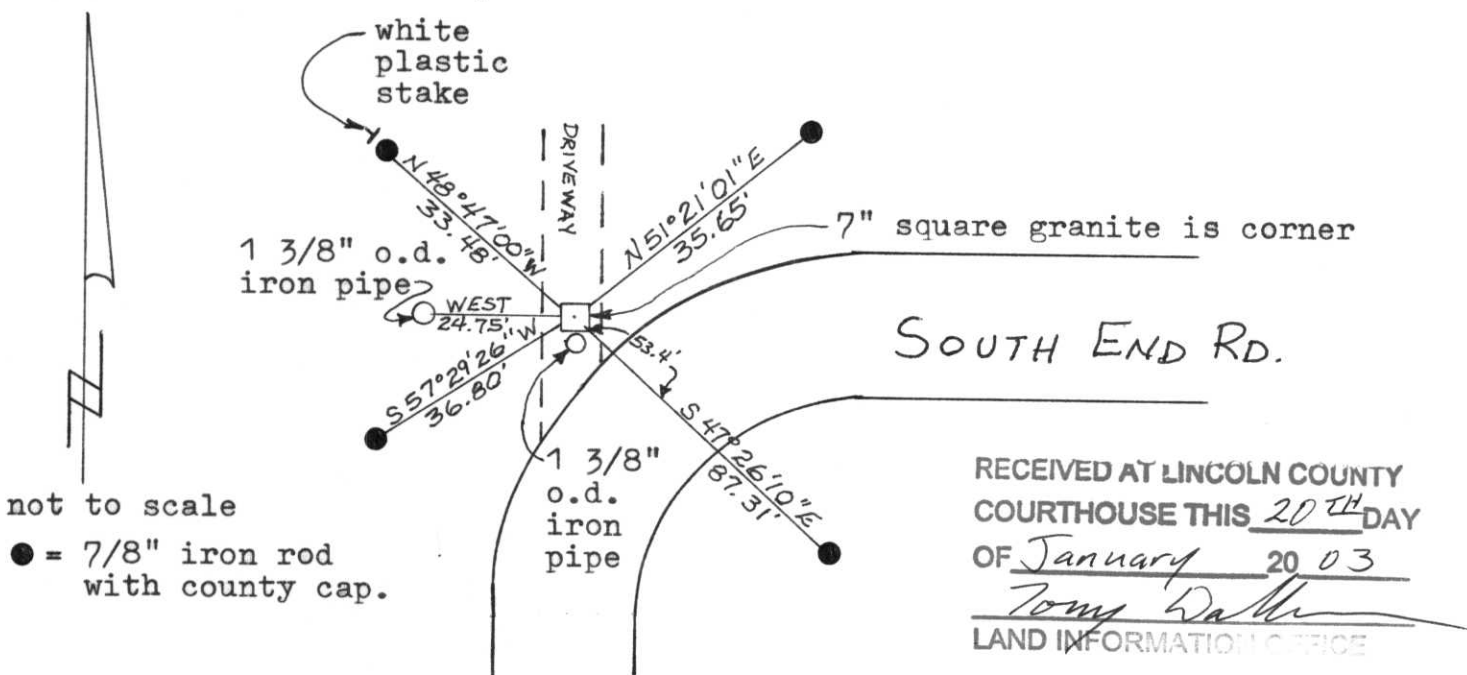
County Lincoln



(b) (f) (g) (h) Description of monument found at this corner and if it was accepted, state all evidence (material, testimonial, occupational, plats, records, other monuments) used as a basis for accepting. If not accepted or if nothing was found, state evidence used as basis for establishing location. If reestablished through lost corner proportionate methods, indicate all monuments, distances and directions used to establish. Indicate type of monument found or set and sign post.

Original Gov't. Survey: Apr. 1852 by A. G. & F. S. Ellis, set wood post for corner with bearings, hemlock 12 N 52° E 12 links and hemlock 6 S 12° W 15 links. On a survey of the town of Rock Falls by Francis Fox map dated 1943, he set a stone for the corner & offset iron west 24.75'. I found the offset iron west 24.75', measured east, dug and found a 7" square gray and black granite, 1.5' below surface in the centre of a driveway. I set a 1 3/8" iron pipe on the south edge of the granite for location purposes. I witnessed the granite corner as shown below.

(c) (d) (e) Plan view of corner with ties to at least 4 witness monuments. If in disagreement with previously established corner, show the distances between the two corners and also indicate the ties to the disputed corner.



not to scale  
 ● = 7/8" iron rod with county cap.

(i) I, Lester J. Schmit  
 (type or print name) certify that the corner location on this record was determined by me or under my direction and control and that this U.S. Public Land Survey Monument Record is correct and complete to the best of my knowledge and belief.

Lester J. Schmit Signature      16 Jan 03 Date



Index No. I-5









