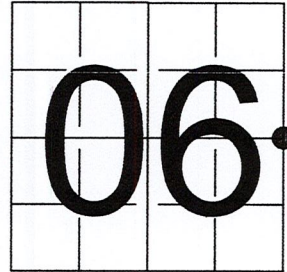


# U S PUBLIC LAND SURVEY MONUMENT RECORD

NOTE: This form is intended and designed to fulfill all requirements of Wisconsin Administrative Code, Chapter A-E 7.08 U.S. Public Land Survey Monument Record (3) (a-i)

A-E 7.08(3)(a) Identity of corner:  
 EAST 1/4 CORNER SECTION 06,  
 TOWNSHIP 32 NORTH,  
 RANGE 06 EAST OF THE 4TH PM,  
 TOWN OF ROCK FALLS,  
 COUNTY OF LINCOLN

WISCORS - LINCOLN COUNTY  
 N: 161,145.338 USft (161,145.269)  
 E: 370,381.769 USft (370,381.680)  
 Datum: NAD83 (2011)  
 GNSS Method RTK  
 Base from GNSS Control set WISCORS VRS



The coordinate value shown has been verified by the average of two or more GPS observations at a markedly different time. Coordinates shown in parenthesis are provided by Lincoln County.

A-E 7.08(3)(b)

Original Surveyor: Albert G. and Fredrick S. Ellis

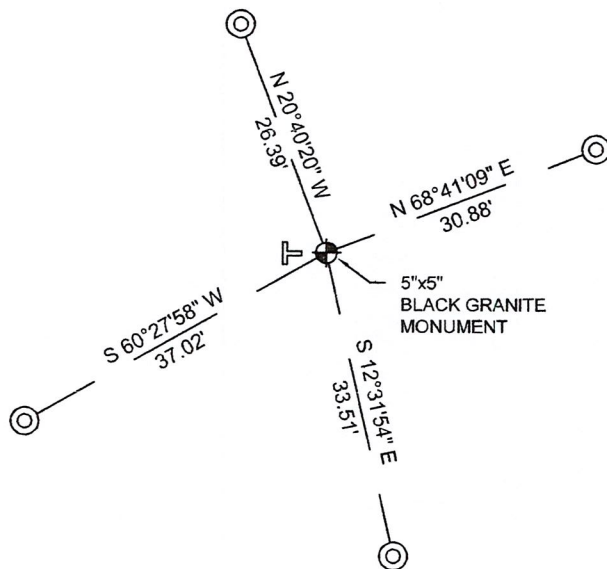
Date of Original Survey Commenced: April 16, 1852  
 Completed: April 29, 1852

Original Accessories:  
 Sugar 12 N 18° E 8 links  
 Sugar 10 S 49° W 6 links

1941 - Francis X. Fox (aka Francis X. Fuchs) - Survey of TWP., 32 & 33 N. ~ R.6 E. Town of Rock Falls - indicates "set corners to all forties on all quarter & section lines" on Map M136A.

December 2, 2022 - While performing the 2022 Lincoln County PLSS Corner Remonumentation and GPS Services project, I found a 5"x5" black granite stone near the computed position provided by Lincoln County. I established 4 new reference monuments as shown below.

A-E 7.08(3)(c)(d) Plan view of corner with references to at least 4 witness monuments.



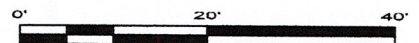
BEARINGS LISTED TO THE NEAREST SECOND ARE REFERENCED TO WISCONSIN COUNTY COORDINATE REFERENCE SYSTEM - LINCOLN COUNTY ZONE. ALL OTHER BEARINGS ARE MAGNETIC



RECEIVED BY LINCOLN COUNTY  
 SURVEYOR THIS 27<sup>TH</sup> DAY  
 OF December 20 22  
*Jeffrey DeMuth*  
 COUNTY SURVEYOR

## LEGEND

- 5" x 5" black granite monument, found
- 7/8" diameter X 30" long - iron rod with 2" diameter aluminum cap, set
- Vinyl T-post, set ±4.5 feet west of corner



A-E 7.08(3)(e) 1852 Surveyor set a post, 1941 Surveyor set a granite stone. I found a 5" x 5" black granite stone.

A-E 7.08(3)(f) I accept this monument as a FOUND PERPETUATED LOCATION of the corner.

A-E 7.08(3)(g)(h) This corner was not determined through lost-corner-proportionate methods.

A-E 7.08(3)(i) I, Jeffrey L. DeMuth, Professional Land Surveyor No. S-2656, hereby certify that the corner location on this record was determined by the Lincoln County Surveyor, and the monuments found or set as shown hereon were measured by me or under my direction and control, and that this U.S. Public Land Survey Monument Record is correct and complete to the best of my knowledge, and belief.

*Jeffrey L. DeMuth*  
 \_\_\_\_\_  
 SIGNATURE

December 14, 2022  
 \_\_\_\_\_  
 DATE



C-5

## REPORT

### 2022-Lincoln County PLSS Corner Remonumentation and GPS Services

Wisconsin Corner Point Identification Number: 43206062000

Surveyor: Jeffrey L. DeMuth – S2656

Corner monument: Found 5" x 5" black granite stone.

Field Book: Cardinal North – Lincoln Co. Remon. – 2022-00

Page: 72

Horizontal Datum: WisCRS – Lincoln County Zone – NAD83(2011)

Date / time of initial measurement:

December 2, 2022 - Start 11:46:43 CST – End 12:07:25 CST

Reference monuments:

4 – Set - 7/8" diameter X 30" long iron rods with 2" diameter Lincoln Co. aluminum cap.

#### Coordinate Table

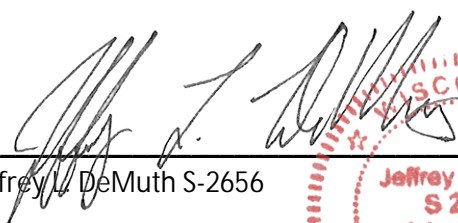

	County Provided	2022 Measurement	Difference
North	161145.269	161145.338	-0.07
East	370381.680	370381.769	-0.09

Observed coordinates match with existing coordinates within reason.

Request Data Log for more information.

Additional Notes:

Observed point using base station-Base from GNSS Control set from WISCORS VRS.

  
 Jeffrey L. DeMuth S-2656
 
 December 12, 2022  
 Date

43206062000\_Mon-N



43206062000\_North



43206062000\_West



43206062000\_South



43206062000\_East

PLEASE  
DO NOT  
DISTURB  
NEARBY

S	M
U	A
R	R
V	K
E	E
Y	R

IF THE LOCATION  
IS THIS MARKED  
IS ENDANGERED  
PLEASE CONTACT  
COUNTY  
SURVEYING  
OFFICE

43206062000

TIGERSUPPLIES.COM