

U.S. PUBLIC LAND SURVEY MONUMENT RECORD

NOTE: THIS FORM IS INTENDED AND DESIGNED TO FULFILL ALL REQUIREMENTS OF WISCONSIN ADMINISTRATIVE CODE, CHAPTER A-E 7.08, U.S. PUBLIC LAND SURVEY MONUMENT RECORD (3) (A) (B) (C) (D) (E) (F) (G) (H) (I). AN ADDITIONAL SHEET MAY BE ADDED IF NECESSARY TO CONFORM WITH SAID REQUIREMENTS.

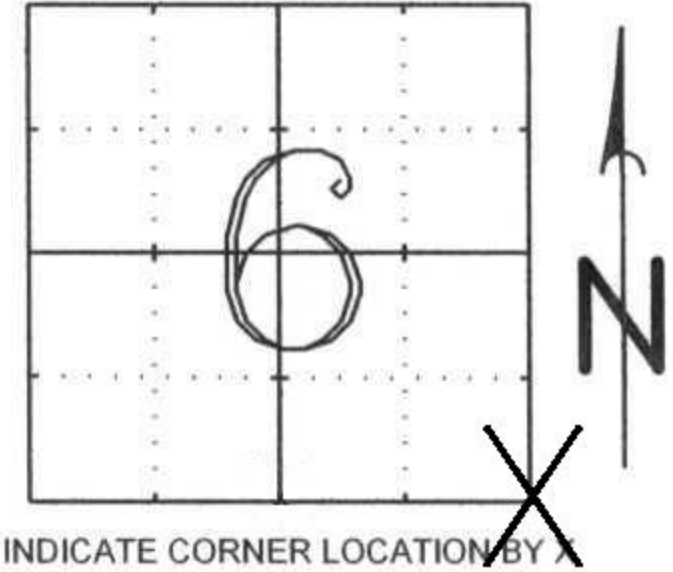
LINCOLN COUNTY

(A) SECTION 6

TOWNSHIP 32 NORTH

RANGE 6 EAST

TOWN, CITY, VILLAGE: ROCK FALLS

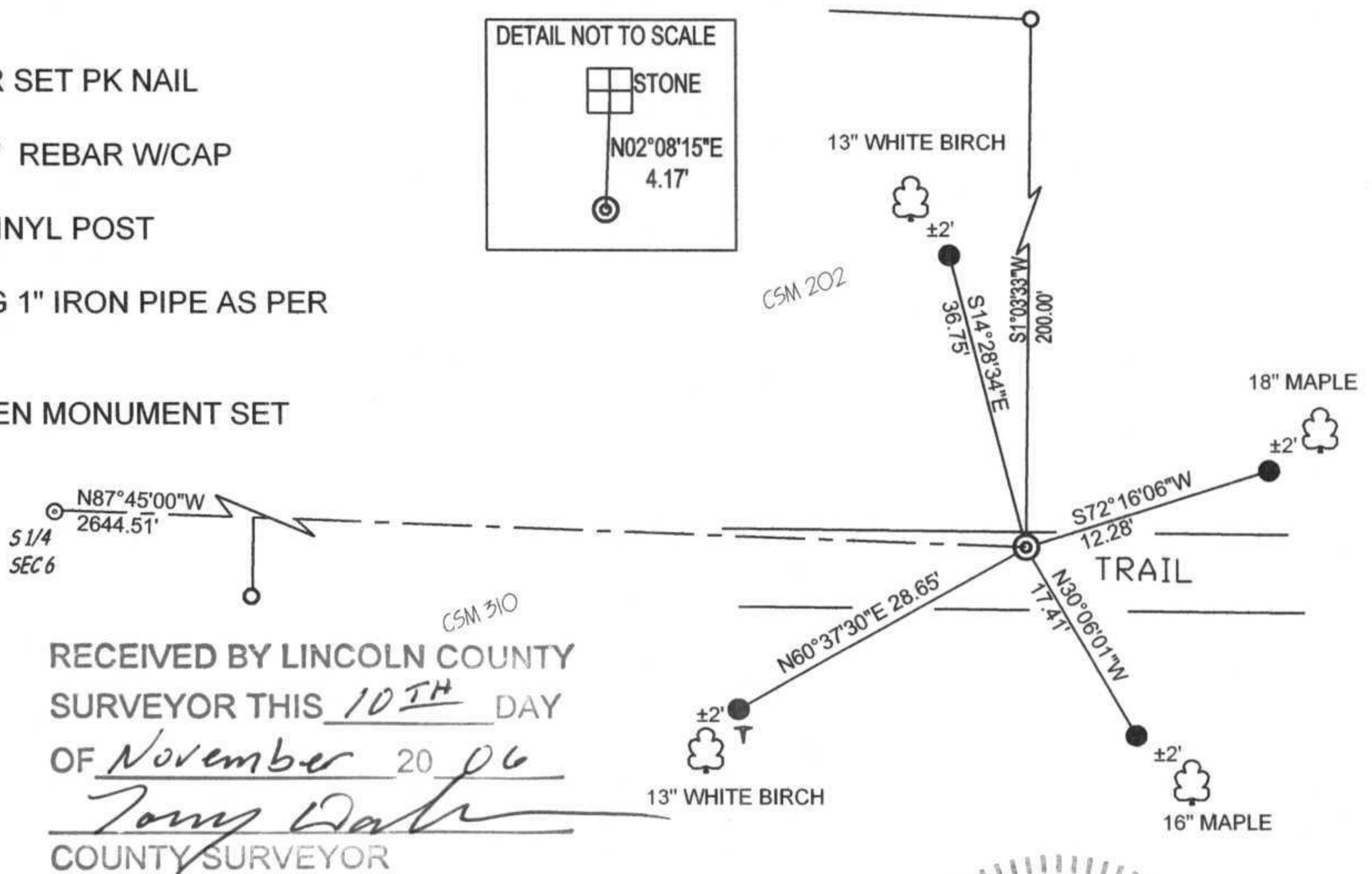
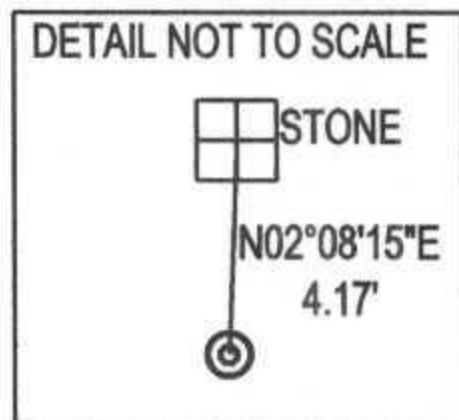


(B) (F) (G) (H) DESCRIPTION OF MONUMENT FOUND AT THIS CORNER AND IF IT WAS ACCEPTED, STATE ALL EVIDENCE (MATERIALS, TESTIMONIAL, OCCUPATIONAL, PLATS, RECORDS, OTHER MONUMENTS) USED AS A BASIS FOR ACCEPTING. IF NOT ACCEPTED OR IF NOTHING WAS FOUND, STATE EVIDENCE USED AS A BASIS FOR ESTABLISHING LOCATION. IF REESTABLISHED THROUGH LOST CORNER PROPORTIONATE METHODS, INDICATE ALL MONUMENTS, DISTANCES, AND DIRECTIONS USED TO ESTABLISH.

STONE MONUMENT FOUND AT CORNER WITH FRESH DIRT AND STONES PILED AROUND IT. CALCULATED POSITION PLACED THE CORNER POSITION ± 4.8 FEET SOUTH OF THE STONE IN THE EDGE OF A CUT BANK CREATED BY A DOZER CUTTING A TRAIL. RECREATED VREELAND SURVEYS CSM 196, 200, 201, 202, 204 AND 310 TO VERIFY AND LOCATE THIS CORNER AND SOUTH 1/4 CORNER OF SECTION. HELD ALIGNMENT FROM CSM 310 AND DISTANCE CHECKS FROM EAST LINE OF CSM 196 AND COMPILED CSM DISTANCE CHECK TO S 1/4 CORNER TO SET BERNTSEN AT THIS CORNER. REMOVED STONE.

(C) (D) (E) PLAN VIEW OF CORNER WITH TIES TO AT LEAST 4 WITNESS MONUMENTS. IF IN DISAGREEMENT WITH PREVIOUSLY ESTABLISHED CORNER, SHOW THE DISTANCES BETWEEN THE TWO CORNERS AND ALSO INDICATE THE TIES TO THE DISPUTED CORNER.

- ⊙ S1/4 COR SET PK NAIL
- 7/8" X 30" REBAR W/CAP
- ⊣ WHITE VINYL POST
- EXISTING 1" IRON PIPE AS PER CSMS
- ⊙ BERNTSEN MONUMENT SET



RECEIVED BY LINCOLN COUNTY
SURVEYOR THIS 10TH DAY
OF November 20 06
Tony Dahn
COUNTY SURVEYOR

(I) I, GENE J. WADZINSKI RLS 2400
(TYPE OR PRINT NAME, LICENSE #) CERTIFY THAT THE CORNER LOCATION ON THIS RECORD WAS DETERMINED BY ME OR UNDER MY DIRECTION AND CONTROL AND THAT THIS U.S. PUBLIC LAND SURVEY MONUMENT RECORD IS CORRECT AND COMPLETE TO THE BEST OF MY KNOWLEDGE AND BELIEF.

SIGNATURE Gene J. Wadzinski DATE 11/2/06

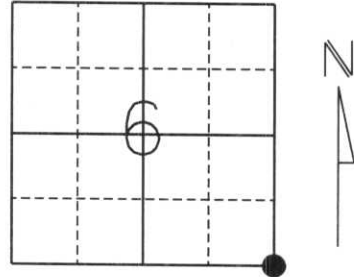


SEAL OR STAMP

U.S. PUBLIC LAND SURVEY MONUMENT RECORD

Note: This form is intended and designed to fulfill all requirements of Wisconsin Administrative Code, Chapter A-E 5.02, U.S. Public Land Survey Monument Record (3) (a) (b) (c) (d) (e) (f) (g) (h) (i). An additional sheet may be added if necessary to conform with said requirements.

(a) Corner location: Township 32 North
 Range 6 East
 Town/City/Village ROCK FALLS
 County LINCOLN



Section 6

(b) (f) (g) (h) Description of monument found at this corner and if it was accepted, state all evidence (material, testimonial, occupational, plats, records, other monuments) used as a basis for accepting. If not accepted or if nothing was found, state evidence used as a basis for establishing location. If reestablished through lost corner proportionate methods, indicate all monuments, distance and directions used to establish.

History of original corner establishment:

Original Survey was April, 1852 by A.G. & F.S. Ellis. Original corner was a wooden post with bearing trees:
 26" Hemlock S18°E, 33 lks.
 12" Hemlock S48°W, 15 lks.

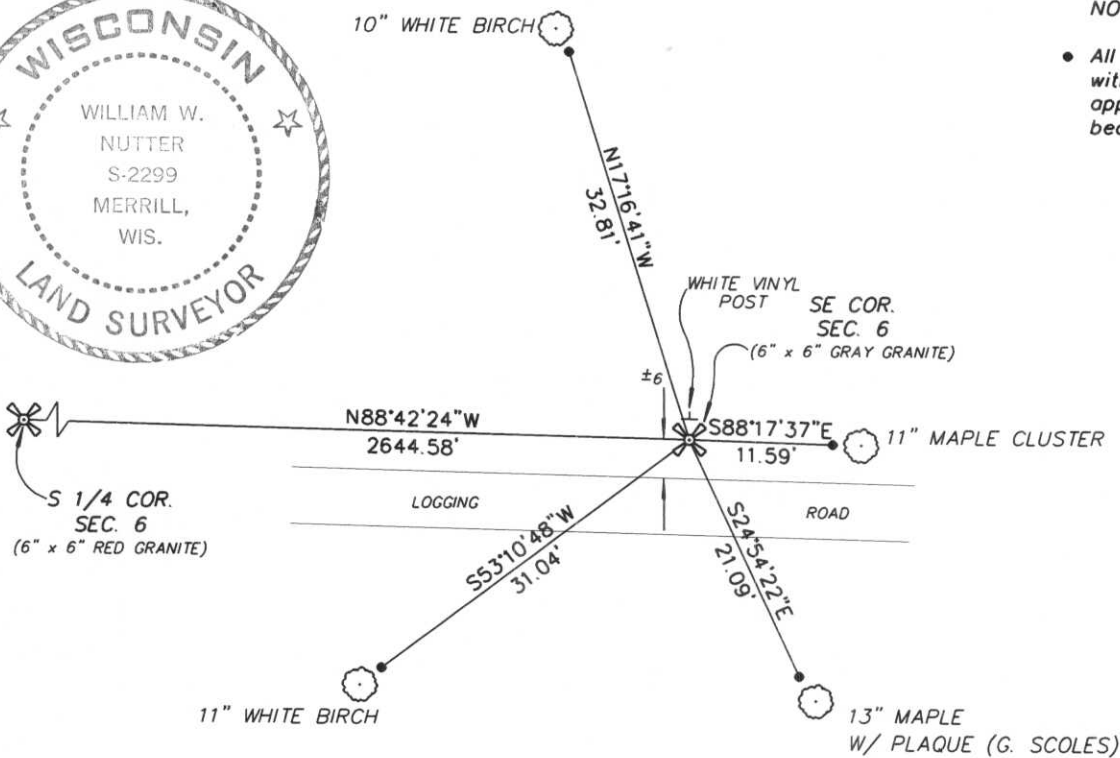
Unknown person and date that set a 6"x6" Gray Granite Stone.

Corner was revisited November 9th, 1982 by a G. Scoles for American Can Company.

Description of corner evidence found:

We located a slightly tipped 6"x6" Gray Granite Stone approximately 6 feet North of logging road and a plaque on a 13" Maple set by a G. Scoles on November 9th, 1982. We straightened the Granite and accepted the position and tied to 7/8" rebar with Lincoln County Caps.

(c) (d) (e) Plan view of corner with ties to at least 4 witness monuments. If in disagreement with previously established corner, show the distances between the two corners and also indicate the ties to the disputed corner.



NOTE: Drawing is not to scale.

- All ties are to 7/8" Rebar with Lincoln County Caps approximately 2 feet from bearing trees.

(i) I, William W. Nutter RLS, S-2299
 (type or print name) certify that the corner location on this record was determined by me or under my direction and control and that this U.S. Public Land Survey Monument Record is correct and complete to the best of my knowledge and belief.

William W. Nutter

4-14-2004

Signature

Date

revised 2/97

Index No.

E-5



MEMBER
PENALTY
LIM
FON







