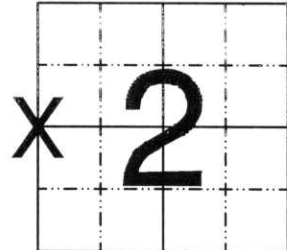


U.S. PUBLIC LAND SURVEY MONUMENT RECORD

NOTE: THIS FORM IS INTENDED AND DESIGNED TO FULFILL ALL REQUIREMENTS OF WISCONSIN ADMINISTRATIVE CODE, CHAPTER LAND SURVEY MONUMENT RECORD (3) (a) (b) (c) (d) (e) (f) (g) (h) (i). AN ADDITIONAL SHEET MAY BE ADDED IF NECESSARY TO CONFORM WITH SAID REQUIREMENTS. A-E 7.08 U.S. PUBLIC

(a) CORNER LOCATION: TOWNSHIP 32 NORTH
 RANGE 6 EAST/~~WEST~~
 TOWN/~~CITY/VILLAGE~~ MERRILL
 COUNTY LINCOLN



SECTION 2

(b) (f) (g) (h) DESCRIPTION OF MONUMENT FOUND AT THIS CORNER AND IF IT WAS ACCEPTED, STATE ALL EVIDENCE (MATERIAL, TESTIMONIAL, OCCUPATIONAL, PLATS, RECORDS, OTHER MONUMENTS) USED AS BASIS FOR ACCEPTING. IF NOT ACCEPTED OR IF NOTHING WAS FOUND, STATE EVIDENCE USED AS BASIS FOR ESTABLISHING LOCATION. IF REESTABLISHED THROUGH LOST CORNER PROPORTIONATE METHODS, INDICATE ALL MONUMENTS, DISTANCES AND DIRECTIONS USED TO ESTABLISH. INDICATE TYPE OF MONUMENT FOUND OR SET AND SIGN POST.

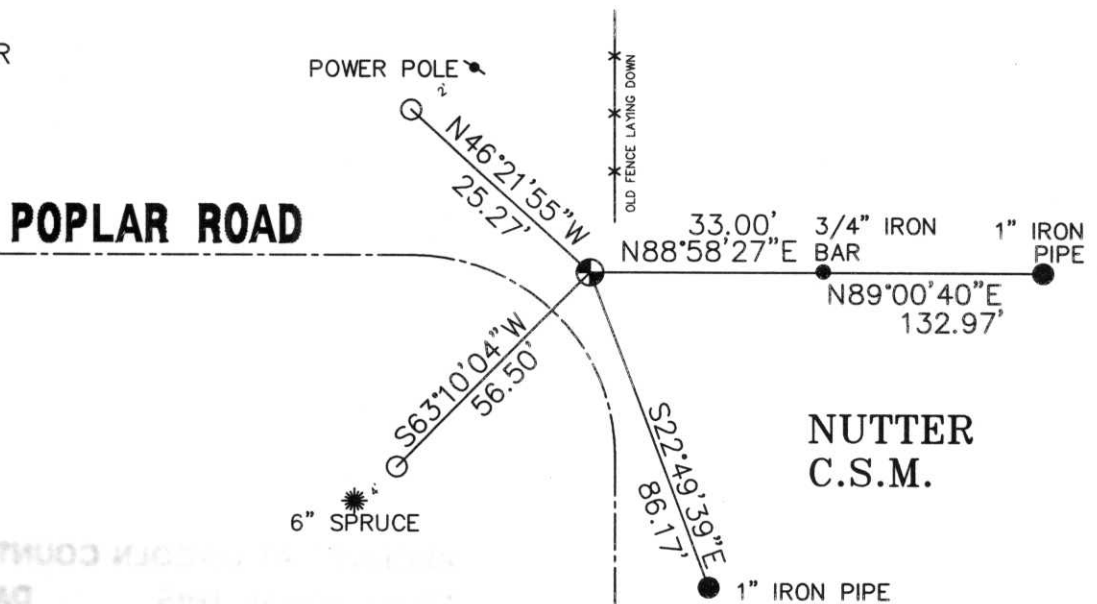
WENT TO CORNER AREA, FOUND 1-3/8" x 24" IRON BAR, THAT BILL NUTTER REFERS TO AS "FOUND 2" IRON ROD". OFFERMAN HAS A SECTION SUMMARY TO THE WEST. FOUND SOME OF HIS IRONS, AND FOUND HIS CORNER LOCATION TO BE 4 FEET NORTH, AND 7 FEET EAST. SEARCHED THIS AREA, FOUND FENCE WIRE RUNNING NORTH SOUTH, BUT NO EVIDENCE OF A MONUMENT. THIS AREA ALSO MATCHED CENTER LINE INTERSECTION. HELD IRON BAR. REMOVED, AND SET A LINCOLN COUNTY BERNTSEN MONUMENT. TIED OUT.

SET CARSONITE WARNING SIGN ON NORTH SIDE OF BERNTSEN.

RECEIVED AT LINCOLN COUNTY
 COURTHOUSE THIS 1st DAY
 OF June 2000
Tony Dallman
 LAND INFORMATION OFFICE

(c) (d) (e) PLAN VIEW OF CORNER WITH TIES TO AT LEAST 4 WITNESS MONUMENTS. IF IN DISAGREEMENT WITH PREVIOUSLY ESTABLISHED CORNER, SHOW THE DISTANCES BETWEEN THE TWO CORNERS AND ALSO INDICATE THE TIES TO THE DISPUTED CORNER.

⊙ = 3/4" x 30" REBAR WITH ALUMINUM CAP



(i) I, DAVID L. OSTERBRINK RLS NO. S-2014
 (TYPE OR PRINT NAME) CERTIFY THAT THE CORNER LOCATION ON THIS RECORD WAS DETERMINED BY ME OR UNDER MY DIRECTION AND CONTROL AND THAT THIS U.S. PUBLIC LAND SURVEY MONUMENT RECORD IS CORRECT AND COMPLETE TO THE BEST OF MY KNOWLEDGE AND BELIEF.

David L. Osterbrink
 SIGNATURE 6-1-00
 DATE



INDEX NO. C-17



2002 10 18



2002 10 16

2007 10 16

100-02-111

100-02-111





2002 10 18