

U.S. PUBLIC LAND SURVEY MONUMENT RECORD

NOTE: THIS FORM IS INTENDED AND DESIGNED TO FULFILL ALL REQUIREMENTS OF WISCONSIN ADMINISTRATIVE CODE, CHAPTER A-E 7.08, U.S. PUBLIC LAND SURVEY MONUMENT RECORD (3)(a)(b)(c)(d)(e)(f)(g)(h)(i). ADDITIONAL SHEETS MAY BE NECESSARY TO CONFORM TO SAID REQUIREMENTS.

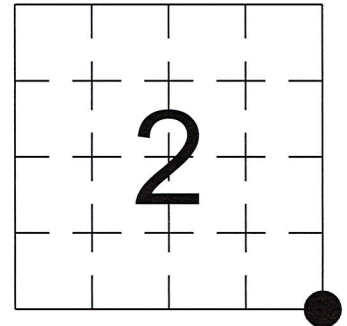
T 32 N, R 6 E

(a) CORNER LOCATION:

SOUTHEAST CORNER, SECTION 2
 TOWNSHIP 32 NORTH
 RANGE 6 EAST
 TOWN OF MERRILL
 LINCOLN COUNTY
 WISCONSIN

(b) HISTORY OF ORIGINAL CORNER:

ORIGINAL SURVEYOR: A.G & F.S. Ellis, Set post
 COMMENCING DATE: April 16, 1852
 COMPLETION DATE: April 29, 1852
 ORIGINAL BEARING TREES:
 14" Hemlock; S 52° E; 12 links
 14" Birch; N 35° E; 24 links



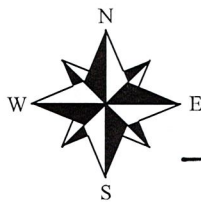
(f)(g)(h) DESCRIPTION OF MONUMENT FOUND AT THIS CORNER AND IF IT WAS ACCEPTED. STATE ALL EVIDENCE (MATERIAL, TESTIMONIAL, OCCUPATIONAL, PLATS, RECORDS, OTHER MONUMENTS) USED AS A BASIS FOR ESTABLISHING LOCATION. IF RE-ESTABLISHING THROUGH LOST CORNER PROPORTIONATE METHODS, INDICATE ALL MONUMENTS, DISTANCES, AND DIRECTIONS USED TO ESTABLISH. INDICATE TYPE OF MONUMENTS FOUND OR SET.

1997, David Lemke found a 1" X 36" Iron Bar and set a Berntsen Monument at found Iron Bar location.

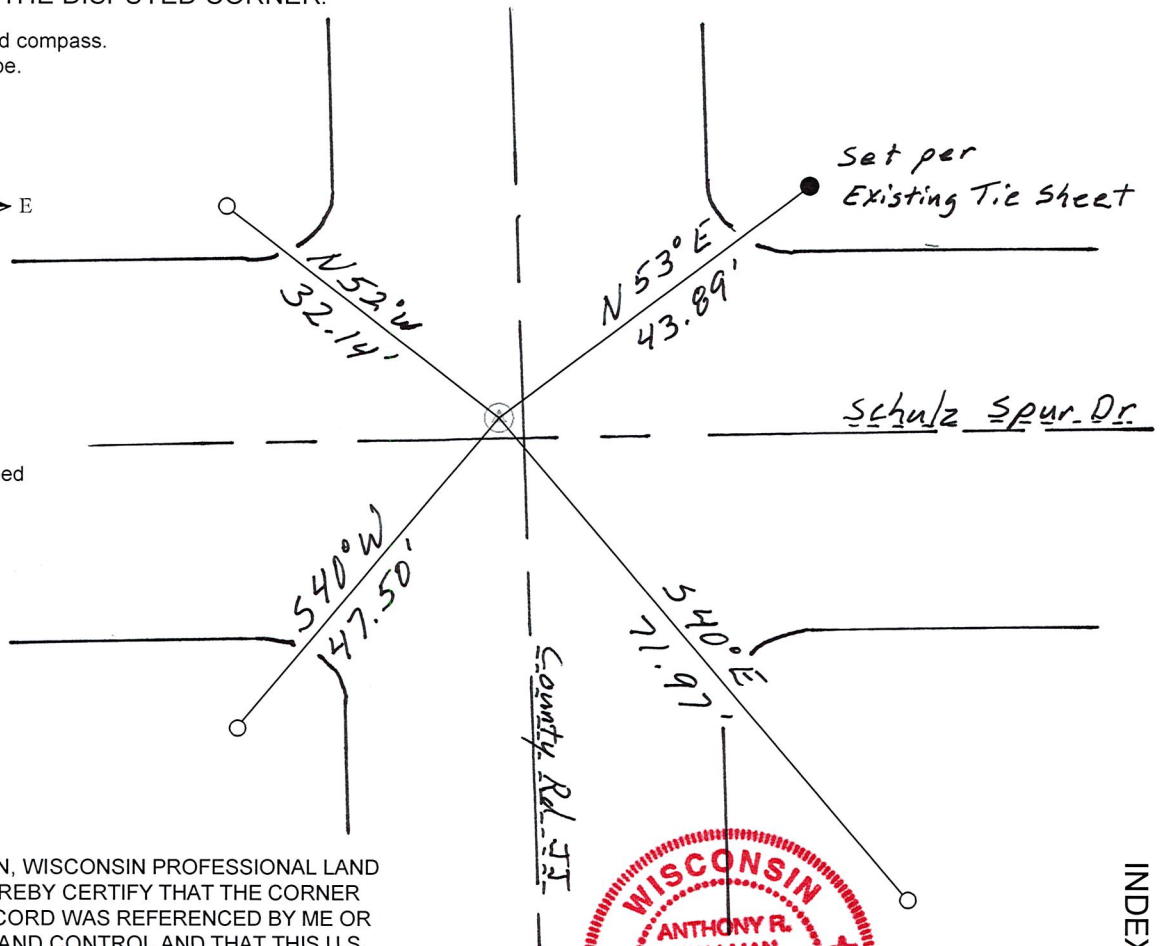
4/25/2019, I, Anthony R. Dallman, PLS-2405, found a surface P.K. Nail and 3 of Lemke's ties. I accepted this location and set a new reference tie to further perpetuate the corner location as shown in the sketch below.

(c)(d)(e) PLAN VIEW OF THE CORNER WITH TIES TO AT LEAST FOUR WITNESSES. IF IN DISAGREEMENT WITH PREVIOUSLY ESTABLISHED CORNER, SHOW THE DISTANCES BETWEEN THE TWO CORNERS AND ALSO THE TIES TO THE DISPUTED CORNER.

- Tie bearings by hand-held compass.
- Tie distances by steel tape.
- Not to scale.



- - Set 7/8" Capped Rebar
- - Found 7/8" Capped Rebar



I, ANTHONY R. DALLMAN, WISCONSIN PROFESSIONAL LAND SURVEYOR, S-2405, HEREBY CERTIFY THAT THE CORNER LOCATION ON THIS RECORD WAS REFERENCED BY ME OR UNDER MY DIRECTION AND CONTROL AND THAT THIS U.S. PUBLIC LAND SURVEY MONUMENT RECORD IS COMPLETE TO THE BEST OF MY KNOWLEDGE AND BELIEF.

Anthony R. Dallman 8/20/19
 ANTHONY R. DALLMAN, PLS S-2405



INDEX NO. E-21

U.S. PUBLIC LAND SURVEY MONUMENT RECORD

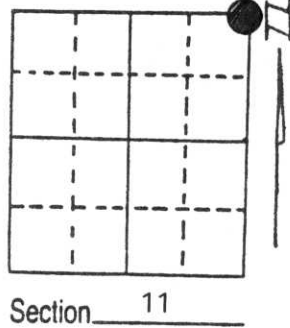
Note: This form is intended and designed to fulfill all requirements of Wisconsin Administrative Code, Chapter A-E 5.02, U.S. Public Land Survey Monument Record (3) (a) (b) (c) (d) (e) (f) (g) (h) (i). An additional sheet may be added if necessary to conform with said requirements.

(a) Corner location: Township 32 North

Range 6 East

Town/City/Village TN OF MERRILL

County LINCOLN



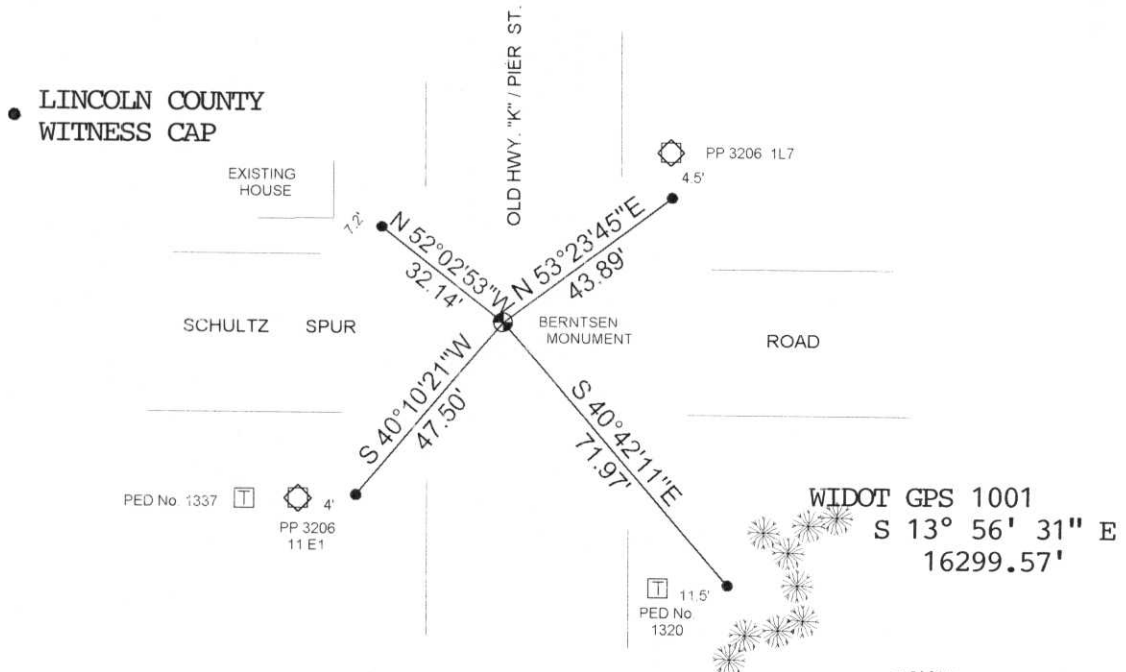
(b) (f) (g) (h) Description of monument found at this corner and if it was accepted, state all evidence (material, testimonial, occupational, plats, records, other monuments) used as a basis for accepting. If not accepted or if nothing was found, state evidence used as basis for establishing location. If reestablished through lost corner proportionate methods, indicate all monuments, distances and directions used to establish.

CORNER HISTORY ON FILE IN COUNTY SURVEYORS OFFICE

APRIL 1997 EXCAVATED INTERSECTION OF SCHULTZ SPUR RD. AND PIER ST.
RECOVERED A 1"x36" IRON BAR 3' BELOW THE PAVEMENT.
SET BERTSEN MONUMENT AT FOUND BAR'S LOCATION.

RECEIVED AT LINCOLN COUNTY
COURTHOUSE THIS 2nd DAY
OF June 19 97
Pat Priske
TAX DESCRIPTION OFFICE

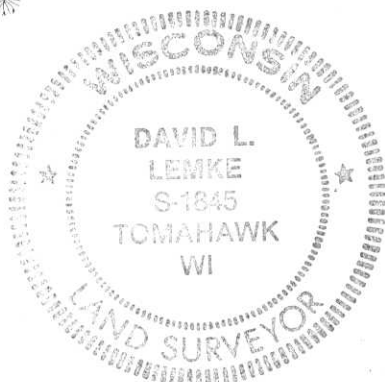
(c) (d) (e) Plan view of corner with ties to at least 4 witness monuments. If in disagreement with previously established corner, show the distances between the two corners and also indicate the ties to the disputed corner.



(i) I, DAVID L. LEMKE S-1845
(type or print name) certify that the corner location on this record was determined by me or under my direction and control and that this U.S. Public Land Survey Monument Record is correct and complete to the best of my knowledge and belief.

[Handwritten Signature]
Signature

MAY 30 1997
Date



Index No. E-21

A close-up photograph of a grey gravel surface. In the center, there is a small, dark, circular object, possibly a coin or a small stone. Two orange lines are drawn on the gravel, forming a V-shape that points towards the dark object. The background is a dense field of grey and brown gravel.

2002 10 16



2002 10 16



2002 10 16