

U.S. PUBLIC LAND SURVEY MONUMENT RECORD

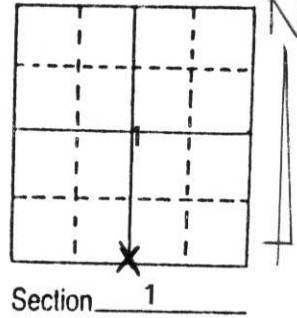
Note: This form is intended and designed to fulfill all requirements of Wisconsin Administrative Code, Chapter A-E 5.02, U.S. Public Land Survey Monument Record (3) (a) (b) (c) (d) (e) (f) (g) (h) (i). An additional sheet may be added if necessary conform with said requirements.

(a) Corner location: Township 32 North

Range 6 East

Town/City/Village TOWN OF MERRILL

County LINCOLN

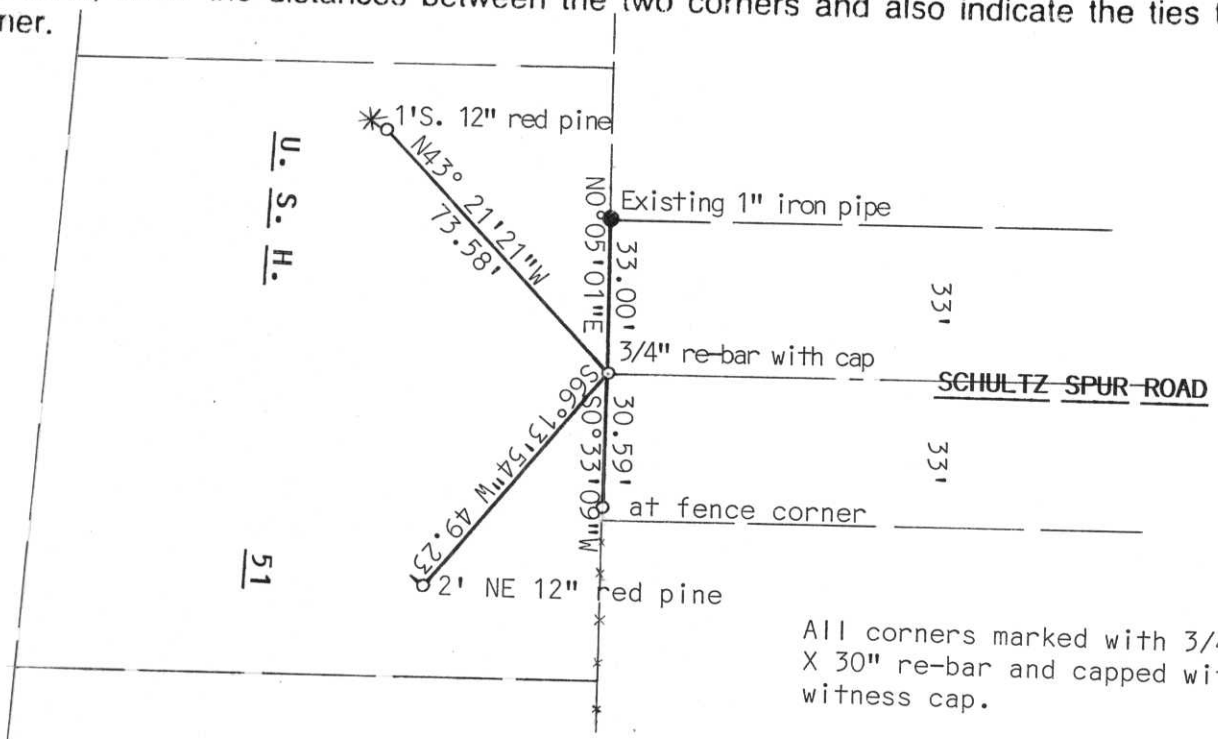


(b) (f) (g) (h) Description of monument found at this corner and if it was accepted, state all evidence (material, testimonial, occupational, plats, records, other monuments) used as a basis for accepting. If not accepted or if nothing was found, state evidence used as basis for establishing location. If reestablished through lost corner proportionate methods, indicate all monuments, distances and directions used to establish.

Searching with the metal locator we found 3" PK nail 6" below road surface, digging futher we found 3/4" iron re-bar, with cap. Found no other evidence. Road section was in large cut section. Accepted iron bar as correct, fit fence to south.

**RECEIVED AT LINCOLN COUNTY
COURTHOUSE THIS 23rd DAY
OF Aug 19 96.
Pat Pricker
TAX DESCRIPTION OFFICE**

(c) (d) (e) Plan view of corner with ties to at least 4 witness monuments. If in disagreement with previously established corner, show the distances between the two corners and also indicate the ties to the disputed corner.



All corners marked with 3/4" X 30" re-bar and capped with witness cap.

(i) I, Edwin R. Abendroth

(type or print name) certify that the corner location on this record was determined by me or under my direction and control and that this U.S. Public Land Survey Monument Record is correct and complete to the best of my knowledge and belief.

Edwin R. Abendroth August 19, 1996

Signature

Date



Index No. E-23