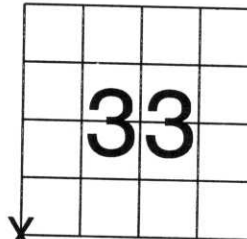


RECEIVED AT LINCOLN COUNTY
 COURTHOUSE THIS 18th DAY
 OF August 2003
Tommy Deth
 LAND INFORMATION OFFICE

U.S. PUBLIC LAND SURVEY MONUMENT RECORD

NOTE: THIS FORM IS INTENDED AND DESIGNED TO FULFILL ALL REQUIREMENTS OF WISCONSIN ADMINISTRATIVE CODE, CHAPTER A-E 7.08 U.S. PUBLIC LAND SURVEY MONUMENT RECORD (3) (a) (b) (c) (d) (e) (f) (g) (h) (i). AN ADDITIONAL SHEET MAY BE ADDED IF NECESSARY TO CONFORM WITH SAID REQUIREMENTS.

(a) CORNER LOCATION: TOWNSHIP 32 NORTH
 RANGE 5 EAST/~~WEST~~
 TOWN/CITY/VILLAGE HARDING
 COUNTY LINCOLN

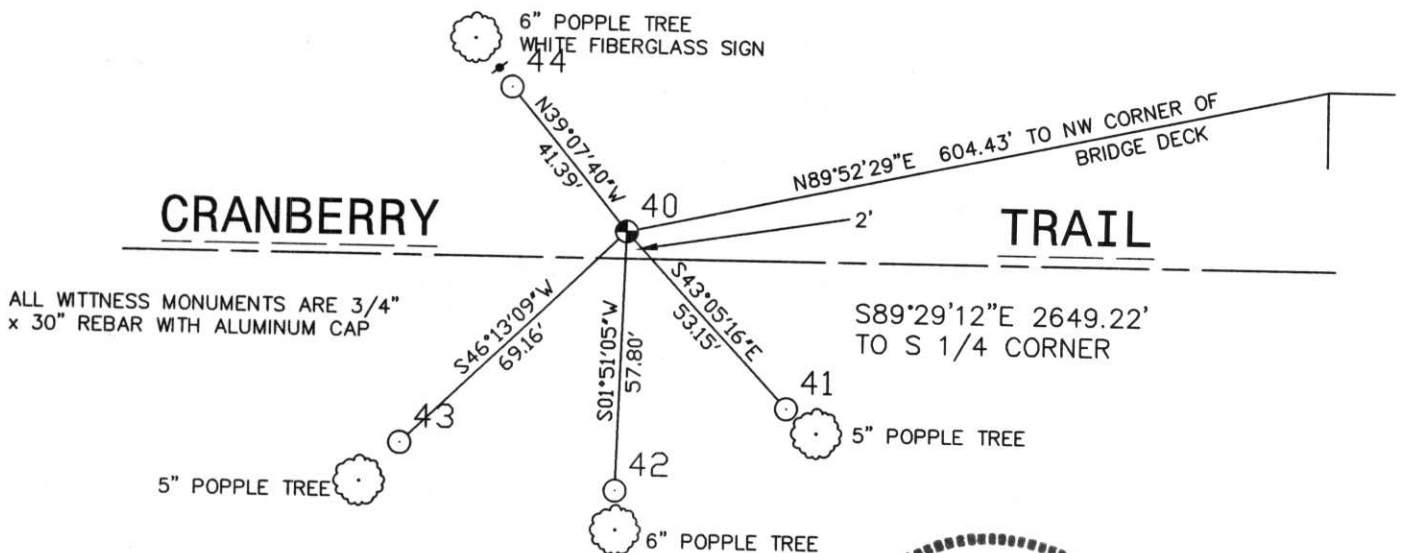


SECTION 33

(b) (f) (g) (h) DESCRIPTION OF MONUMENT FOUND AT THIS CORNER AND IF IT WAS ACCEPTED, STATE ALL EVIDENCE (MATERIAL, TESTIMONIAL, OCCUPATIONAL, PLATS, RECORDS, OTHER MONUMENTS) USED AS BASIS FOR ACCEPTING. IF NOT ACCEPTED OR IF NOTHING WAS FOUND, STATE EVIDENCE USED AS BASIS FOR ESTABLISHING LOCATION. IF REESTABLISHED THROUGH LOST CORNER PROPORTIONATE METHODS, INDICATE ALL MONUMENTS, DISTANCES AND DIRECTIONS USED TO ESTABLISH. INDICATE TYPE OF MONUMENT FOUND OR SET AND SIGN POST.

USING BACKHOE PROVIDED BY COPPER RIVER DEVELOPMENT COMPANY, ALAN KOEHLER, OPERATOR, WE DUG AND FOUND A 6" x 6" GRANITE STONE MONUMENT, IN TWO PIECES. NONE OF THE STONE PIECES HAD AN X ON TOP. IT LOOKED LIKE STONE HAD BEEN HIT BY GRADER MANY TIMES. STONE WAS ABOUT 3 FEET BELOW ROAD SURFACE. ROAD HAD BEEN SAND LIFTED ABOUT 2 FEET. HELD LONGER PIECE OF MONUMENT, STILL IN UPRIGHT POSITION AS CORNER LOCATION. SET A BERNTSEN MONUMENT FOR CORNER, LEAVING GRANITE STONE PIECES IN HOLE. WHEN WE SET THE BERNTSEN MONUMENT (AFTER BACK FILLING), WE BROKE THE BOTTOM PART OF BERNTSEN OFF (HIT GRANITE MONUMENTS) BERNTSEN IS ABOUT 8" BELOW ROAD SURFACE. DISTANCES TO IRON PIPES AT 40 LINE TO WEST, AND TO S 1/4 CORNER OF SEC. 33 LOOKED GOOD. HELD AS CORNER.

(c) (d) (e) PLAN VIEW OF CORNER WITH TIES TO AT LEAST 4 WITNESS MONUMENTS. IF IN DISAGREEMENT WITH PREVIOUSLY ESTABLISHED CORNER, SHOW THE DISTANCES BETWEEN THE TWO CORNERS AND ALSO INDICATE THE TIES TO THE DISPUTED CORNER.



(i) I, DAVID L. OSTERBRINK RLS NO. S-2014
 (TYPE OR PRINT NAME) CERTIFY THAT THE CORNER LOCATION ON THIS RECORD WAS DETERMINED BY ME OR UNDER MY DIRECTION AND CONTROL AND THAT THIS U.S. PUBLIC LAND SURVEY MONUMENT RECORD IS CORRECT AND COMPLETE TO THE BEST OF MY KNOWLEDGE AND BELIEF.

David L. Osterbrink
 SIGNATURE

8-16-03

DATE



INDEX NO.

1-9

STAMP





