

# U.S. PUBLIC LAND SURVEY MONUMENT RECORD

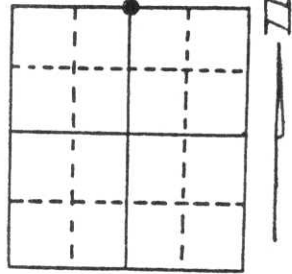
Note: This form is intended and designed to fulfill all requirements of Wisconsin Administrative Code, Chapter A-E 5.02, U.S. Public Land Survey Monument Record (3) (a) (b) (c) (d) (e) (f) (g) (h) (i). An additional sheet may be added if necessary to conform with said requirements.

(a) Corner location: Township 32 North

Range 5 East

Town/City/Village TOWN OF HARDING

County LINCOLN



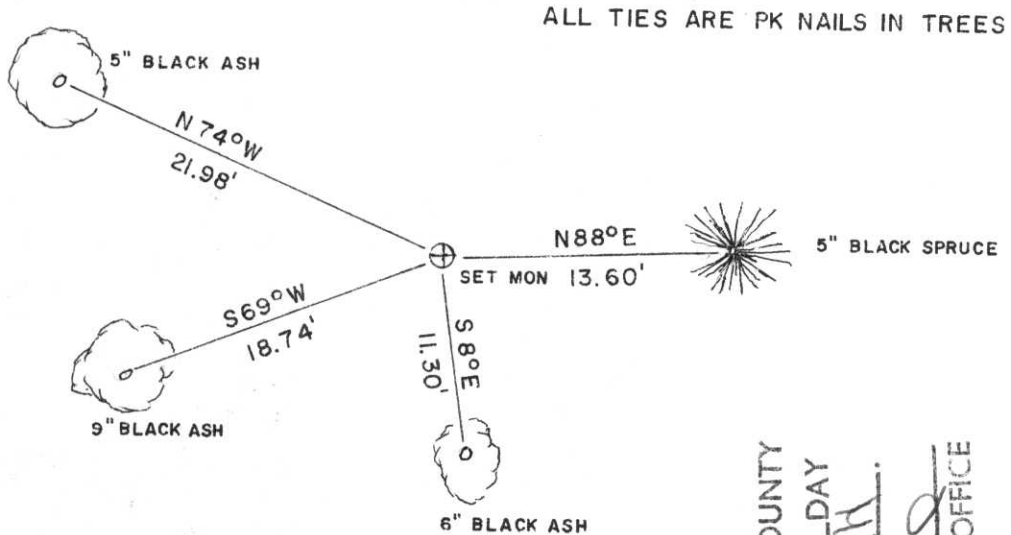
Section 31

(b) (f) (g) (h) Description of monument found at this corner and if it was accepted, state all evidence (material, testimonial, occupational, plats, records, other monuments) used as a basis for accepting. If not accepted or if nothing was found, state evidence used as basis for establishing location. If reestablished through lost corner proportionate methods, indicate all monuments, distances and directions used to establish.

An extensive search was completed for original or secondary evidence of this corner location. After the search provided no positive evidence of the corner location, I decided to use straight-line single proportionate measurement to control the location of this corner. This location fits well with existing blaze lines to the North-South and the East-West. I believe the topographic call to the swamp in the original notes to be in err. The swamp runs almost ENE-WSW in this location but was called in the original notes to be running NW-SE.



(c) (d) (e) Plan view of corner with ties to at least 4 witness monuments. If in disagreement with previously established corner, show the distances between the two corners and also indicate the ties to the disputed corner.



(i) I, DAN HIGGINBOTHAM  
 (type or print name) certify that the corner location on this record was determined by me or under my direction and control and that this U.S. Public Land Survey Monument Record is correct and complete to the best of my knowledge and belief.

Dan Higginbotham 2-9-94  
 Signature Date

RECEIVED AT LINCOLN COUNTY  
 COURTHOUSE THIS 4 DAY  
19  
 OF March 1994  
 TAX DESCRIPTION OFFICE

Index No. 4-3