

# U.S. PUBLIC LAND SURVEY MONUMENT RECORD

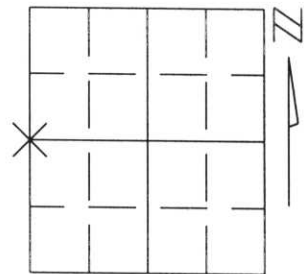
Note: This form is intended and designed to fulfill all requirements of Wisconsin Administrative Code, Chapter A-E 5.02, U.S. Public Land Survey Monument Record (3)(a)(b)(c)(d)(e)(f)(g)(h)(i). An additional sheet may be added if necessary to conform with said requirements.

(a) Corner location: Township 32 North

Range 5 East

Town/City/Village HARDING

County LINCOLN

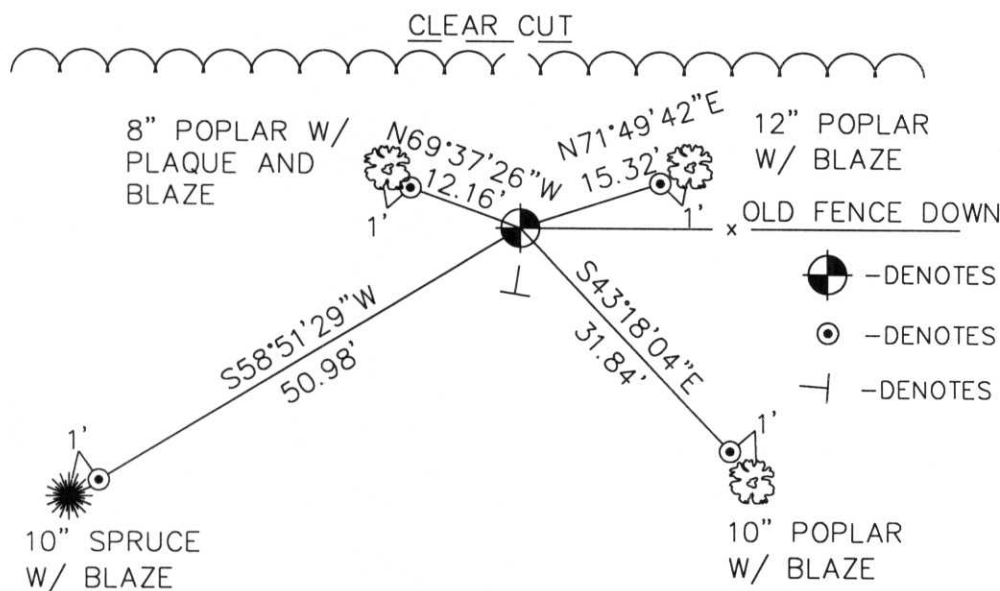


Section 26

(b)(f)(g)(h) Description of monument found at this corner and if it was accepted, state all evidence (material, testimonial, occupational, plats, records, other monuments) used as a basis for accepting. If not accepted or if nothing was found, state evidence used as basis for establishing location. If reestablished through lost corner proportionate methods, indicate all monuments, distances and directions used to establish.

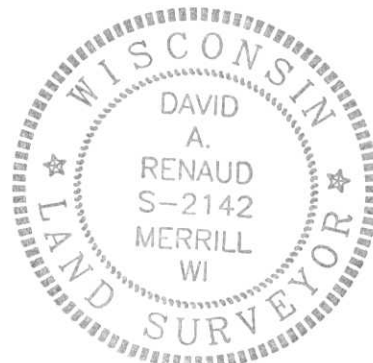
I FOUND AN ANCIENT FENCE LINE RUNNING TO THE EAST FROM THE APPROXIMATE LOCATION OF THE CORNER. I HELD THIS FENCE LINE, FOR THE NORTH-SOUTH LOCATION OF THE CORNER, AND A STRAIGHT LINE BETWEEN SECTION CORNERS 1/2 MILE NORTH AND 1/2 MILE SOUTH OF THIS CORNER AS THE BEST EVIDENCE OF THE ORIGINAL LOCATION OF THIS CORNER.

(c)(d)(e) Plan view of corner with ties to at least 4 witness monuments. If in disagreement with previously established corner, show the distances between the two corners and also indicate the ties to the disputed corner.



RECEIVED AT LINCOLN COUNTY  
COURTHOUSE THIS 22nd DAY  
OF June 19 99  
*Pat. Priske*  
LAND INFORMATION OFFICE

- ⊙ - DENOTES SET MONUMENT
- ⊙ - DENOTES SET 30" REBAR WITH CAP
- ⊥ - DENOTES VINYL POST



(i) I, DAVID A. RENAUD, WI R.L.S. S-2142  
certify that the corner location on this record was determined by me or under my direction and control and that this U.S. Public Land Survey Monument Record is correct and complete to the best of my knowledge and belief.

David A. Renaud 6-2-99  
Signature Date

Index No. 5-17