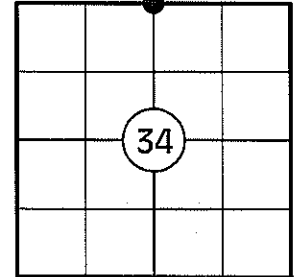


U.S. PUBLIC LAND SURVEY MONUMENT RECORD

NOTE: THIS FORM IS INTENDED AND DESIGNED TO FULFILL ALL REQUIREMENTS OF WISCONSIN ADMINISTRATIVE CODE CHAPTER A-E 7.08 U.S. PUBLIC LAND SURVEY MONUMENT RECORD (3) (a)(b)(c)(d)(e)(f)(g)(h)(i). AN ADDITIONAL SHEET MAY BE ADDED IF NECESSARY TO CONFIRM WITH SAID REQUIREMENTS.

(a) CORNER LOCATION:

N 1/4 CORNER OF SECTION 34
 TOWNSHIP 32 NORTH
 RANGE 5 EAST
 TOWN OF HARDING
 COUNTY OF LINCOLN



(b) HISTORY OF ORIGINAL CORNER:

ORIGINAL SURVEYOR: RICHARD O. CHANEY
 DATE OF SURVEY: NOVEMBER, 1852

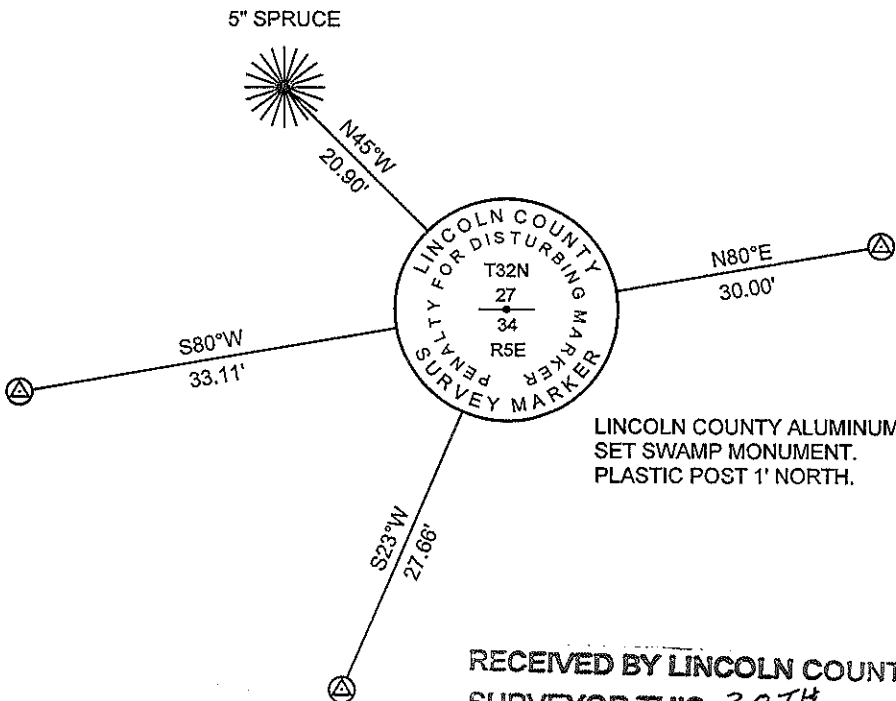
ORIGINAL BEARING TREES: 5" TAMARACK - N3°E, 7 LKS
 6" TAMARACK- S34°E, 112 LKS

(f)(g)(h) DESCRIPTION OF MONUMENT FOUND AT THIS CORNER AND IF IT WAS ACCEPTED STATE ALL EVIDENCE (MATERIAL, TESTIMONIAL, OCCUPATIONAL, PLATS, RECORDS, OTHER MONUMENTS) USED AS A BASIS FOR ESTABLISHING LOCATION. IF REESTABLISHING THROUGH LOST CORNER PROPORTIONATE METHODS, INDICATE ALL MONUMENTS, DISTANCES, AND DIRECTIONS USED TO ESTABLISH. INDICATE TYPE OF MONUMENT AND SIGN POST FOUND OR SET.

1852: RICHARD O. CHANEY SET THE ORIGINAL 1/4 CORNER POST.

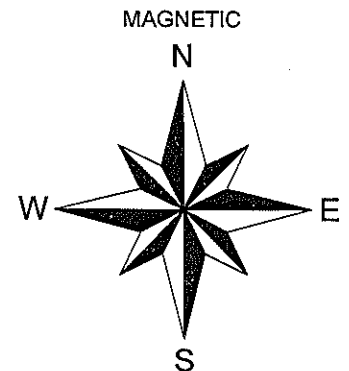
11/11/2010: FOUND NO EVIDENCE OF THE ORIGINAL CORNER. I POSITIONED CORNER BY SINGLE PROPORTION USING THE SECTION CORNERS TO THE EAST AND WEST. I REFERENCED THE CORNER AS SHOWN BELOW.

(c)(d)(e) PLAN VIEW OF CORNER WITH TIES TO AT LEAST FOUR WITNESSES. IF IN DISAGREEMENT WITH PREVIOUSLY ESTABLISHED CORNER, SHOW THE DISTANCES BETWEEN THE TWO CORNERS AND ALSO INDICATE THE TIE TO THE DISPUTED CORNER.



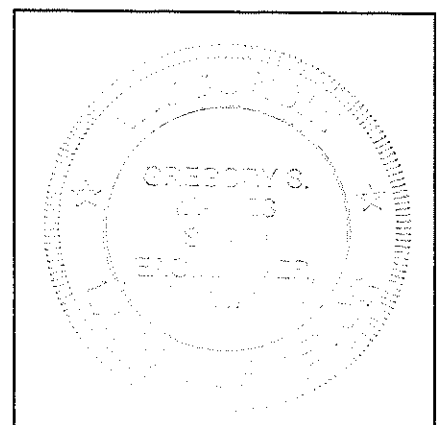
LINCOLN COUNTY ALUMINUM SET SWAMP MONUMENT. PLASTIC POST 1' NORTH.

⊗ 3/4" DIA. CAPPED REBAR SET



NOT TO SCALE
 DISTANCES TO BT'S ARE TO NAIL IN SIDE

RECEIVED BY LINCOLN COUNTY SURVEYOR THIS 30TH DAY OF December 20 10
Tony Dahl
 COUNTY SURVEYOR



INDEX NO. U-15

I GREGORY S. MAINES, REGISTERED LAND SURVEYOR NO. 2729, HEREBY CERTIFY THAT THE CORNER LOCATION ON THIS RECORD WAS REFERENCED BY ME OR UNDER MY DIRECTION AND CONTROL AND THAT THIS U.S. PUBLIC LAND SURVEY MONUMENT RECORD IS COMPLETE TO THE BEST OF MY KNOWLEDGE AND BELIEF.

Gregory S. Maines 12/29/10
 SIGNATURE

**NORTH 1/4 CORNER OF SECTION 34, T32N, R5E
LINCOLN COUNTY SWAMP MONUMENT SET**



FACING NORTH



FACING SOUTH



FACING EAST



FACING WEST

