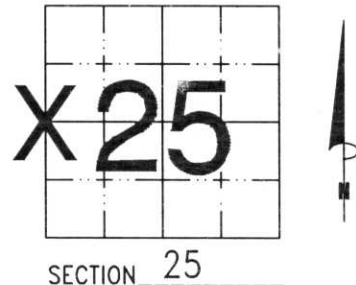


U.S. PUBLIC LAND SURVEY MONUMENT RECORD

NOTE: THIS FORM IS INTENDED AND DESIGNED TO FULFILL ALL REQUIREMENTS OF WISCONSIN ADMINISTRATIVE CODE, CHAPTER A-E 7.08 U.S. PUBLIC LAND SURVEY MONUMENT RECORD (3) (a) (b) (c) (d) (e) (f) (g) (h) (i). AN ADDITIONAL SHEET MAY BE ADDED IF NECESSARY TO CONFORM WITH SAID REQUIREMENTS.

(a) CORNER LOCATION: TOWNSHIP 32 NORTH
 RANGE 5 EAST/WEST
 TOWN/CITY/VILLAGE HARDING
 COUNTY LINCOLN

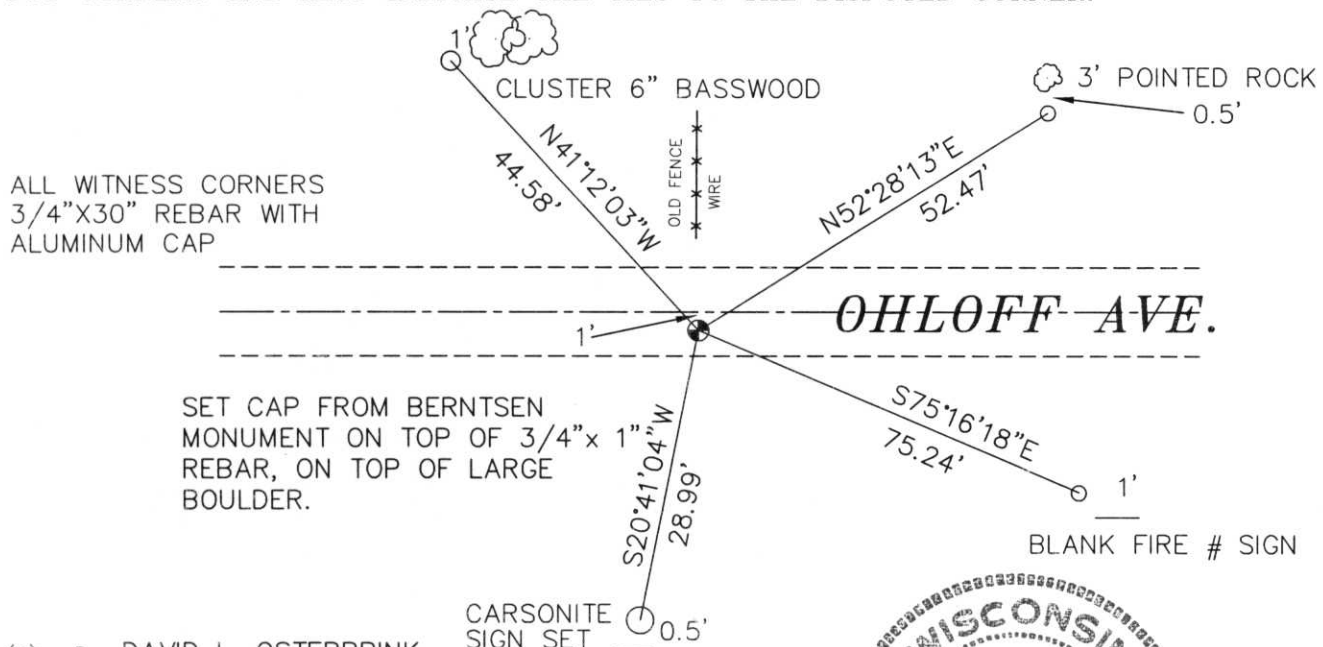


SECTION 25

(b) (f) (g) (h) DESCRIPTION OF MONUMENT FOUND AT THIS CORNER AND IF IT WAS ACCEPTED, STATE ALL EVIDENCE (MATERIAL, TESTIMONIAL, OCCUPATIONAL, PLATS, RECORDS, OTHER MONUMENTS) USED AS BASIS FOR ACCEPTING. IF NOT ACCEPTED OR IF NOTHING WAS FOUND, STATE EVIDENCE USED AS BASIS FOR ESTABLISHING LOCATION. IF REESTABLISHED THROUGH LOST CORNER PROPORTIONATE METHODS, INDICATE ALL MONUMENTS, DISTANCES AND DIRECTIONS USED TO ESTABLISH. INDICATE TYPE OF MONUMENT FOUND OR SET AND SIGN POST.

THIS CORNER WAS USED BY OFFERMAN IN 1971, AND TIED TO ON CSM VOL. 2, PG. 62. I COULD FIND NO RECORD THAT IT WAS DUG FOR. WE DUG UP LARGE AREA IN ROAD. BELOW SAND LIFT, SOILS LOOKED UNDISTURBED. DUG DOWN TO 4 FEET INTO NATURAL SOILS. FOUND NO EVIDENCE OF CORNER. AREA IS IN CUT AREA FOR ROAD. USING DISTANCE ON CSM VOL. 2, PG. 62 (TLUSTY) I SET LINCOLN COUNTY BERNTSEN CAP. THERE WAS A LARGE BOULDER WHERE CORNER WAS TO BE SET. PUT CAP ON 3/4" x 1" REBAR ON TOP OF BOULDER. HAD ROLLED BOULDER AROUND WITH BACKHOE, AND ENDED UP LEAVING IT RIGHT WHERE CORNER FELL. CORNER MATCHED OLD FENCE LINE GOING TO NORTH, AND CHECKED WELL WITH NW CORNER OF SECTION 25. TIED OUT CORNER.

(c) (d) (e) PLAN VIEW OF CORNER WITH TIES TO AT LEAST 4 WITNESS MONUMENTS. IF IN DISAGREEMENT WITH PREVIOUSLY ESTABLISHED CORNER, SHOW THE DISTANCES BETWEEN THE TWO CORNERS AND ALSO INDICATE THE TIES TO THE DISPUTED CORNER.



RECEIVED AT LINCOLN COUNTY COURTHOUSE THIS 14th DAY OF Nov 19 98
Pat Mueller

(i) I, DAVID L. OSTERBRINK
 (TYPE OR PRINT NAME) CERTIFY THAT THE CORNER LOCATION ON THIS RECORD WAS DETERMINED BY ME OR UNDER MY DIRECTION AND CONTROL AND THAT THIS U.S. PUBLIC LAND SURVEY MONUMENT RECORD IS CORRECT AND COMPLETE TO THE BEST OF MY KNOWLEDGE AND BELIEF.

David L. Osterbrink 11-10-98
 SIGNATURE DATE



INDEX NO. 5-21