

CERTIFIED LAND CORNER RESTORATION

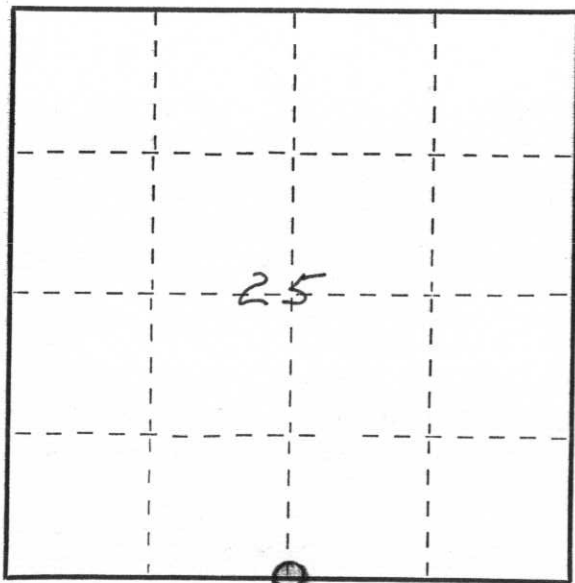
Index No. U-23

State of Wisconsin }
County of Lincoln } ss.

I Duane A. Gau, do hereby certify that on the 26th day of September, 1979, I found evidence of the S 1/4 corner of Section 25 Township 32 North, Range 5E, Fourth, Principal Meridian, as described hereon; and that from this evidence I established a new monument and accessories as described hereon to perpetuate the original location of this corner.

Resident witnesses:

.....
.....
.....



○ = Corner monument restored.

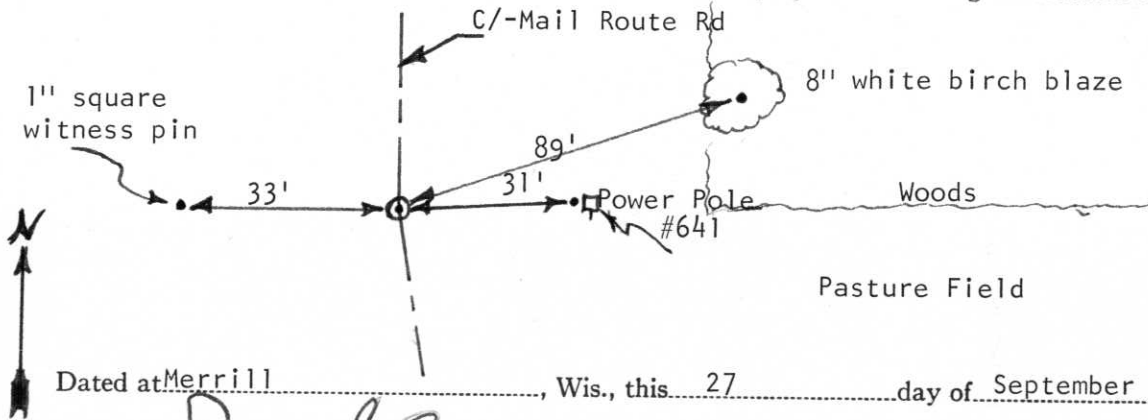
History of original corner establishment:

2" Iron pipe set by Wisconsin Public Service Corp.

Description of corner evidence found:

Located 2" pipe, 4" under gravel surface of road.

Description of monument and accessories I established to perpetuate the original location of this corner.



NOTE: Set witness corners for road construction and reset S1/4 corner.

Dated at Merrill, Wis., this 27 day of September, 1979.

Signature Duane A. Gau Title Lincoln County Highway, Comm. Registration No.
(County Surveyor, Registered Land Surveyor, or other duly authorized official)

Office of Register of Deeds, County of, I hereby certify that the within instrument was filed in this office for record on the day of, 19..... at o'clock M..

.....
(Register of Deeds)

By Deputy