

U.S. PUBLIC LAND SURVEY MONUMENT RECORD

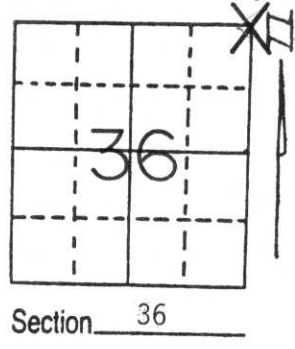
Note: This form is intended and designed to fulfill all requirements of Wisconsin Administrative Code, Chapter A-E 5.02, U.S. Public Land Survey Monument Record (3) (a) (b) (c) (d) (e) (f) (g) (h) (i). An additional sheet may be added if necessary to conform with said requirements.

(a) Corner location: Township 32 North

Range 5 East

Town/City/Village HARDING

County LINCOLN

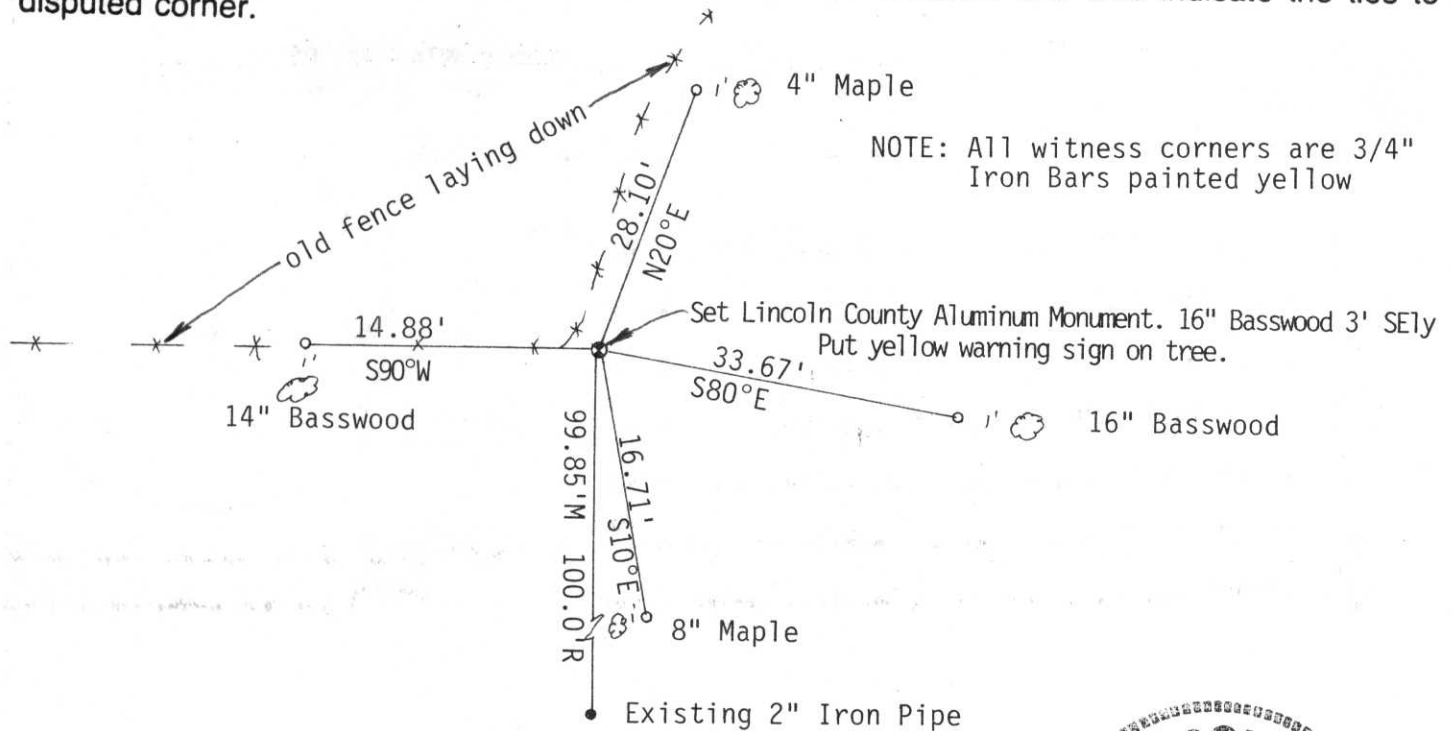


(b) (f) (g) (h) Description of monument found at this corner and if it was accepted, state all evidence (material, testimonial, occupational, plats, records, other monuments) used as a basis for accepting. If not accepted or if nothing was found, state evidence used as basis for establishing location. If reestablished through lost corner proportionate methods, indicate all monuments, distances and directions used to establish.

Alexander Lake Plat calls for 2" Iron Pipe as Section Corner. Traversed to area, found existing 1 1/2" Iron Pipe, 14" above surface, leaning over. Removed Iron, replaced with Lincoln County Aluminum Monument. Set out 3/4" Iron Bars as witness corners, painted yellow. Had difficult time verifying corner location. Alexander Road is built South-westerly of road right-of-way. Found various lot irons, and distances checked for corner location. Distances in Section breakdown were favorable for corner location also.

SEE BACK FOR SECTION BREAK DOWN

(c) (d) (e) Plan view of corner with ties to at least 4 witness monuments. If in disagreement with previously established corner, show the distances between the two corners and also indicate the ties to the disputed corner.



(i) I, David L. Osterbrink RLS No. S-2014

(type or print name) certify that the corner location on this record was determined by me or under my direction and control and that this U.S. Public Land Survey Monument Record is correct and complete to the best of my knowledge and belief.

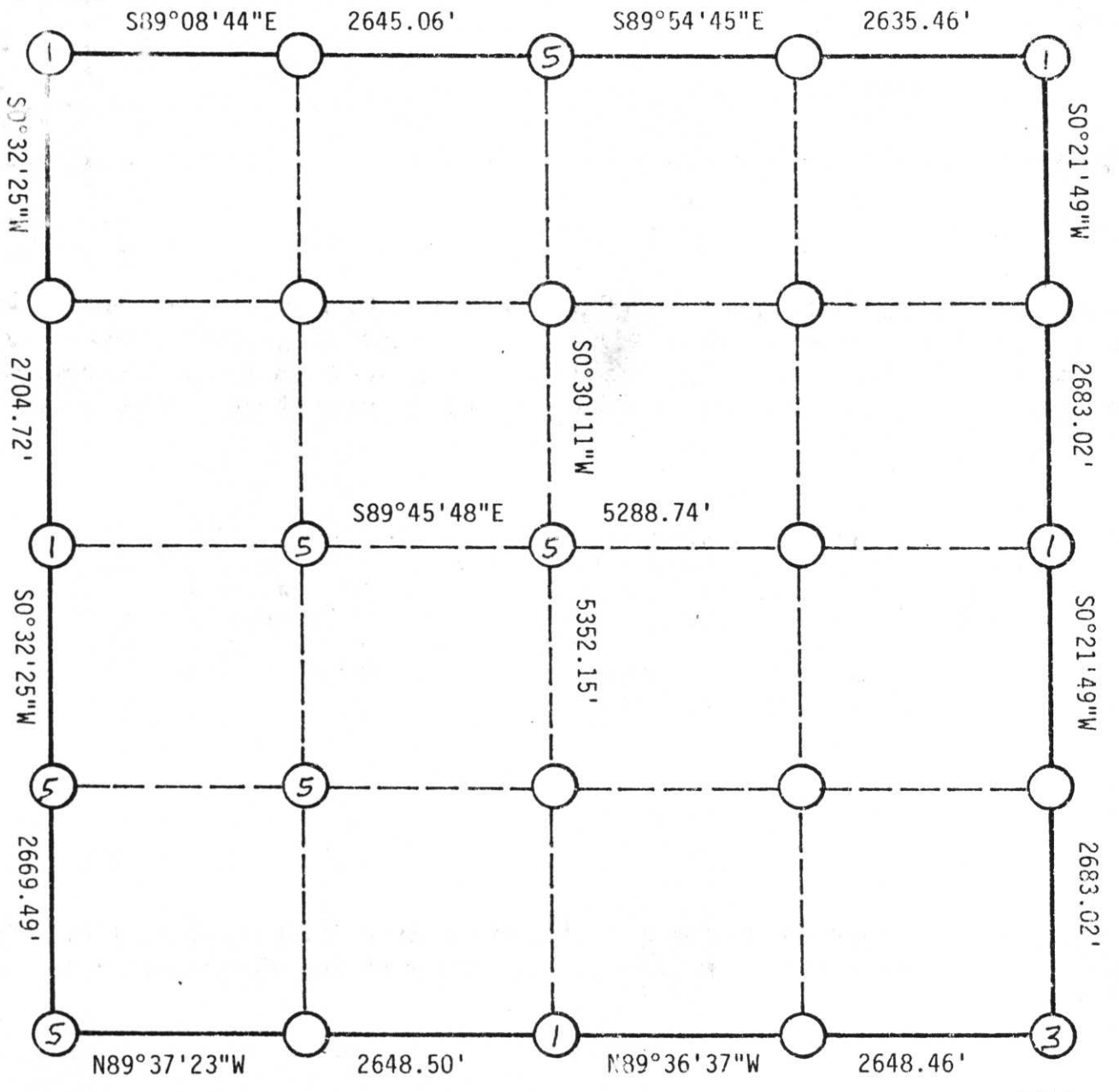
David L. Osterbrink 12-15-92
Signature Date



Index No. U-25

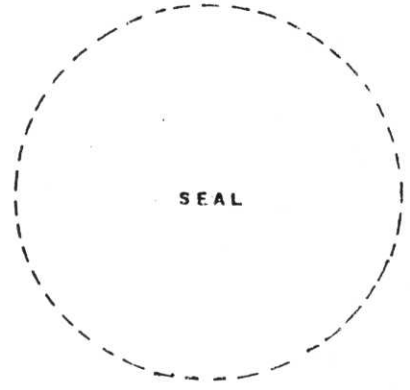
HARDING
CITY VILLAGE TOWN

NOTE: USE REVERSE SIDE FOR EXPLANATORY REMARKS & SKETCHES.



MONUMENT LEGEND : (Specify material and size)

- ① CAST METAL Lincoln County Aluminum Monument
- ② CONCRETE _____
- ③ STONE Granite
- ④ IRON ROD/BAR _____
- ⑤ IRON PIPE 2"
- ⑥ SPIKE / NAIL _____
- ⑦ OTHER _____



SIGNED: _____
DATE: _____

RECEIVED AT LINCOLN COUNTY
 COURTHOUSE THIS 23rd DAY
 OF Dec 19 92
Pat Priebe
 TAX DEPARTMENT OFFICE



11 2:22 PM



11 2:25 PM



11 2:23 PM