

U.S. PUBLIC LAND SURVEY MONUMENT RECORD

NOTE: THIS FORM IS INTENDED AND DESIGNED TO FULFILL ALL REQUIREMENTS OF WISCONSIN ADMINISTRATIVE CODE, CHAPTER A-E 7.08 U.S. PUBLIC LAND SURVEY MONUMENT RECORD (3) (a) (b) (c) (d) (e) (f) (g) (h) (i). AN ADDITIONAL SHEET MAY BE ADDED IF NECESSARY TO CONFORM WITH SAID REQUIREMENTS.

(a) CORNER LOCATION: TOWNSHIP 32 NORTH
 RANGE 5 EAST/WEST
 TOWN/CITY/VILLAGE HARDING
 COUNTY LINCOLN



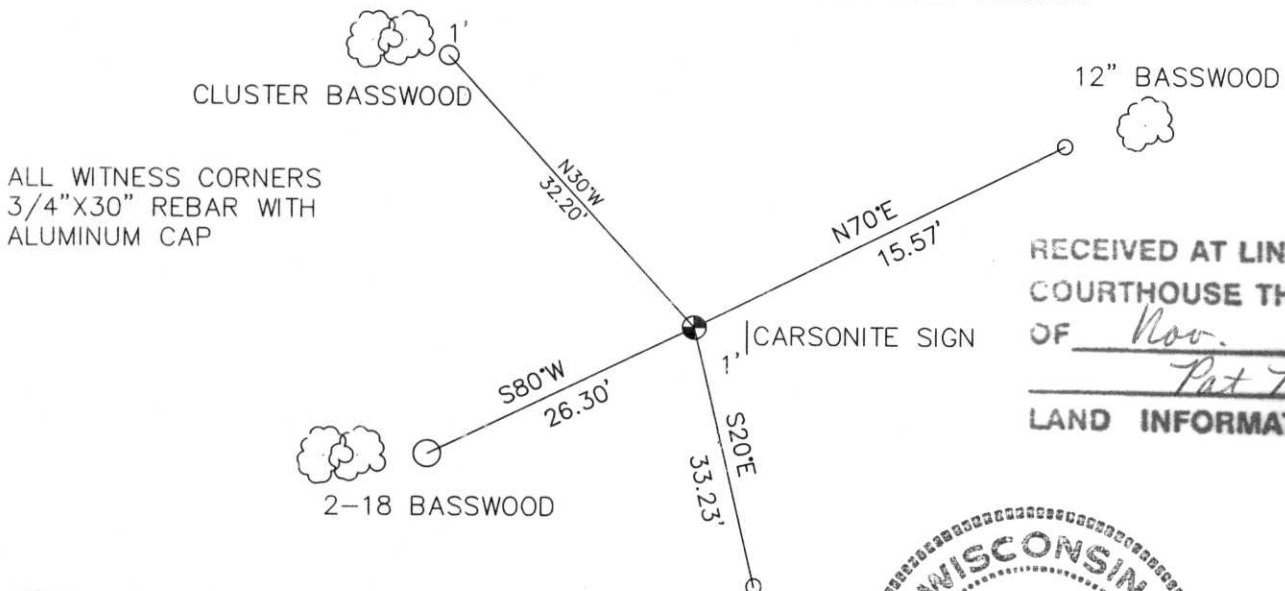
SECTION 25

(b) (f) (g) (h) DESCRIPTION OF MONUMENT FOUND AT THIS CORNER AND IF IT WAS ACCEPTED, STATE ALL EVIDENCE (MATERIAL, TESTIMONIAL, OCCUPATIONAL, PLATS, RECORDS, OTHER MONUMENTS) USED AS BASIS FOR ACCEPTING. IF NOT ACCEPTED OR IF NOTHING WAS FOUND, STATE EVIDENCE USED AS BASIS FOR ESTABLISHING LOCATION. IF REESTABLISHED THROUGH LOST CORNER PROPORTIONATE METHODS, INDICATE ALL MONUMENTS, DISTANCES AND DIRECTIONS USED TO ESTABLISH. INDICATE TYPE OF MONUMENT FOUND OR SET AND SIGN POST.

THIS CORNER WAS FOUND BY OFFERMAN / TLUSTY AROUND 1971. THEY USED IT FOR CSM MAP # 105 & 332. CHARLES REINHARDT TOOK ME TO THIS CORNER AND SAID THAT SCHULZ, ADJACENT LAND OWNER HAD SHOWED IT TO HIM, CALLING IT THE SECTION CORNER. USING GPS EQUIPMENT (GIS GRADE 1 METER ACCURACY), I FOUND THIS PIPE TO BE THE CORNER USED BY OFFERMAN / TLUSTY. I REMOVED THE 4 FOOT LONG, 1-1/4" IRON PIPE WITH OLD STEERING GEAR ON END. SET LINCOLN COUNTY BERNTSEN MONUMENT. SET OUT 4 - 3/4" x 30" REBAR WITH ALUMINUM CAPS AS WITNESS CORNERS.

FOUND NO OTHER EVIDENCE TO REFUTE THIS CORNER. DIMENSIONS LOOKED GOOD.

(c) (d) (e) PLAN VIEW OF CORNER WITH TIES TO AT LEAST 4 WITNESS MONUMENTS. IF IN DISAGREEMENT WITH PREVIOUSLY ESTABLISHED CORNER, SHOW THE DISTANCES BETWEEN THE TWO CORNERS AND ALSO INDICATE THE TIES TO THE DISPUTED CORNER.



ALL WITNESS CORNERS
 3/4"X30" REBAR WITH
 ALUMINUM CAP

RECEIVED AT LINCOLN COUNTY
 COURTHOUSE THIS 14th DAY
 OF Nov. 19 98
Pat Priske
 LAND INFORMATION OFFICE



(i) I, DAVID L. OSTERBRINK
 (TYPE OR PRINT NAME) CERTIFY THAT THE CORNER
 LOCATION ON THIS RECORD WAS DETERMINED BY ME
 OR UNDER MY DIRECTION AND CONTROL AND THAT
 THIS U.S. PUBLIC LAND SURVEY MONUMENT RECORD
 IS CORRECT AND COMPLETE TO THE BEST OF MY
 KNOWLEDGE AND BELIEF.

David L. Osterbrink 11-10-98
 SIGNATURE DATE

STAMP

INDEX NO. 8-23









