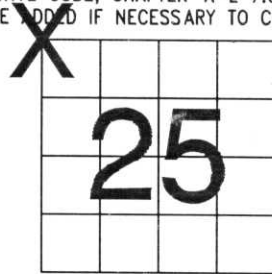


U.S. PUBLIC LAND SURVEY MONUMENT RECORD

NOTE: THIS FORM IS INTENDED AND DESIGNED TO FULFILL ALL REQUIREMENTS OF WISCONSIN ADMINISTRATIVE CODE, CHAPTER A-E 7.08 U.S. PUBLIC LAND SURVEY MONUMENT RECORD (3) (a) (b) (c) (d) (e) (f) (g) (h) (i). AN ADDITIONAL SHEET MAY BE ADDED IF NECESSARY TO CONFORM WITH SAID REQUIREMENTS.

(a) CORNER LOCATION: TOWNSHIP 32 NORTH
 RANGE 5 EAST/WEST
 TOWN/CITY/VILLAGE HARDING
 COUNTY LINCOLN



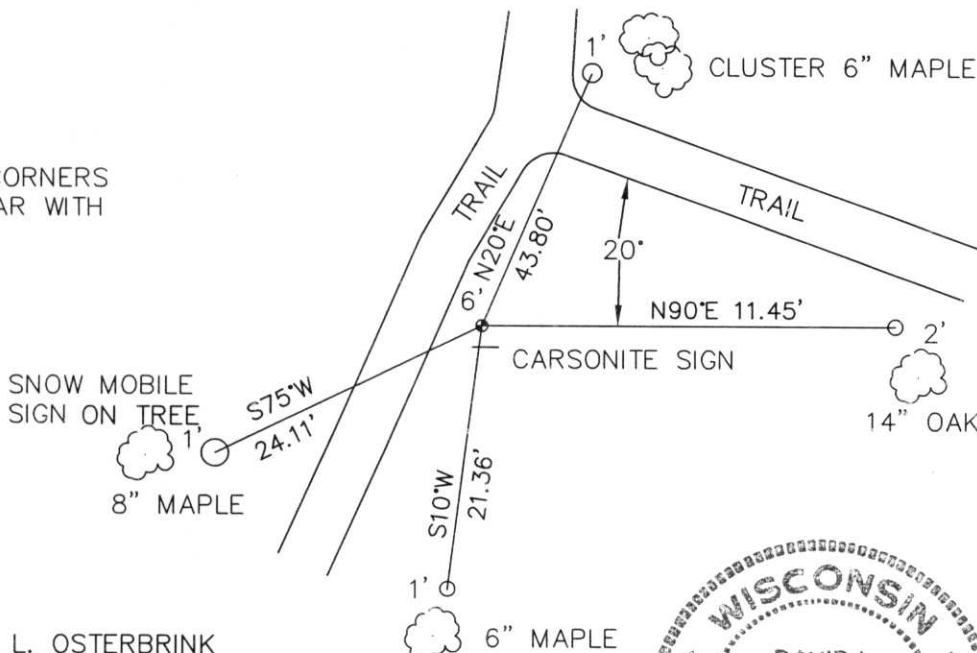
SECTION 25

(b) (f) (g) (h) DESCRIPTION OF MONUMENT FOUND AT THIS CORNER AND IF IT WAS ACCEPTED, STATE ALL EVIDENCE (MATERIAL, TESTIMONIAL, OCCUPATIONAL, PLATS, RECORDS, OTHER MONUMENTS) USED AS BASIS FOR ACCEPTING. IF NOT ACCEPTED OR IF NOTHING WAS FOUND, STATE EVIDENCE USED AS BASIS FOR ESTABLISHING LOCATION. IF REESTABLISHED THROUGH LOST CORNER PROPORTIONATE METHODS, INDICATE ALL MONUMENTS, DISTANCES AND DIRECTIONS USED TO ESTABLISH. INDICATE TYPE OF MONUMENT FOUND OR SET AND SIGN POST.

THIS CORNER WAS FOUND BY OFFERMAN AND SHOWN ON A MAP IN 1971. CHARLES REINHARDT KNEW OF THIS CORNER, AND CONSIDERED IT THE SECTION CORNER. USING GPS EQUIPMENT (GIS GRADE 1 METER ACCURACY) I FOUND IT TO MATCH THE CORNER / DISTANCES SHOWN ON OFFERMANS MAP. THE CORNER WAS A 3/4" x 40" IRON PIPE, POINTED ON ONE END. THERE WAS RIBBON AROUND THE CORNER, AND IT WAS QUITE VISIBLE THAT ADJACENT LAND OWNERS HAVE BEEN USING THIS PIPE AS PROPERTY CORNER BY THE LOGGING ACTIVITY. SET LINCOLN COUNTY BERNTSEN MONUMENT, PUT OUT 4 - 3/4" x 30" REBAR WITH ALUMINUM CAPS AS WITNESS CORNERS.

(c) (d) (e) PLAN VIEW OF CORNER WITH TIES TO AT LEAST 4 WITNESS MONUMENTS. IF IN DISAGREEMENT WITH PREVIOUSLY ESTABLISHED CORNER, SHOW THE DISTANCES BETWEEN THE TWO CORNERS AND ALSO INDICATE THE TIES TO THE DISPUTED CORNER.

ALL WITNESS CORNERS
 3/4"X30" REBAR WITH
 ALUMINUM CAP



RECEIVED AT LINCOLN COUNTY
 COURTHOUSE THIS 11th DAY
 OF Nov 19 98
Pat Pender
 LAND INFORMATION OFFICE

(i) I, DAVID L. OSTERBRINK
 (TYPE OR PRINT NAME) CERTIFY THAT THE CORNER
 LOCATION ON THIS RECORD WAS DETERMINED BY ME
 OR UNDER MY DIRECTION AND CONTROL AND THAT
 THIS U.S. PUBLIC LAND SURVEY MONUMENT RECORD
 IS CORRECT AND COMPLETE TO THE BEST OF MY
 KNOWLEDGE AND BELIEF.

David L. Osterbrink
 SIGNATURE 11-10-98
 DATE



INDEX NO. 0-21











POSTEL