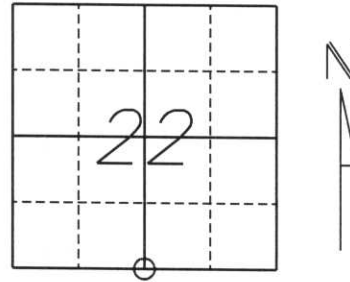


U.S. PUBLIC LAND SURVEY MONUMENT RECORD

Note: This form is intended and designed to fulfill all requirements of Wisconsin Administrative Code, Chapter A-E 5.02, U.S. Public Land Survey Monument Record (3) (a) (b) (c) (d) (e) (f) (g) (h) (i). An additional sheet may be added if necessary to conform with said requirements.

(a) Corner location: Township 32 North
 Range 5 East
 Town/City/Village HARDING
 County Lincoln



Section 22

(b) (f) (g) (h) Description of monument found at this corner and if it was accepted, state all evidence (material, testimonial, occupational, plats, records, other monuments) used as a basis for accepting. If not accepted or if nothing was found, state evidence used as a basis for establishing location. If reestablished through lost corner proportionate methods, indicate all monuments, distances and directions used to establish.

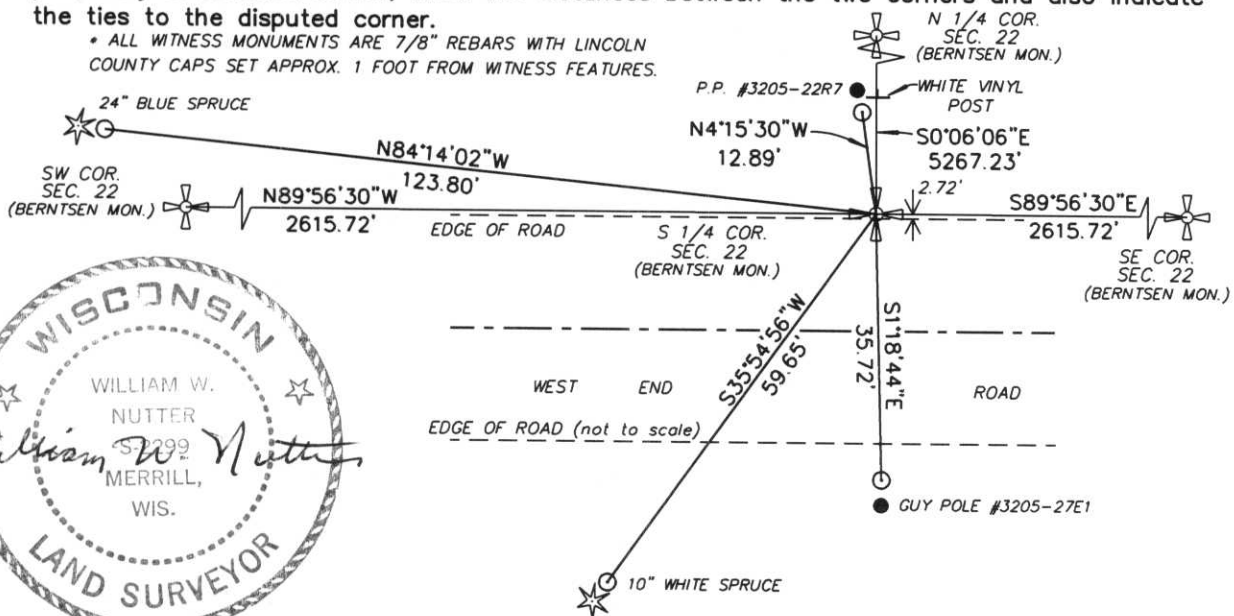
ORIGINAL SURVEY UNKNOWN

FOUND NO EVIDENCE OF A CORNER. SET BERNTSEN MONUMENT AT MIDPOINT BETWEEN THE SOUTHEAST AND SOUTHWEST CORNERS. SET (4) 7/8" REBARS WITH LINCOLN COUNTY CAPS AS WITNESS MONUMENTS TO CORNER.

RECEIVED AT LINCOLN COUNTY
 COURTHOUSE THIS 14th DAY
 OF Nov 2000
Tony Dallman
 LAND INFORMATION OFFICE

(c) (d) (e) Plan view of corner with ties to at least 4 witness monuments. If in disagreement with previously established corner, show the distances between the two corners and also indicate the ties to the disputed corner.

** ALL WITNESS MONUMENTS ARE 7/8" REBARS WITH LINCOLN COUNTY CAPS SET APPROX. 1 FOOT FROM WITNESS FEATURES.*



(i) I, William W. Nutter RLS, S-2299
 (type or print name) certify that the corner location on this record was determined by me or under my direction and control and that this U.S. Public Land Survey Monument Record is correct and complete to the best of my knowledge and belief.

William W. Nutter Signature 11-8-2000 Date

Index No. Q-15









