

Stock No. 26273

U.S. PUBLIC LAND SURVEY MONUMENT RECORD

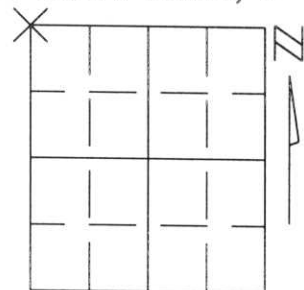
Note: This form is intended and designed to fulfill all requirements of Wisconsin Administrative Code, Chapter A-E 5.02, U.S. Public Land Survey Monument Record (3)(a)(b)(c)(d)(e)(f)(g)(h)(i). An additional sheet may be added if necessary to conform with said requirements.

(a) Corner location: Township 32 North

Range 5 East

Town/City/Village HARDING

County LINCOLN

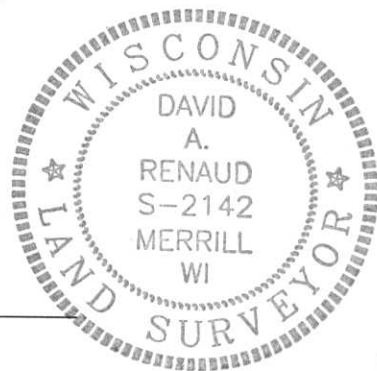
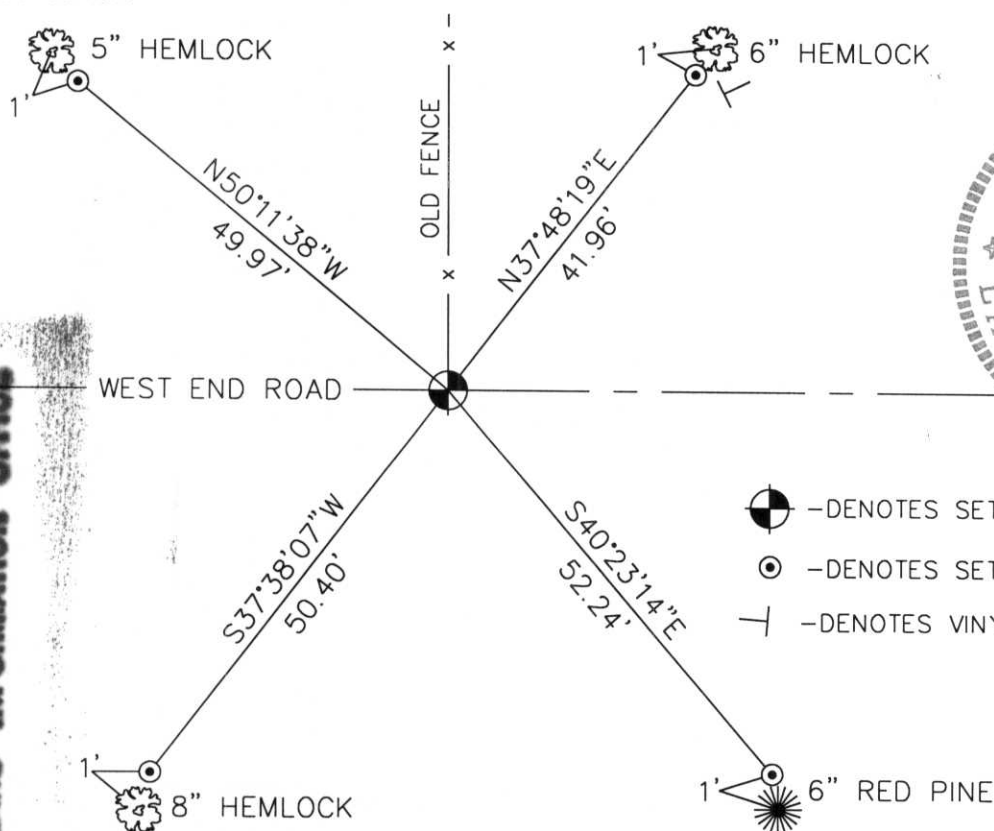


Section 26

(b)(f)(g)(h) Description of monument found at this corner and if it was accepted, state all evidence (material, testimonial, occupational, plats, records, other monuments) used as a basis for accepting. If not accepted or if nothing was found, state evidence used as basis for establishing location. If reestablished through lost corner proportionate methods, indicate all monuments, distances and directions used to establish.

I FOUND A 1" IRON PIPE IN THE CENTER OF WEST END ROAD AND AN ANCIENT FENCE LINE 15'± WEST OF THIS IRON PIPE AND EXTENDING TO THE NORTH. THE DISTANCE FROM THE ESTABLISHED AND ACCEPTED NORTH 1/4 CORNER OF SECTION 26, 1/2 MILE TO THE EAST, TO THE ANCIENT FENCE FIT QUITE REASONABLY WITH THE ORIGINAL P.L.S. SURVEY. I ACCEPTED THE CENTER OF WEST END ROAD AND THIS FENCE AS THE BEST EVIDENCE OF THE ORIGINAL LOCATION OF THE CORNER.

(c)(d)(e) Plan view of corner with ties to at least 4 witness monuments. If in disagreement with previously established corner, show the distances between the two corners and also indicate the ties to the disputed corner.

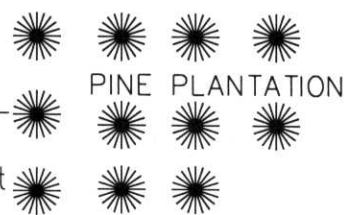


- DENOTES SET BERNSTEIN MONUMENT
- DENOTES SET 1"x30" REBAR
- DENOTES VINYL POST

RECEIVED AT LINCOLN COUNTY COURTHOUSE THIS 22nd DAY OF June 19 99
 Land Information Office

(i) I, DAVID A. RENAUD, WI R.L.S. S-2142 certify that the corner location on this record was determined by me or under my direction and control and that this U.S. Public Land Survey Monument Record is correct and complete to the best of my knowledge and belief.

David A. Renaud 6-2-99
Signature Date



Index No. 8-17

NORTHEAST CORNER OF SECTION 27, T33N, R05E

6" SQ. GRANITE MONUMENT FOUND



FACING NORTH



FACING SOUTH



FACING EAST



FACING WEST

