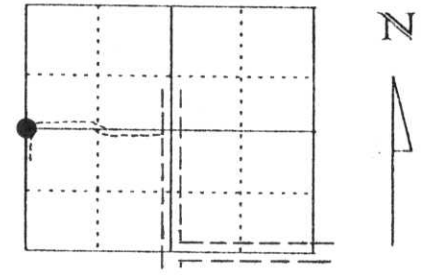


U.S. PUBLIC LAND SURVEY MONUMENT RECORD

Note: This form is intended and designed to fulfill all requirements of Wisconsin Administrative Code, Chapter A-E 5.02, U.S. Public Land Survey Monument Record (3) (a) (b) (c) (d) (e) (f) (g) (h) (l). An additional sheet may be added if necessary to conform with said requirements.

(a) Corner location: Township 32 North
 Range 5 East
 Town/City/Village HARDING
 County Lincoln



Section 21

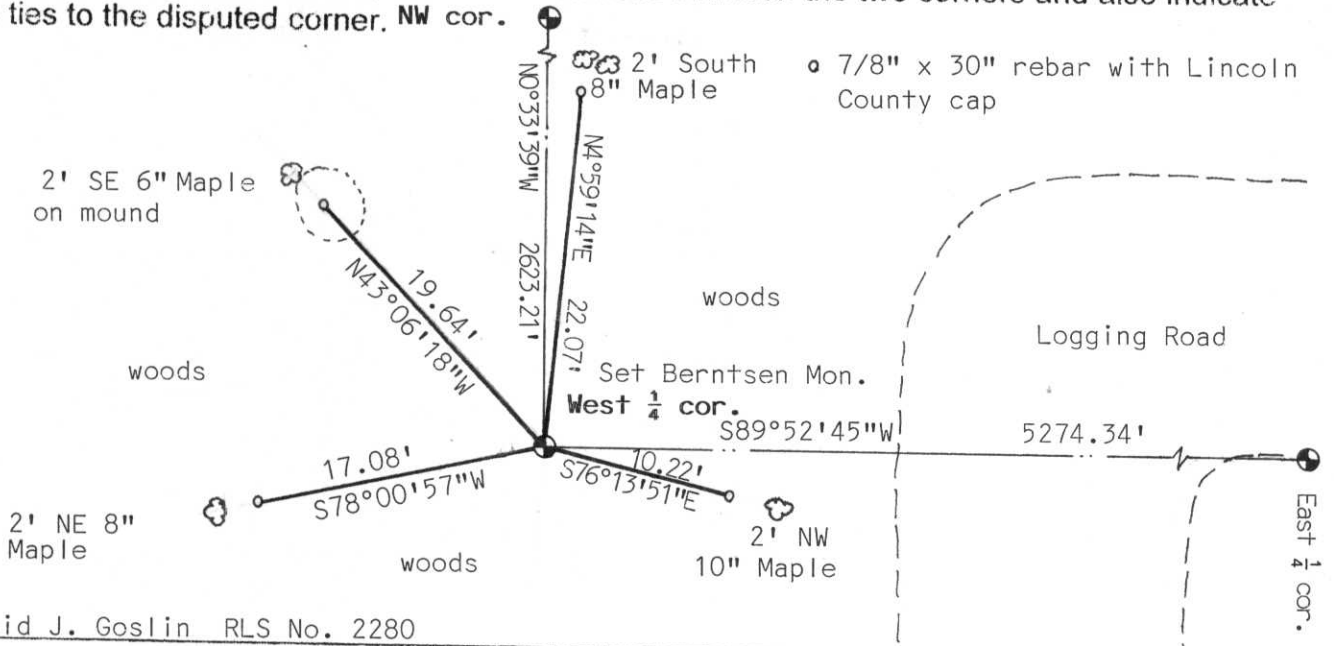
(b) (f) (g) (h) Description of monument found at this corner and if it was accepted, state all evidence (material, testimonial, occupational, plats, records, other monuments) used as a basis for accepting. If not accepted or if nothing was found, state evidence used as basis for establishing location. If reestablished through lost corner proportionate methods, indicate all monuments, distances and directions used to establish.

Traversed into corner location and found an old 3/4" x 36" iron pipe. This pipe was similar to a pipe we found, along with an old Survey wood post, at the North 1/4 corner of this Section. Holding this corner fit a fence line at the Center of Section running East from there. Accepted iron pipe as the correct corner and set a Lincoln County Berntsen Monument flush with the ground and set a orange carsonite survey post 0.5' west of corner.

Original corner wood post set by R. Chaney, Deputy Surveyor, in November of 1852.
 Ties set are as follows:
 Hemlock 20", N76°E, 36 links
 Hemlock 12", S87°W, 23 links

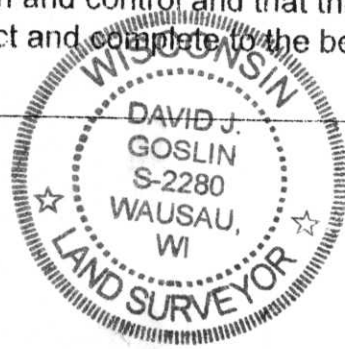
**RECEIVED AT LINCOLN COUNTY
 COURTHOUSE THIS 6th DAY
 OF Dec. 19 99
Pat Priebe
 LAND INFORMATION OFFICE**

(c) (d) (e) Plan view of corner with ties to at least 4 witness monuments. If in disagreement with previously established corner, show the distances between the two corners and also indicate the ties to the disputed corner. NW cor.



(l) I, David J. Goslin RLS No. 2280
 (type or print name) certify that the corner location on this record was determined by me or under my direction and control and that this U.S. Public Land Survey Monument Record is correct and complete to the best of my knowledge and belief.

David J. Goslin
 Signature



12-6-99
 Date

Index No. 0-9









