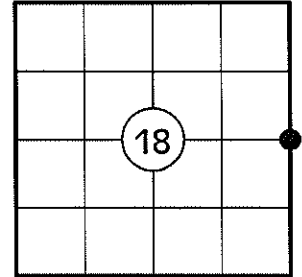


# U.S. PUBLIC LAND SURVEY MONUMENT RECORD

NOTE: THIS FORM IS INTENDED AND DESIGNED TO FULFILL ALL REQUIREMENTS OF WISCONSIN ADMINISTRATIVE CODE CHAPTER A-E 7.08 U.S. PUBLIC LAND SURVEY MONUMENT RECORD (3) (a)(b)(c)(d)(e)(f)(g)(h)(i). AN ADDITIONAL SHEET MAY BE ADDED IF NECESSARY TO CONFIRM WITH SAID REQUIREMENTS.

**(a) CORNER LOCATION:**

EAST 1/4 CORNER OF SECTION 18  
 TOWNSHIP 32 NORTH  
 RANGE 5 EAST  
 TOWN OF HARDING  
 COUNTY OF LINCOLN



**(b) HISTORY OF ORIGINAL CORNER:**

ORIGINAL SURVEYOR: RICHARD O. CHANEY  
 DATE OF SURVEY: NOVEMBER, 1852

ORIGINAL BEARING TREES: 16" HEMLOCK - S26°E, 24 LKS  
 15" HEMLOCK - N37°W, 12 LKS

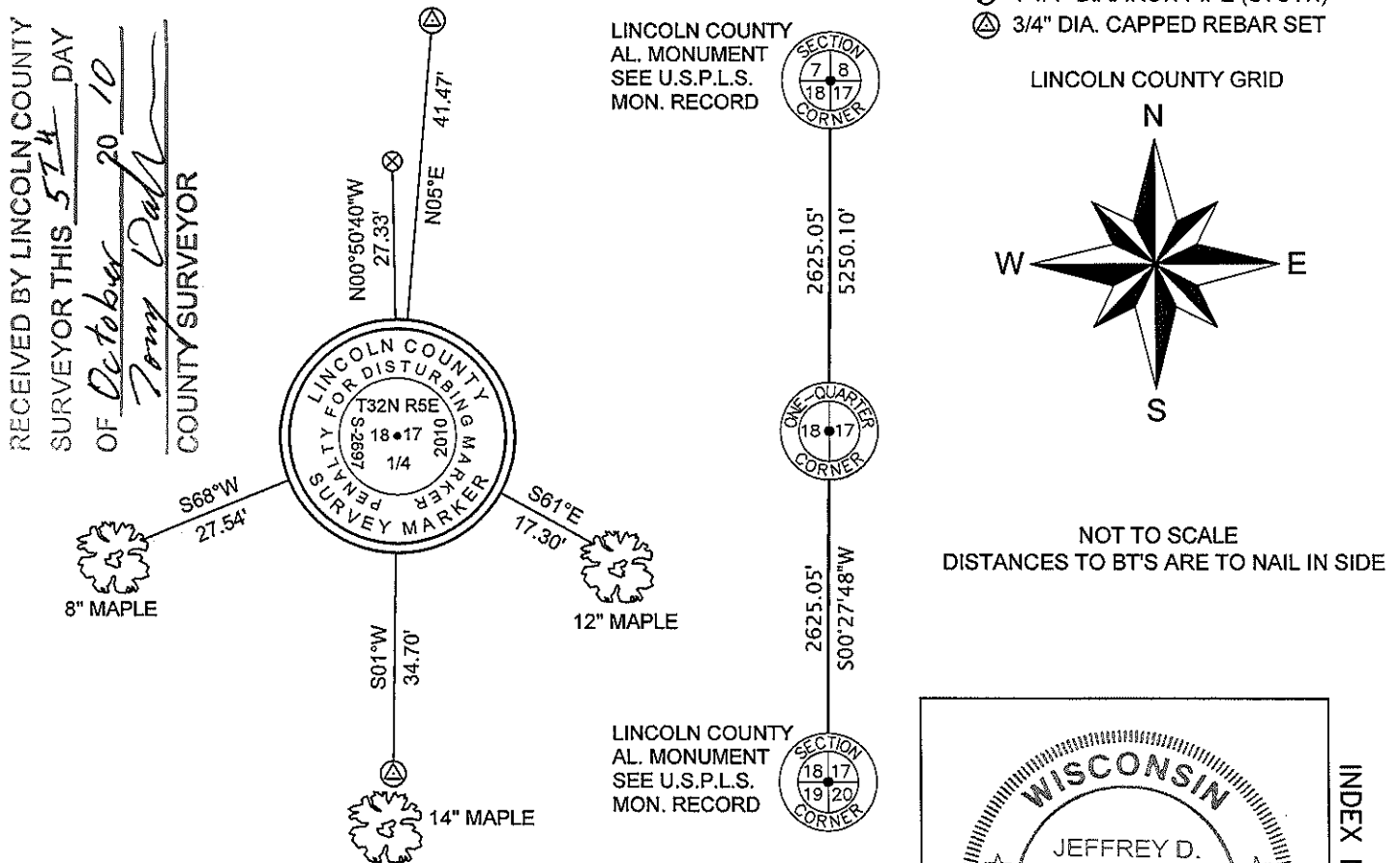
**(f)(g)(h) DESCRIPTION OF MONUMENT FOUND AT THIS CORNER AND IF IT WAS ACCEPTED STATE ALL EVIDENCE (MATERIAL, TESTIMONIAL, OCCUPATIONAL, PLATS, RECORDS, OTHER MONUMENTS) USED AS A BASIS FOR ESTABLISHING LOCATION. IF REESTABLISHING THROUGH LOST CORNER PROPORTIONATE METHODS, INDICATE ALL MONUMENTS, DISTANCES, AND DIRECTIONS USED TO ESTABLISH. INDICATE TYPE OF MONUMENT AND SIGN POST FOUND OR SET.**

1852: RICHARD O. CHANEY SET THE ORIGINAL 1/4 SECTION POST.

04/20/1983: WILLIAM H. STUTH, RLS, SET AN IRON PIPE AT THE PROPORTIONED 1/4 CORNER LOCATION DURING HIS SUBDIVISION OF SECTION 18. HE MADE TWO BEARING TREES: 7" H.M. - N26°E, 24.7' AND A 9" Y.B. - S0°, 19.0'.

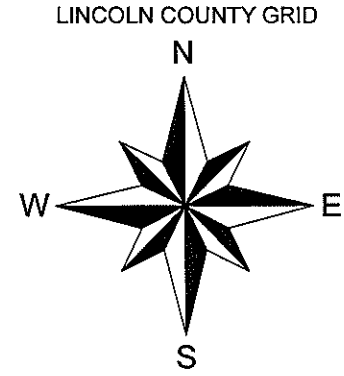
09/29/2010: I CHOSE NOT TO USE STUTH'S PIPE BECAUSE THE SECTION CORNERS TO THE NORTH AND SOUTH ARE NOT THE SAME AS WHAT HE USED FOR HIS PROPORTION. I SEARCHED THE AREA AND FOUND NO EVIDENCE OF THE ORIGINAL CORNER. I POSITIONED THE CORNER BY SINGLE PROPORTION BETWEEN THE SECTION CORNERS AS SHOWN BELOW. I SET A LINCOLN COUNTY ALUMINUM BERNSTEN BREAKAWAY MONUMENT, MADE TWO BEARING TREES, SET TWO 3/4" DIA. REBAR WITH ALUMINUM CAPS AS REFERENCE MONUMENTS AND SET A WHITE PLASTIC POST 1' NORTH.

**(c)(d)(e) PLAN VIEW OF CORNER WITH TIES TO AT LEAST FOUR WITNESSES. IF IN DISAGREEMENT WITH PREVIOUSLY ESTABLISHED CORNER, SHOW THE DISTANCES BETWEEN THE TWO CORNERS AND ALSO INDICATE THE TIE TO THE DISPUTED CORNER.**

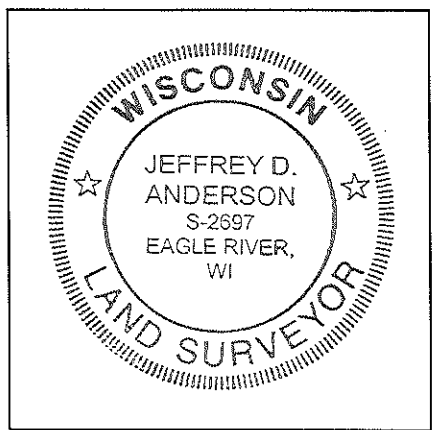


RECEIVED BY LINCOLN COUNTY SURVEYOR THIS 5<sup>th</sup> DAY OF October 20 10  
*Tommy Dahl*  
 COUNTY SURVEYOR

- ⊗ 1 1/4" DIA. IRON PIPE (STUTH)
- △ 3/4" DIA. CAPPED REBAR SET



NOT TO SCALE  
 DISTANCES TO BT'S ARE TO NAIL IN SIDE



I JEFFREY D. ANDERSON, REGISTERED LAND SURVEYOR NO. 2697, HEREBY CERTIFY THAT THE CORNER LOCATION ON THIS RECORD WAS REFERENCED BY ME OR UNDER MY DIRECTION AND CONTROL AND THAT THIS U.S. PUBLIC LAND SURVEY MONUMENT RECORD IS COMPLETE TO THE BEST OF MY KNOWLEDGE AND BELIEF.

*Jeffrey D. Anderson* 10/1/10  
 SIGNATURE

INDEX NO. K-5

EAST ¼ CORNER, SECTION 18 – LINCOLN COUNTY MON. SET



FACING NORTH



FACING SOUTH



FACING EAST



FACING WEST

