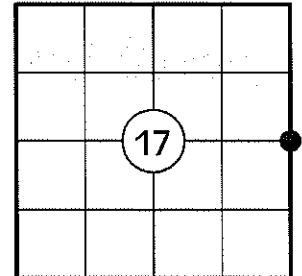


U.S. PUBLIC LAND SURVEY MONUMENT RECORD

NOTE: THIS FORM IS INTENDED AND DESIGNED TO FULFILL ALL REQUIREMENTS OF WISCONSIN ADMINISTRATIVE CODE CHAPTER A-E 7.08 U.S. PUBLIC LAND SURVEY MONUMENT RECORD (3) (a)(b)(c)(d)(e)(f)(g)(h)(i). AN ADDITIONAL SHEET MAY BE ADDED IF NECESSARY TO CONFIRM WITH SAID REQUIREMENTS.

(a) CORNER LOCATION:

EAST 1/4 CORNER OF SECTION 17
 TOWNSHIP 32 NORTH
 RANGE 5 EAST
 TOWN OF HARDING
 COUNTY OF LINCOLN



(b) HISTORY OF ORIGINAL CORNER:

ORIGINAL SURVEYOR: RICHARD O. CHANEY
 DATE OF SURVEY: NOVEMBER, 1852

ORIGINAL BEARING TREES: 10" HEMLOCK - N28°E, 21 LKS
 18" HEMLOCK - N70°W, 8 LKS

(f)(g)(h) DESCRIPTION OF MONUMENT FOUND AT THIS CORNER AND IF IT WAS ACCEPTED STATE ALL EVIDENCE (MATERIAL, TESTIMONIAL, OCCUPATIONAL, PLATS, RECORDS, OTHER MONUMENTS) USED AS A BASIS FOR ESTABLISHING LOCATION. IF REESTABLISHING THROUGH LOST CORNER PROPORTIONATE METHODS, INDICATE ALL MONUMENTS, DISTANCES, AND DIRECTIONS USED TO ESTABLISH. INDICATE TYPE OF MONUMENT AND SIGN POST FOUND OR SET.

1852: RICHARD O. CHANEY SET THE ORIGINAL 1/4 SECTION POST.

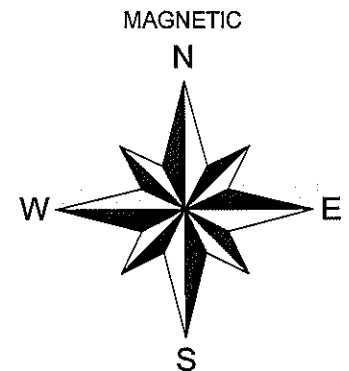
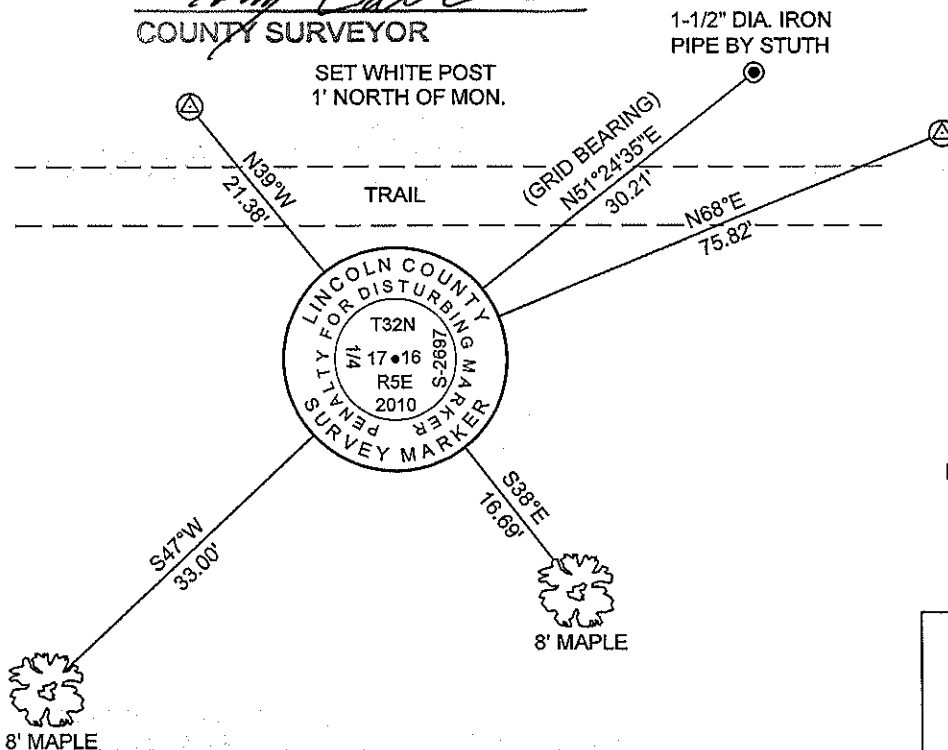
04/20/1983: WILLIAM H. STUTH, RLS, SET AN IRON PIPE AT THE PROPORTIONED 1/4 CORNER LOCATION DURING HIS SUBDIVISION OF SECTION 17. HE MADE THREE BEARING TREES: 11" R.M. - S07°W, 24.3'; 6" R.M. - N07°W, 23.3'; 7" R.M. - N78°W, 28.3'.

09/22/2010: I FOUND STUTH'S 1-1/2" DIA IRON PIPE 8' NORTH OF A WOODS ROAD AND A 1" X 50" POINTED IRON PIPE ROTTED OFF AT GROUND LEVEL SOUTHWEST OF STUTH'S PIPE. THE POINTED 1" PIPE IS THE SAME AS THE PIPES AROUND SECTIONS 5 & 6 WHERE FRANCIS FOX HAD SURVEYED IN THE LATE 1950'S AND EARLY 1960'S. I REPLACED THE 1" X 50" POINTED IRON PIPE WITH A LINCOLN COUNTY ALUMINUM MONUMENT, MADE TWO BEARING TREES AND SET TWO 3/4" DIA. REBAR WITH ALUMINUM CAPS AS REFERENCE MONUMENTS.

(c)(d)(e) PLAN VIEW OF CORNER WITH TIES TO AT LEAST FOUR WITNESSES. IF IN DISAGREEMENT WITH PREVIOUSLY ESTABLISHED CORNER, SHOW THE DISTANCES BETWEEN THE TWO CORNERS AND ALSO INDICATE THE TIE TO THE DISPUTED CORNER.

RECEIVED BY LINCOLN COUNTY
 SURVEYOR THIS 5TH DAY
 OF October 20 10
Tom Dalk
 COUNTY SURVEYOR

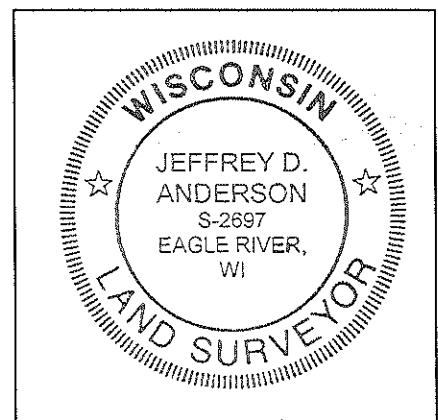
⊕ 3/4" DIA. CAPPED REBAR SET



NOT TO SCALE
 DISTANCES TO BT'S ARE TO NAIL IN SIDE

I JEFFREY D. ANDERSON, REGISTERED LAND SURVEYOR NO. 2697, HEREBY CERTIFY THAT THE CORNER LOCATION ON THIS RECORD WAS REFERENCED BY ME OR UNDER MY DIRECTION AND CONTROL AND THAT THIS U.S. PUBLIC LAND SURVEY MONUMENT RECORD IS COMPLETE TO THE BEST OF MY KNOWLEDGE AND BELIEF.

Jeffrey D. Anderson 10/1/10
 SIGNATURE



INDEX NO. K-9

EAST ¼ CORNER, SECTION 17 – FOUND 1" x 50" POINTED IRON PIPE



FACING NORTH



FACING SOUTH



FACING EAST



FACING WEST

