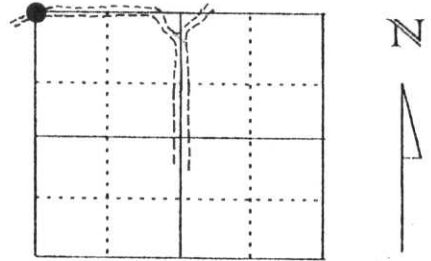


U.S. PUBLIC LAND SURVEY MONUMENT RECORD

Note: This form is intended and designed to fulfill all requirements of Wisconsin Administrative Code, Chapter A-E 5.02, U.S. Public Land Survey Monument Record (3) (a) (b) (c) (d) (e) (f) (g) (h) (i). An additional sheet may be added if necessary to conform with said requirements.

(a) Corner location: Township 32 North
 Range 5 East
 Town/City/Village HARDING
 County Lincoln



Section 21

(b) (f) (g) (h) Description of monument found at this corner and if it was accepted, state all evidence (material, testimonial, occupational, plats, records, other monuments) used as a basis for accepting. If not accepted or if nothing was found, state evidence used as basis for establishing location. If reestablished through lost corner proportionate methods, indicate all monuments, distances and directions used to establish.

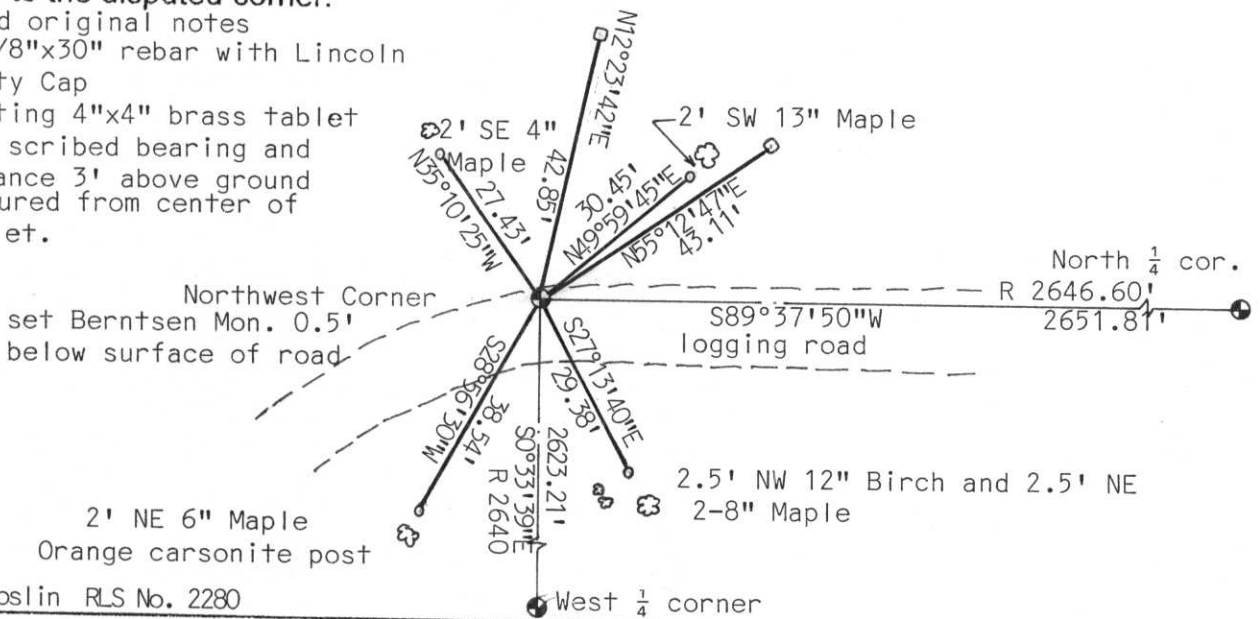
Retied corner because no monument existed and only two ties existed.

Found two ties for Northwest corner of Section 21. The ties were 4"x4" brass Tablets 3' above the ground with the bearing and distance stamped on top. We pulled the ties from the center of the tablets and set a Lincoln County Berntsen Monument at the intersection of the two ties. The monument is set 0.5' below the surface of the road and in the North wheel track of the road.

RECEIVED AT LINCOLN COUNTY
 COURTHOUSE THIS 6th DAY
 OF Dec. 19 99
Pat Priebe
 LAND INFORMATION OFFICE

(c) (d) (e) Plan view of corner with ties to at least 4 witness monuments. If in disagreement with previously established corner, show the distances between the two corners and also indicate the ties to the disputed corner.

- R Record original notes
- Set 7/8"x30" rebar with Lincoln County Cap
- Existing 4"x4" brass tablet with scribed bearing and distance 3' above ground measured from center of tablet.

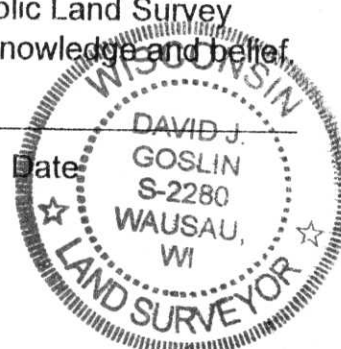


(I) I, David J. Goslin RLS No. 2280

(type or print name) certify that the corner location on this record was determined by me or under my direction and control and that this U.S. Public Land Survey Monument Record is correct and complete to the best of my knowledge and belief.

David J. Goslin
 Signature

12-6-99



Index No. M-9

PROPERTY FOR DISTURBING
PENALTY \$1000
MARK

12 16
20 21





