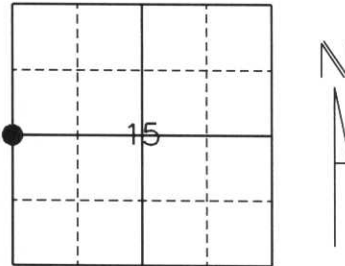


# U.S. PUBLIC LAND SURVEY MONUMENT RECORD

Note: This form is intended and designed to fulfill all requirements of Wisconsin Administrative Code, Chapter A-E 5.02, U.S. Public Land Survey Monument Record (3) (a) (b) (c) (d) (e) (f) (g) (h) (i). An additional sheet may be added if necessary to conform with said requirements.

(a) Corner location: Township 32 North  
 Range 5 East  
 Town/City/Village Harding  
 County Lincoln



Section 15

(b) (f) (g) (h) Description of monument found at this corner and if it was accepted, state all evidence (material, testimonial, occupational, plats, records, other monuments) used as a basis for accepting. If not accepted or if nothing was found, state evidence used as a basis for establishing location. If reestablished through lost corner proportionate methods, indicate all monuments, distances and directions used to establish.

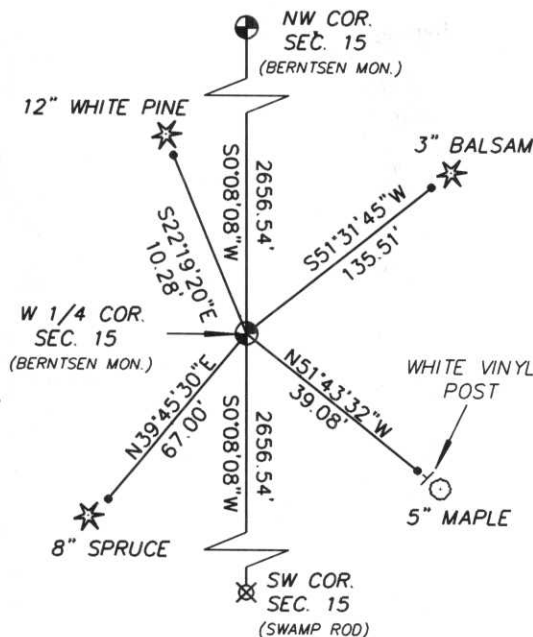
History of original corner establishment:

Originally Surveyed August 5, 1852 by Rich O. Chaney. Original corner was a wooden post with bearing trees:  
 12" Hemlock S79°W, 5 lks.  
 12" Birch N58°E, 38 lks

Description of corner evidence found:

We dug at the intersection of centerlines to the North & East. No evidence of the corner was found. We set a Berntsen Monument by single proportion between Section corners to the North and South. Tied to witness monuments approx. 2 feet from BT's:

(c) (d) (e) Plan view of corner with ties to at least 4 witness monuments. If in disagreement with previously established corner, show the distances between the two corners and also indicate the ties to the disputed corner.



\* NOTE: Drawing not to scale.

All ties are to 7/8" Rebar with Lincoln County Caps approximately 2 feet away.

• 7/8" REBAR W/ L.C. CAPS

RECEIVED AT LINCOLN COUNTY  
 COURTHOUSE THIS 12<sup>TH</sup> DAY  
 OF November 20 02  
*Tomy Dahn*  
 LAND INFORMATION OFFICE



(i) I, William W. Nutter RLS, S-2299  
 (type or print name) certify that the corner location on this record was determined by me or under my direction and control and that this U.S. Public Land Survey Monument Record is correct and complete to the best of my knowledge and belief.

*William W. Nutter, RLS*

Signature

11-6-2002

Date

Index No.

K-13

















