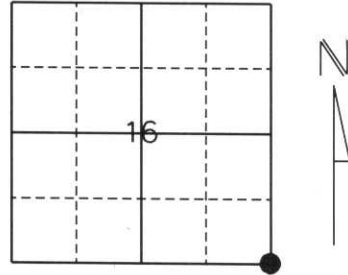


U.S. PUBLIC LAND SURVEY MONUMENT RECORD

Note: This form is intended and designed to fulfill all requirements of Wisconsin Administrative Code, Chapter A-E 5.02, U.S. Public Land Survey Monument Record (3) (a) (b) (c) (d) (e) (f) (g) (h) (l). An additional sheet may be added if necessary to conform with said requirements.

(a) Corner location: Township 32 North
 Range 5 East
 Town/City/Village Harding
 County Lincoln



Section 16

(b) (f) (g) (h) Description of monument found at this corner and if it was accepted, state all evidence (material, testimonial, occupational, plats, records, other monuments) used as a basis for accepting. If not accepted or if nothing was found, state evidence used as a basis for establishing location. If reestablished through lost corner proportionate methods, indicate all monuments, distances and directions used to establish.

History of original corner establishment:

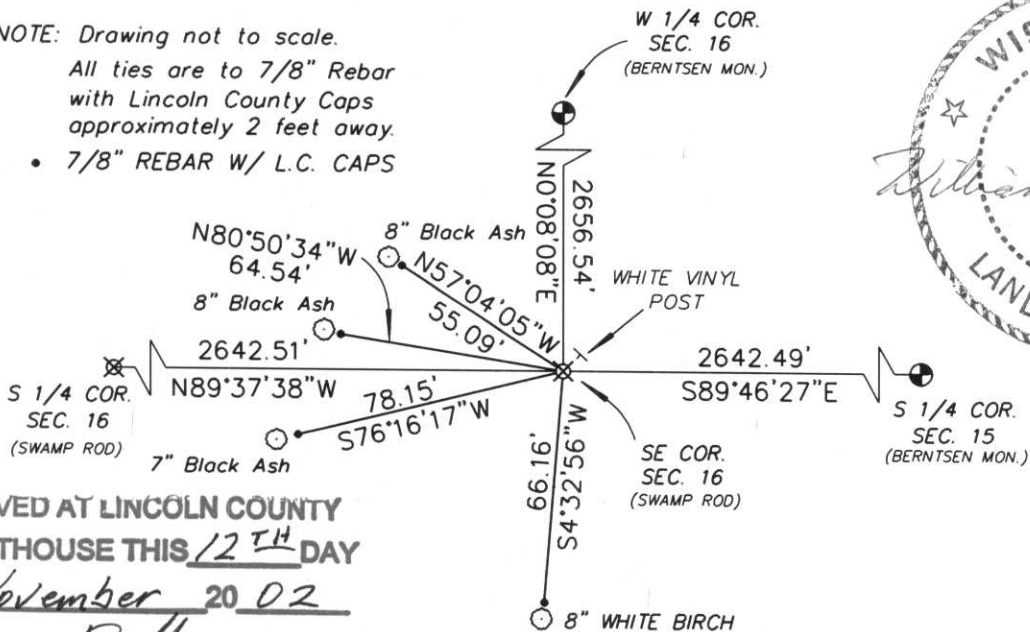
Originally Surveyed August, 5, 1852 by Rich O. Chaney. Original corner was a wooden post with bearing trees:
 12" Black Ash, N68°E, 40 lks.
 10" Birch, S86°W, 21 lks

Description of corner evidence found:

We located an old bent-over, 1-1/4" iron pipe in a marshy area. This position fit quite well with ties to the South Quarter Section corners to the East and West. We accepted this position and replaced iron pipe with a Swamp Rod with a Lincoln Co. cap. We tied this to 7/8" rebar with Lincoln County caps as Witness Monuments. Laid old IP along side as shown below.

(c) (d) (e) Plan view of corner with ties to at least 4 witness monuments. If in disagreement with previously established corner, show the distances between the two corners and also indicate the ties to the disputed corner.

- * NOTE: Drawing not to scale.
- All ties are to 7/8" Rebar with Lincoln County Caps approximately 2 feet away.
- 7/8" REBAR W/ L.C. CAPS



RECEIVED AT LINCOLN COUNTY
 COURTHOUSE THIS 12TH DAY
 OF November 20 02
Tony Dallen
 LAND INFORMATION OFFICE

(I) I, William W. Nutter RLS, S-2299
 (type or print name) certify that the corner location on this record was determined by me or under my direction and control and that this U.S. Public Land Survey Monument Record is correct and complete to the best of my knowledge and belief.

William W. Nutter, RLS
 Signature

11-6-2002
 Date

Index No.

M-13

COUNTY
ARBOR
BENNETT
MARKER
SURVEY





MARKER





