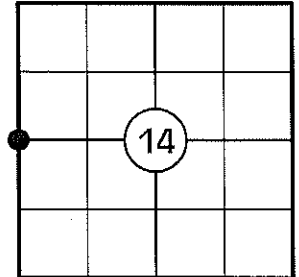


# U.S. PUBLIC LAND SURVEY MONUMENT RECORD

NOTE: THIS FORM IS INTENDED AND DESIGNED TO FULFILL ALL REQUIREMENTS OF WISCONSIN ADMINISTRATIVE CODE CHAPTER A-E 7.08 U.S. PUBLIC LAND SURVEY MONUMENT RECORD (3) (a)(b)(c)(d)(e)(f)(g)(h)(i). AN ADDITIONAL SHEET MAY BE ADDED IF NECESSARY TO CONFIRM WITH SAID REQUIREMENTS.

(a) CORNER LOCATION:

W 1/4 CORNER OF SECTION 14  
 TOWNSHIP 32 NORTH  
 RANGE 5 EAST  
 TOWN OF HARDING  
 COUNTY OF LINCOLN



(b) HISTORY OF ORIGINAL CORNER:

ORIGINAL SURVEYOR: RICHARD O. CHANEY  
 DATE OF SURVEY: NOVEMBER, 1852

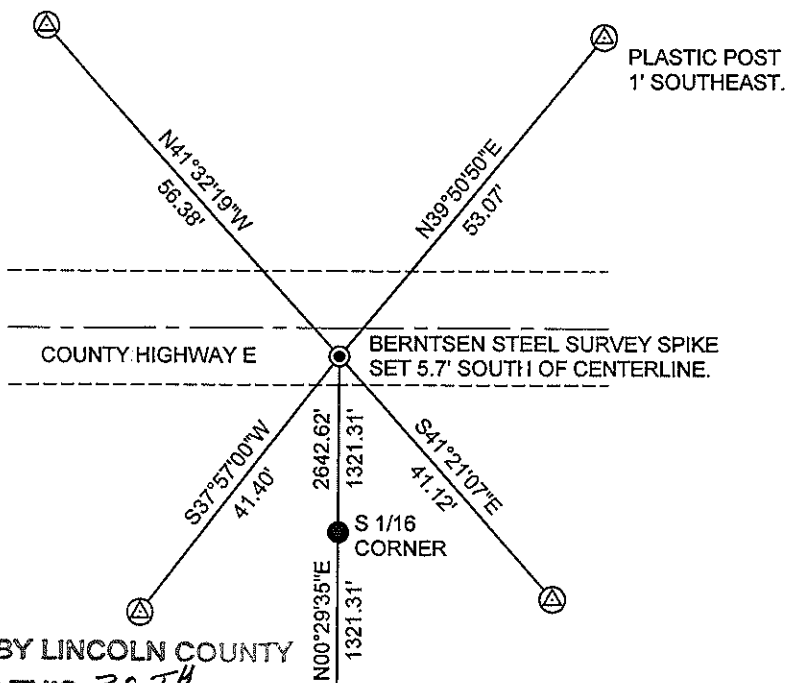
ORIGINAL BEARING TREES: 12" HEMLOCK - S60°E, 21 LKS  
 14" HEMLOCK - N33°W, 30 LKS

(f)(g)(h) DESCRIPTION OF MONUMENT FOUND AT THIS CORNER AND IF IT WAS ACCEPTED STATE ALL EVIDENCE (MATERIAL, TESTIMONIAL, OCCUPATIONAL, PLATS, RECORDS, OTHER MONUMENTS) USED AS A BASIS FOR ESTABLISHING LOCATION. IF REESTABLISHING THROUGH LOST CORNER PROPORTIONATE METHODS, INDICATE ALL MONUMENTS, DISTANCES, AND DIRECTIONS USED TO ESTABLISH. INDICATE TYPE OF MONUMENT AND SIGN POST FOUND OR SET.

1852: RICHARD O. CHANEY SET THE ORIGINAL 1/4 CORNER POST.

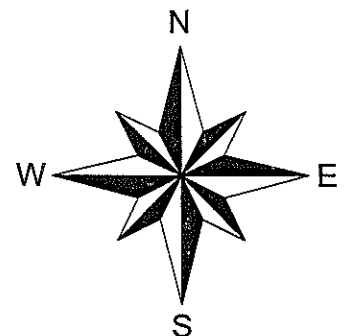
11/17/2010: I FOUND NO EVIDENCE OF THE ORIGINAL CORNER. I FOUND A 3/4" X 48" POINTED IRON PIPE AT THE S 1/16 CORNER AND THE SOUTHWEST SECTION CORNER. THIS TYPE OF MONUMENT IS CONSISTENT WITH WHAT FORMER COUNTY SURVEYOR FRANCIS FOX USED TO SET. I DOUBLED OVER THE 1/16 CORNER TO POSITION THIS CORNER. I REFERENCED THE CORNER AS SHOWN BELOW.

(c)(d)(e) PLAN VIEW OF CORNER WITH TIES TO AT LEAST FOUR WITNESSES. IF IN DISAGREEMENT WITH PREVIOUSLY ESTABLISHED CORNER, SHOW THE DISTANCES BETWEEN THE TWO CORNERS AND ALSO INDICATE THE TIE TO THE DISPUTED CORNER.



⊠ 3/4" DIA. CAPPED REBAR SET

LINCOLN COUNTY GRID



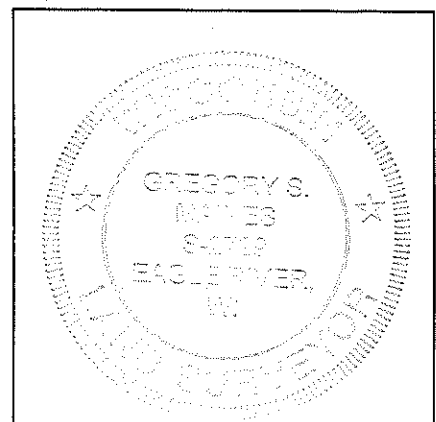
NOT TO SCALE  
 DISTANCES TO BT'S ARE TO NAIL IN SIDE

RECEIVED BY LINCOLN COUNTY  
 SURVEYOR THIS 30<sup>TH</sup> DAY  
 OF December, 20 10  
*Tom Dalk*  
 COUNTY SURVEYOR



I GREGORY S. MAINES, REGISTERED LAND SURVEYOR NO. 2729, HEREBY CERTIFY THAT THE CORNER LOCATION ON THIS RECORD WAS REFERENCED BY ME OR UNDER MY DIRECTION AND CONTROL AND THAT THIS U.S. PUBLIC LAND SURVEY MONUMENT RECORD IS COMPLETE TO THE BEST OF MY KNOWLEDGE AND BELIEF.

*Gregory S. Maines* 12/29/10  
 SIGNATURE



INDEX NO. K-17

**WEST 1/4 CORNER OF SECTION 14, T32N, R05E**

**BERNTSEN STEEL SURVEY SPIKE SET**



**FACING NORTH**





**FACING SOUTH**



**FACING EAST**



**FACING WEST**

