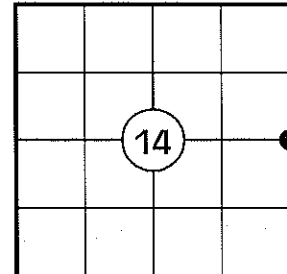


# U.S. PUBLIC LAND SURVEY MONUMENT RECORD

NOTE: THIS FORM IS INTENDED AND DESIGNED TO FULFILL ALL REQUIREMENTS OF WISCONSIN ADMINISTRATIVE CODE CHAPTER A-E 7.08 U.S. PUBLIC LAND SURVEY MONUMENT RECORD (3) (a)(b)(c)(d)(e)(f)(g)(h)(i). AN ADDITIONAL SHEET MAY BE ADDED IF NECESSARY TO CONFIRM WITH SAID REQUIREMENTS.

**(a) CORNER LOCATION:**

EAST 1/4 CORNER OF SECTION 14  
 TOWNSHIP 32 NORTH  
 RANGE 5 EAST  
 TOWN OF HARDING  
 COUNTY OF LINCOLN



**(b) HISTORY OF ORIGINAL CORNER:**

ORIGINAL SURVEYOR: RICHARD O. CHANEY  
 DATE OF SURVEY: NOVEMBER, 1852

ORIGINAL BEARING TREES: 13" BIRCH - N20°E, 56 LKS  
 15" BIRCH - S45°W, 32 LKS

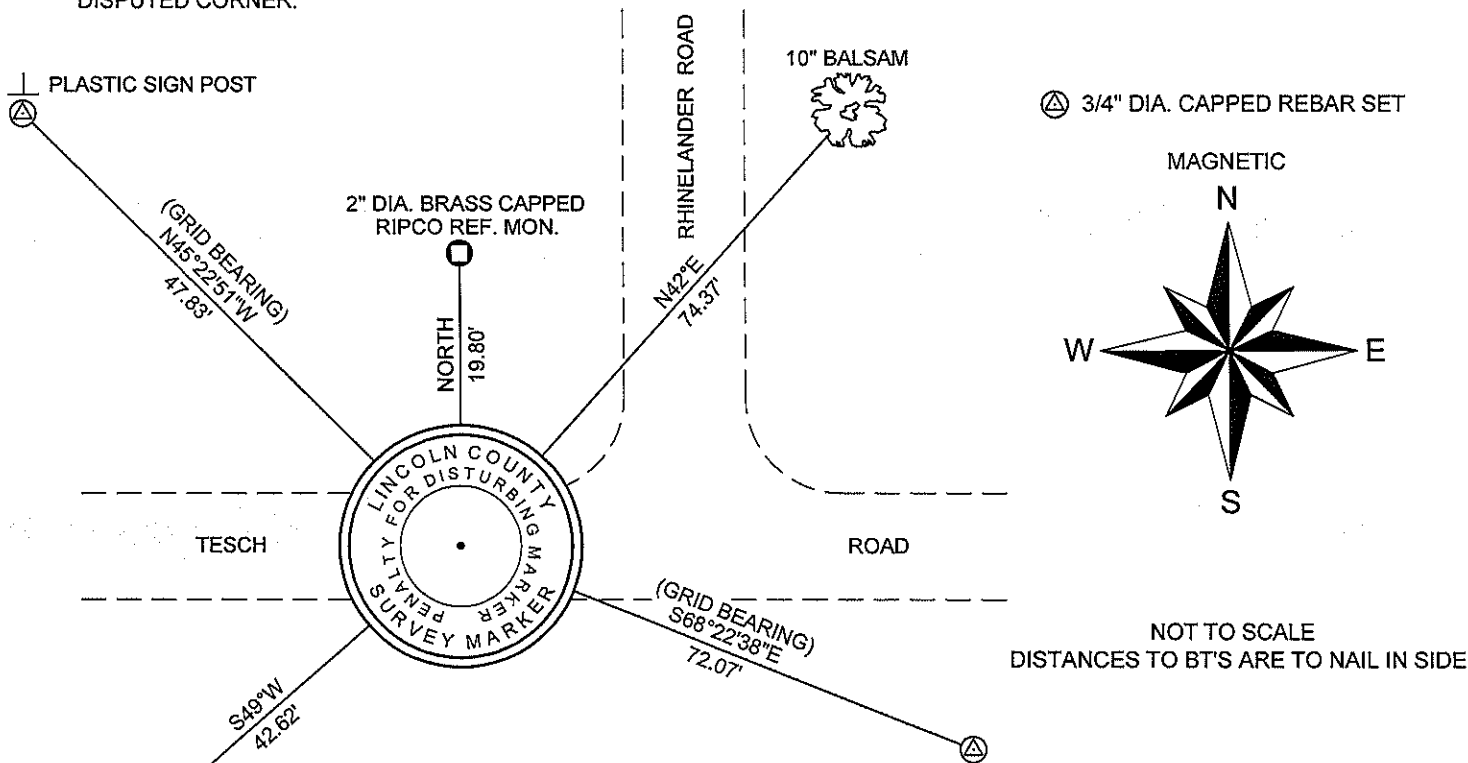
**(f)(g)(h) DESCRIPTION OF MONUMENT FOUND AT THIS CORNER AND IF IT WAS ACCEPTED STATE ALL EVIDENCE (MATERIAL, TESTIMONIAL, OCCUPATIONAL, PLATS, RECORDS, OTHER MONUMENTS) USED AS A BASIS FOR ESTABLISHING LOCATION. IF REESTABLISHING THROUGH LOST CORNER PROPORTIONATE METHODS, INDICATE ALL MONUMENTS, DISTANCES, AND DIRECTIONS USED TO ESTABLISH. INDICATE TYPE OF MONUMENT AND SIGN POST FOUND OR SET.**

1852: RICHARD O. CHANEY SET THE ORIGINAL 1/4 SECTION POST.

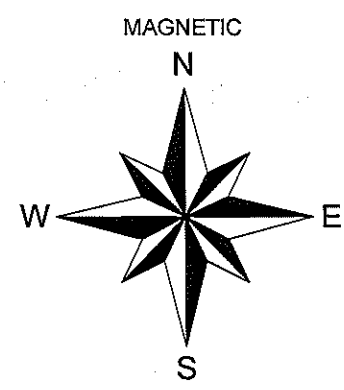
10/1958: RIPCO SURVEYORS NOTED AN IRON PIN IN ROAD AND SET A REFERENCE PIPE 30 LKS. NORTH AND MADE A 3" ELM BT, S44°W, 61.25 LKS.

09/20/2010: I FOUND THE REFERENCE MONUMENT 30 LKS NORTH OF THE CENTERLINE OF TESCH ROAD. I COULD NOT FIND EVIDENCE OF THE IRON PIN IN THE ROAD. I SET A LINCOLN COUNTY MONUMENT 10" BELOW GRADE 19.8' (30 LKS) SOUTH OF THE REFERENCE MONUMENT. I MADE TWO BEARING TREES AND SET TWO 3/4" DIA. REBAR WITH ALUMINUM CAPS AS REFERENCE MONUMENTS.

**(c)(d)(e) PLAN VIEW OF CORNER WITH TIES TO AT LEAST FOUR WITNESSES. IF IN DISAGREEMENT WITH PREVIOUSLY ESTABLISHED CORNER, SHOW THE DISTANCES BETWEEN THE TWO CORNERS AND ALSO INDICATE THE TIE TO THE DISPUTED CORNER.**

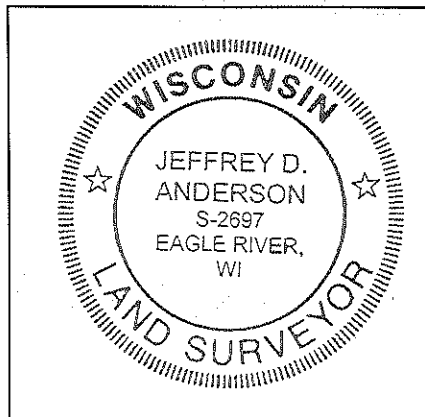


⊙ 3/4" DIA. CAPPED REBAR SET



NOT TO SCALE  
 DISTANCES TO BT'S ARE TO NAIL IN SIDE

RECEIVED BY LINCOLN COUNTY  
 SURVEYOR THIS 5<sup>TH</sup> DAY  
 OF October 20 10  
*Tom Dalk*  
 COUNTY SURVEYOR



INDEX NO. K-21

I JEFFREY D. ANDERSON, REGISTERED LAND SURVEYOR NO. 2697, HEREBY CERTIFY THAT THE CORNER LOCATION ON THIS RECORD WAS REFERENCED BY ME OR UNDER MY DIRECTION AND CONTROL AND THAT THIS U.S. PUBLIC LAND SURVEY MONUMENT RECORD IS COMPLETE TO THE BEST OF MY KNOWLEDGE AND BELIEF.

*Jeffrey D. Anderson* 10/1/10  
 SIGNATURE

EAST ¼ CORNER, SECTION 14 – SET LINCOLN COUNTY MONUMENT FROM RIPCO TIES



FACING NORTH



FACING SOUTH



FACING EAST





FACING WEST

