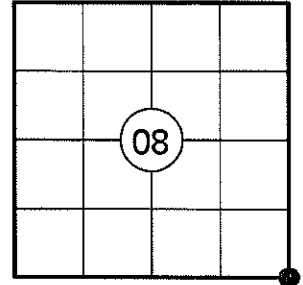


U.S. PUBLIC LAND SURVEY MONUMENT RECORD

NOTE: THIS FORM IS INTENDED AND DESIGNED TO FULFILL ALL REQUIREMENTS OF WISCONSIN ADMINISTRATIVE CODE CHAPTER A-E 7.08 U.S. PUBLIC LAND SURVEY MONUMENT RECORD (3) (a)(b)(c)(d)(e)(f)(g)(h)(i). AN ADDITIONAL SHEET MAY BE ADDED IF NECESSARY TO CONFIRM WITH SAID REQUIREMENTS.

(a) CORNER LOCATION:

SOUTHEAST CORNER OF SECTION 8
 TOWNSHIP 32 NORTH
 RANGE 5 EAST
 TOWN OF HARDING
 COUNTY OF LINCOLN



(b) HISTORY OF ORIGINAL CORNER:

ORIGINAL SURVEYOR: RICHARD O. CHANEY
 DATE OF SURVEY: NOVEMBER, 1852

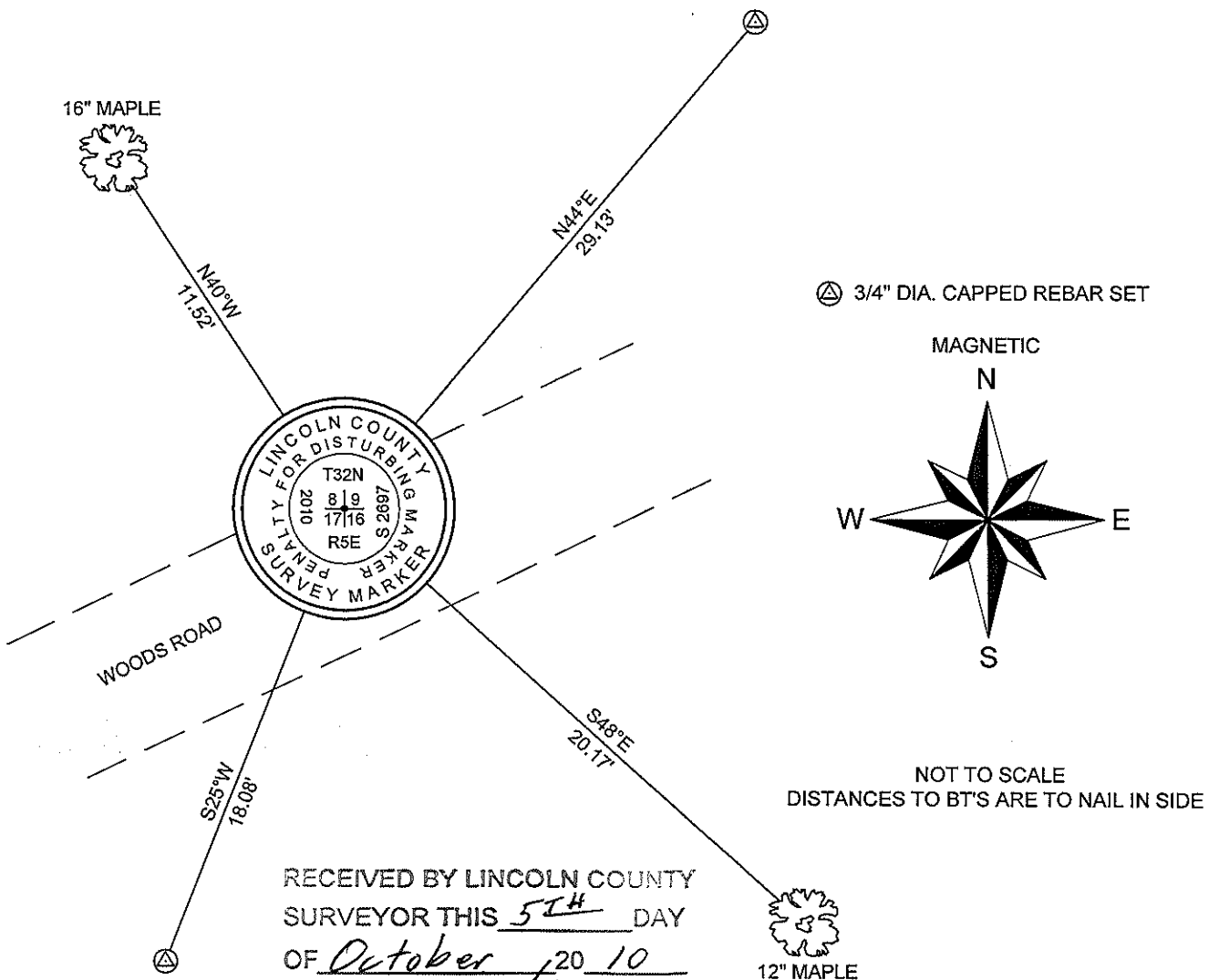
ORIGINAL BEARING TREES: 24" HEMLOCK - S23°W, 35 LKS
 8" SUGAR - N68°E, 8 LKS

(f)(g)(h) DESCRIPTION OF MONUMENT FOUND AT THIS CORNER AND IF IT WAS ACCEPTED STATE ALL EVIDENCE (MATERIAL, TESTIMONIAL, OCCUPATIONAL, PLATS, RECORDS, OTHER MONUMENTS) USED AS A BASIS FOR ESTABLISHING LOCATION. IF REESTABLISHING THROUGH LOST CORNER PROPORTIONATE METHODS, INDICATE ALL MONUMENTS, DISTANCES, AND DIRECTIONS USED TO ESTABLISH. INDICATE TYPE OF MONUMENT AND SIGN POST FOUND OR SET.

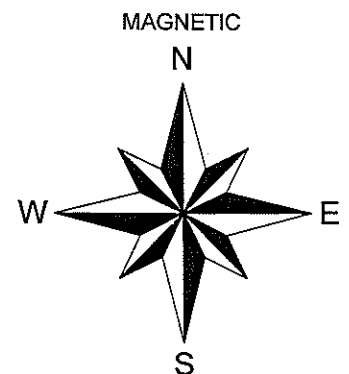
1852: RICHARD O. CHANEY SET THE ORIGINAL SECTION CORNER POST.

09/30/2010: I SEARCHED THE AREA AND FOUND NO EVIDENCE OF THE ORIGINAL CORNER. A BLUE BLAZE LINE RUNS NORTH AND WEST FROM THE SEARCH AREA. THESE LINES WERE MARKED BY FORESTER BILL WENGELER FOR A TIMBER SALE. I POSITIONED THIS CORNER BY DOUBLE PROPORTION USING THE CORNERS SHOWN ON SHEET 2. THIS POSITION FALLS ON THE NORTH EDGE OF A WOODS ROAD. I SET A LINCOLN COUNTY ALUMINUM BERNSTEN BREAKAWAY MONUMENT 4" BELOW GRADE, MADE TWO BEARING TREES AND SET TWO 3/4" DIA. REBAR WITH ALUMINUM CAPS AS REFERENCE MONUMENTS. I SET A WHITE PLASTIC POST 2' NORTH.

(c)(d)(e) PLAN VIEW OF CORNER WITH TIES TO AT LEAST FOUR WITNESSES. IF IN DISAGREEMENT WITH PREVIOUSLY ESTABLISHED CORNER, SHOW THE DISTANCES BETWEEN THE TWO CORNERS AND ALSO INDICATE THE TIE TO THE DISPUTED CORNER.



⊗ 3/4" DIA. CAPPED REBAR SET



NOT TO SCALE
 DISTANCES TO BT'S ARE TO NAIL IN SIDE

RECEIVED BY LINCOLN COUNTY
 SURVEYOR THIS 5TH DAY
 OF October, 20 10
Tom Dahl
 COUNTY SURVEYOR

6-1

