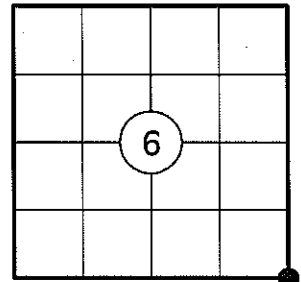


U.S. PUBLIC LAND SURVEY MONUMENT RECORD

NOTE: THIS FORM IS INTENDED AND DESIGNED TO FULFILL ALL REQUIREMENTS OF WISCONSIN ADMINISTRATIVE CODE CHAPTER A-E 7.08 U.S. PUBLIC LAND SURVEY MONUMENT RECORD (3) (a)(b)(c)(d)(e)(f)(g)(h)(i). AN ADDITIONAL SHEET MAY BE ADDED IF NECESSARY TO CONFIRM WITH SAID REQUIREMENTS.

(a) CORNER LOCATION:

SOUTHEAST CORNER OF SECTION 6
 TOWNSHIP 32 NORTH
 RANGE 5 EAST
 TOWN OF HARDING
 COUNTY OF LINCOLN



(b) HISTORY OF ORIGINAL CORNER:

ORIGINAL SURVEYOR: RICHARD O. CHANEY
 DATE OF SURVEY: NOVEMBER, 1852

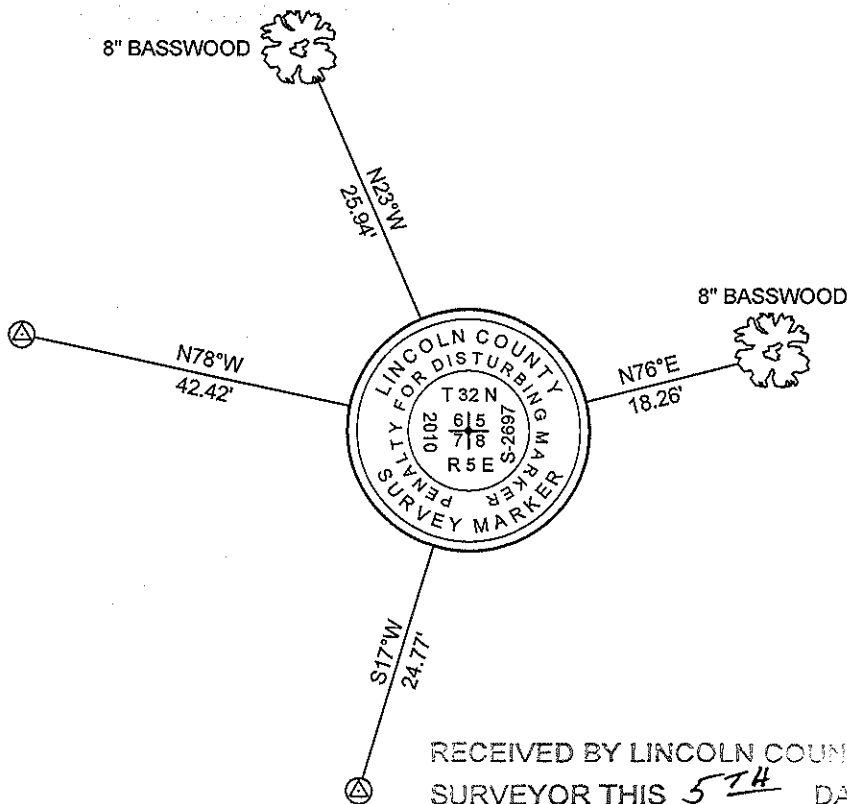
ORIGINAL BEARING TREES: 18" BIRCH - S21°E, 29 LKS
 12" HEMLOCK - N46°W, 33 LKS

(f)(g)(h) DESCRIPTION OF MONUMENT FOUND AT THIS CORNER AND IF IT WAS ACCEPTED STATE ALL EVIDENCE (MATERIAL, TESTIMONIAL, OCCUPATIONAL, PLATS, RECORDS, OTHER MONUMENTS) USED AS A BASIS FOR ESTABLISHING LOCATION. IF REESTABLISHING THROUGH LOST CORNER PROPORTIONATE METHODS, INDICATE ALL MONUMENTS, DISTANCES, AND DIRECTIONS USED TO ESTABLISH. INDICATE TYPE OF MONUMENT AND SIGN POST FOUND OR SET.

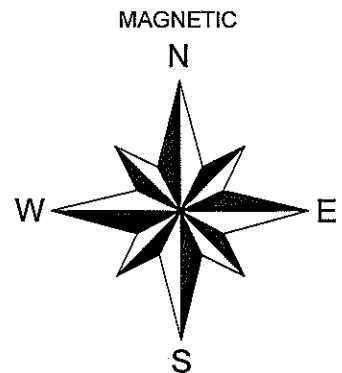
1852: RICHARD O. CHANEY SET THE ORIGINAL SECTION CORNER POST.

09/22/2010: I FOUND AN OLD 1" X 50" POINTED IRON PIPE ROTTED AT GROUND LEVEL. A BLAZED LINE RUNS NORTH AND SOUTH FROM THE PIPE AND THE LAND TO THE NORTHEAST HAS BEEN RECENTLY LOGGED. WE FOUND THIS SAME TYPE OF MONUMENT AT SEVERAL OF THE QUARTER CORNER AND SECTION CORNER LOCATIONS IN THIS AREA. CARLOS BERNDT, A LONGTIME LANDOWNER IN THIS AREA, SAID THAT HE WAS WITH FRANCIS FOX WHEN HE SET THESE CORNERS IN THE LATE 1950'S OR EARLY 1960'S. I HELD THE IRON PIPE AS THE BEST AVAILABLE EVIDENCE OF THE CORNER AND REPLACED IT WITH A LINCOLN COUNTY MONUMENT. I MADE TWO BEARING TREES AND SET TWO 3/4" DIA. REBAR WITH ALUMINUM CAPS AS REFERENCE MONUMENTS. I SET A WHITE POST 1' SOUTH OF THE MONUMENT.

(c)(d)(e) PLAN VIEW OF CORNER WITH TIES TO AT LEAST FOUR WITNESSES. IF IN DISAGREEMENT WITH PREVIOUSLY ESTABLISHED CORNER, SHOW THE DISTANCES BETWEEN THE TWO CORNERS AND ALSO INDICATE THE TIE TO THE DISPUTED CORNER.



⊕ 3/4" DIA. CAPPED REBAR SET

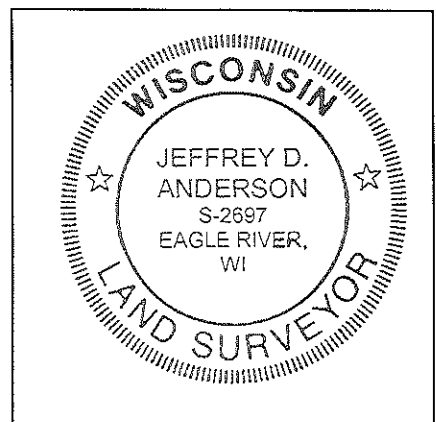


NOT TO SCALE
 DISTANCES TO BT'S ARE TO NAIL IN SIDE

RECEIVED BY LINCOLN COUNTY
 SURVEYOR THIS 5TH DAY
 OF October 20 10
Jeffrey D. Anderson
 COUNTY SURVEYOR

I JEFFREY D. ANDERSON, REGISTERED LAND SURVEYOR NO. 2697, HEREBY CERTIFY THAT THE CORNER LOCATION ON THIS RECORD WAS REFERENCED BY ME OR UNDER MY DIRECTION AND CONTROL AND THAT THIS U.S. PUBLIC LAND SURVEY MONUMENT RECORD IS COMPLETE TO THE BEST OF MY KNOWLEDGE AND BELIEF.

Jeffrey D. Anderson 10/1/10
 SIGNATURE



INDEX NO. E-5

SOUTHWEST CORNER, SECTION 5 – FOUND 1" x 50" POINTED IRON PIPE

FACING NORTH



FACING SOUTH



FACING EAST



FACING WEST

