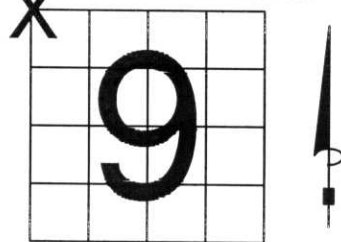


# U.S. PUBLIC LAND SURVEY MONUMENT RECORD

NOTE: THIS FORM IS INTENDED AND DESIGNED TO FULFILL ALL REQUIREMENTS OF WISCONSIN ADMINISTRATIVE CODE, CHAPTER LAND SURVEY MONUMENT RECORD (3) (a) (b) (c) (d) (e) (f) (g) (h) (i). AN ADDITIONAL SHEET MAY BE ADDED IF NECESSARY TO CONFORM WITH SAID REQUIREMENTS. A-E 7.08 U.S. PUBLIC LAND SURVEY MONUMENT RECORD

(a) CORNER LOCATION: TOWNSHIP 32 NORTH  
 RANGE 5 EAST/~~WEST~~  
~~TOWN/CITY/VILLAGE~~ HARDING  
 COUNTY LINCOLN



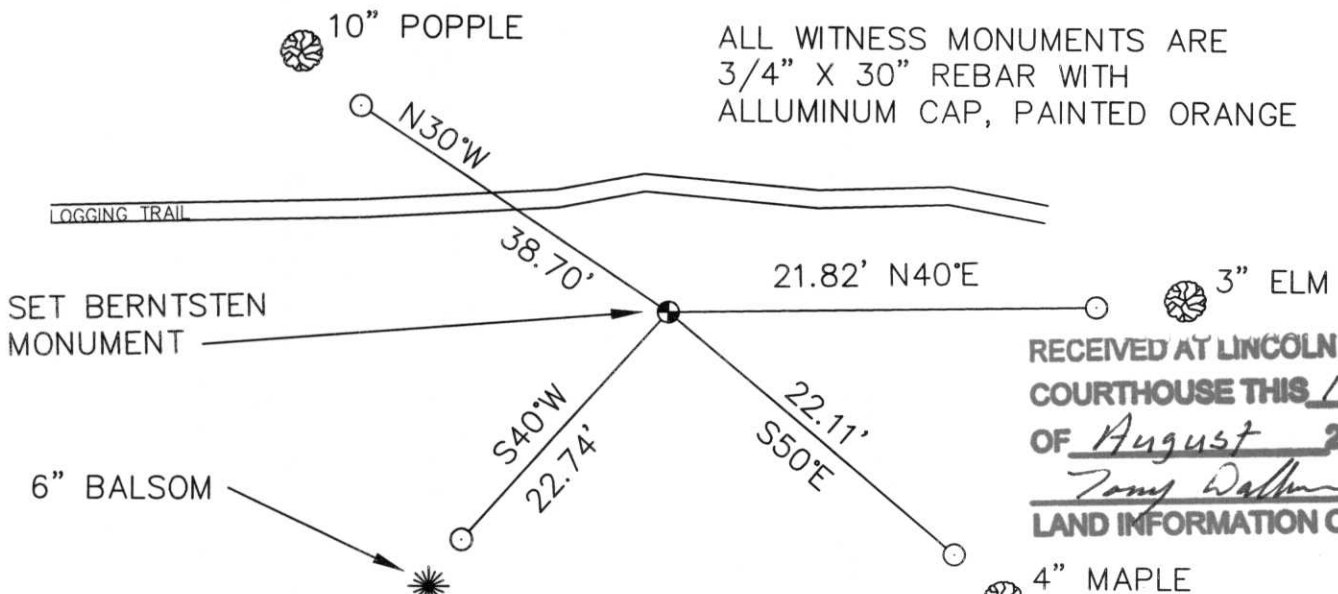
SECTION 9

(b) (f) (g) (h) DESCRIPTION OF MONUMENT FOUND AT THIS CORNER AND IF IT WAS ACCEPTED, STATE ALL EVIDENCE (MATERIAL, TESTIMONIAL, OCCUPATIONAL, PLATS, RECORDS, OTHER MONUMENTS) USED AS BASIS FOR ACCEPTING. IF NOT ACCEPTED OR IF NOTHING WAS FOUND, STATE EVIDENCE USED AS BASIS FOR ESTABLISHING LOCATION. IF REESTABLISHED THROUGH LOST CORNER PROPORTIONATE METHODS, INDICATE ALL MONUMENTS, DISTANCES AND DIRECTIONS USED TO ESTABLISH. INDICATE TYPE OF MONUMENT FOUND OR SET AND SIGN POST.

ORIGINAL CORNER SET IN NOVEMBER, 1852, BY RICK CHANEY. DAVID AMENT, LOCAL LAND OWNER, SAID THAT IN THE 40'S, A LARGE FOREST FIRE BURNT EVERYTHING IN THIS TOWNSHIP. THERE ARE NO LARGE STUMPS IN THIS SECTION. ORIGINAL TIES: BIRCH 10" S48°E, 8 LINKS; HEMLOCK 13", N36°W, 42 LINKS FOUND NO EVIDENCE OF ORIGINAL TIES OR ORIGINAL WOOD POST.

FOUND 3/4" X 40" POINTED IRON PIPE ON EAST/WEST PAINT LINE. LOGGING WAS GOING ON NORTH OF PAINT LINE. HELD AS CORNER. SET BERNTSEN MONUMENT TIED OUT.

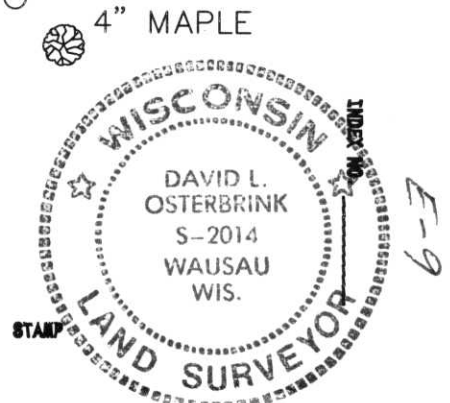
(c) (d) (e) PLAN VIEW OF CORNER WITH TIES TO AT LEAST 4 WITNESS MONUMENTS. IF IN DISAGREEMENT WITH PREVIOUSLY ESTABLISHED CORNER, SHOW THE DISTANCES BETWEEN THE TWO CORNERS AND ALSO INDICATE THE TIES TO THE DISPUTED CORNER.



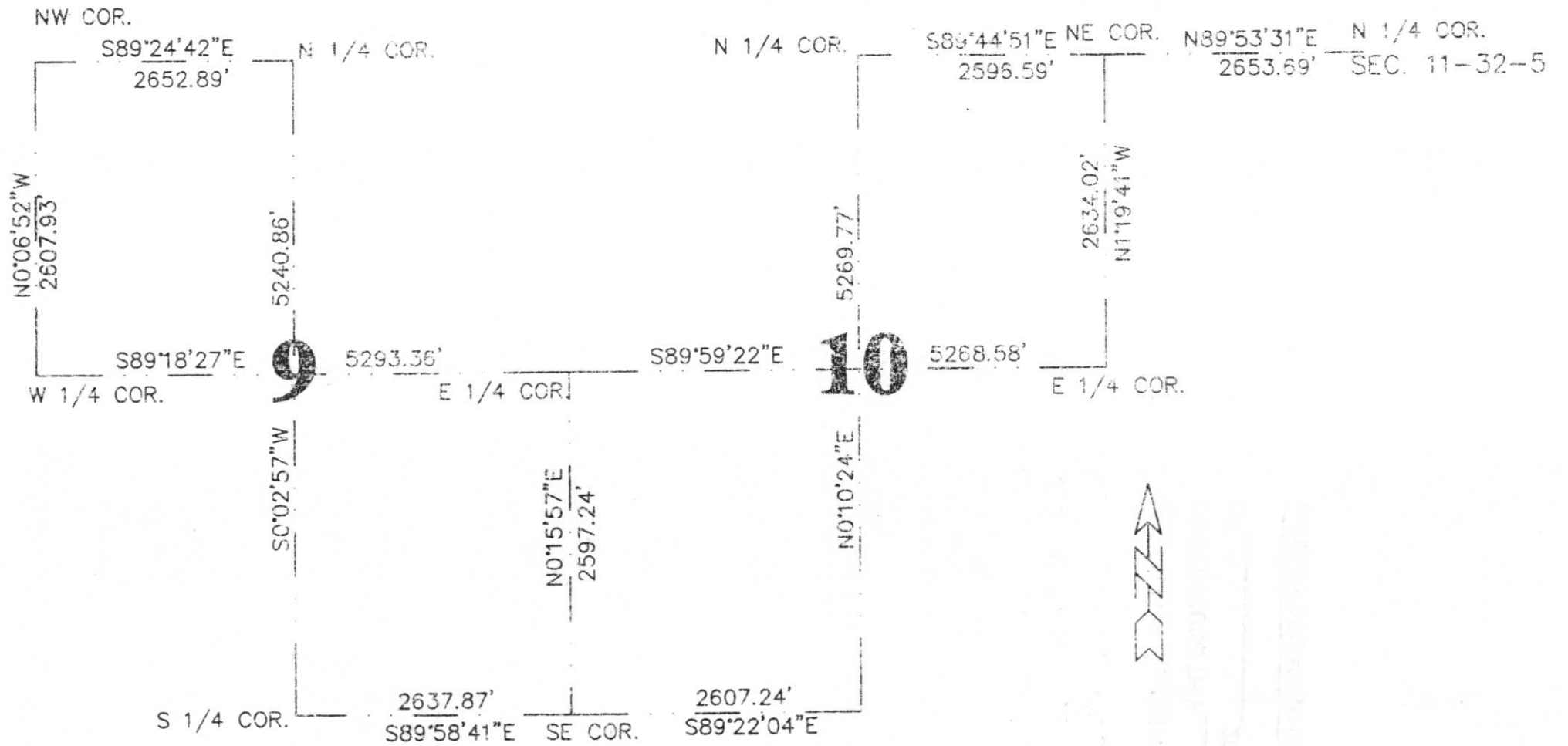
RECEIVED AT LINCOLN COUNTY  
 COURTHOUSE THIS 14<sup>TH</sup> DAY  
 OF August 20 01  
*Tony Walker*  
 LAND INFORMATION OFFICE

(i) I, DAVID L. OSTERBRINK  
 (TYPE OR PRINT NAME) CERTIFY THAT THE CORNER LOCATION ON THIS RECORD WAS DETERMINED BY ME OR UNDER MY DIRECTION AND CONTROL AND THAT THIS U.S. PUBLIC LAND SURVEY MONUMENT RECORD IS CORRECT AND COMPLETE TO THE BEST OF MY KNOWLEDGE AND BELIEF.

*David L. Osterbrink* AUGUST 8, 2001  
 SIGNATURE DATE



# SECTION SUMMARY, SECTIONS 9 & 10, T 32N, R5E, TOWN OF HARDING







LINCOLN COUNTY  
FOR DISTRICT  
COMMISSIONER  
SURVEY  
W. A. KERR

5 4  
9 10















