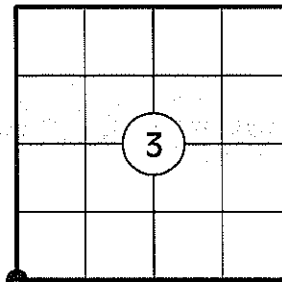


U.S. PUBLIC LAND SURVEY MONUMENT RECORD

NOTE: THIS FORM IS INTENDED AND DESIGNED TO FULFILL ALL REQUIREMENTS OF WISCONSIN ADMINISTRATIVE CODE CHAPTER A-E 7.08 U.S. PUBLIC LAND SURVEY MONUMENT RECORD (3) (a)(b)(c)(d)(e)(f)(g)(h)(i). AN ADDITIONAL SHEET MAY BE ADDED IF NECESSARY TO CONFIRM WITH SAID REQUIREMENTS.

(a) CORNER LOCATION:

SW CORNER OF SECTION 3
 TOWNSHIP 32 NORTH
 RANGE 5 EAST
 TOWN OF HARDING
 COUNTY OF LINCOLN



(b) HISTORY OF ORIGINAL CORNER:

ORIGINAL SURVEYOR: RICHARD O. CHANEY
 DATE OF SURVEY: NOVEMBER, 1852

ORIGINAL BEARING TREES: 12" W. PINE - N50°W, 60 LKS
 10" W. PINE - S54°E, 8 LKS

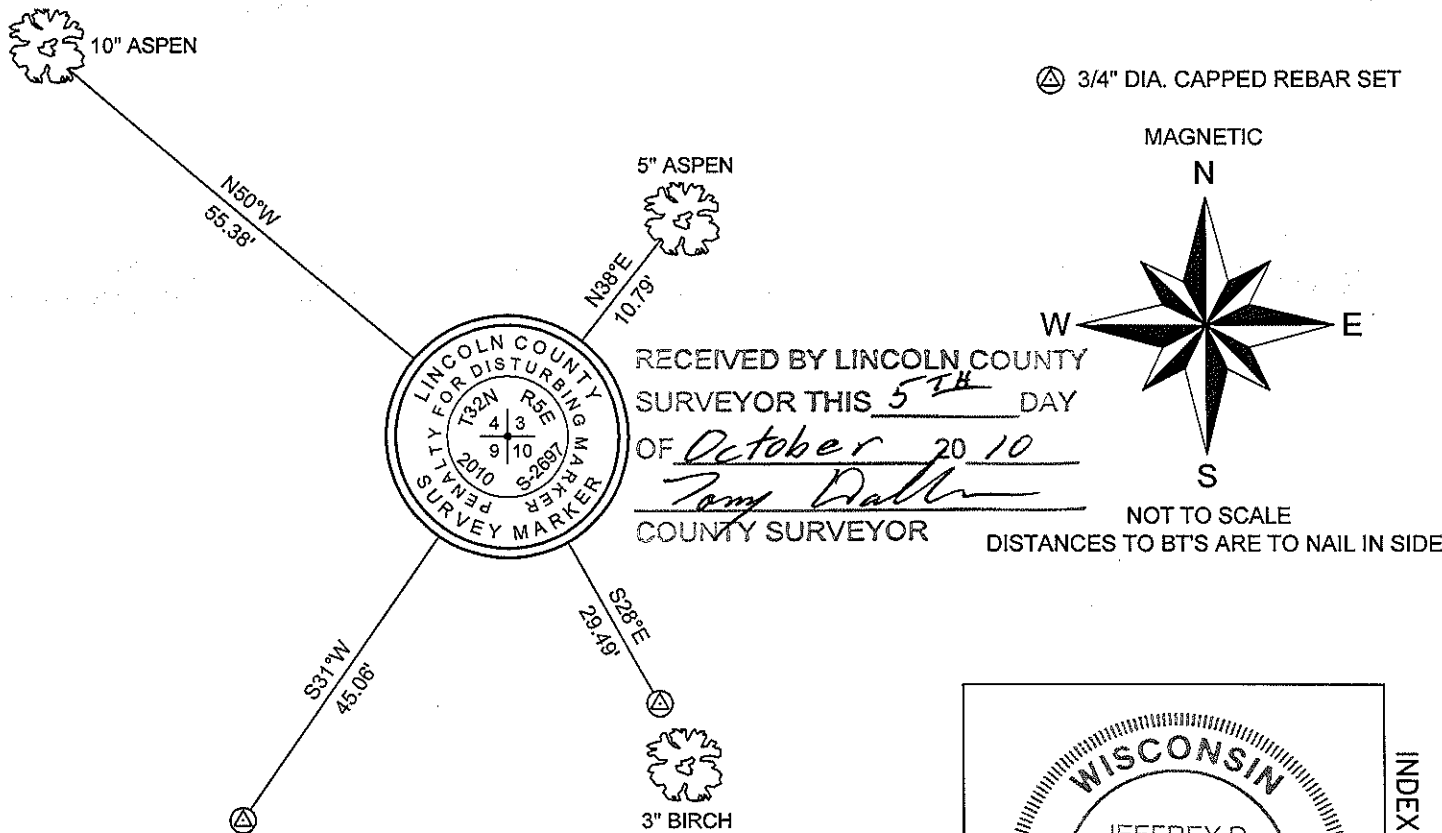
(f)(g)(h) DESCRIPTION OF MONUMENT FOUND AT THIS CORNER AND IF IT WAS ACCEPTED STATE ALL EVIDENCE (MATERIAL, TESTIMONIAL, OCCUPATIONAL, PLATS, RECORDS, OTHER MONUMENTS) USED AS A BASIS FOR ESTABLISHING LOCATION. IF REESTABLISHING THROUGH LOST CORNER PROPORTIONATE METHODS, INDICATE ALL MONUMENTS, DISTANCES, AND DIRECTIONS USED TO ESTABLISH. INDICATE TYPE OF MONUMENT AND SIGN POST FOUND OR SET.

1852: RICHARD O. CHANEY SET THE ORIGINAL SECTION CORNER POST.

05/05/2005: WILLIAM NUTTER, RLS FOUND A 1" DIA. IRON PIPE AT THE CORNER LOCATION AND USED IT IN HIS SURVEY OF THE N 1/2 OF SECTION 10. (C.S.M. 1852)

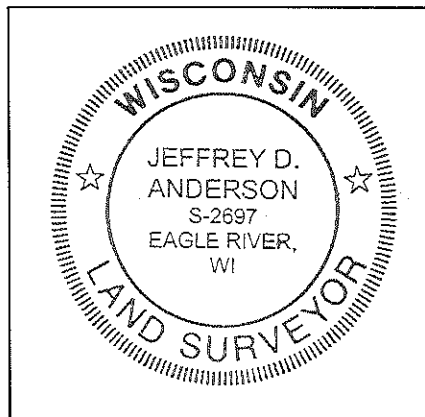
02/23/2010: I FOUND A 1" DIA IRON PIPE 3' EAST OF A WOODS ROAD WITH A 1-1/2" DIA IRON PIPE 0.4' NORTH AND A STEEL FENCE POST 1' SOUTHEAST. THIS CORNER LOCATION AGREES WITH THE CALLS FOR SWAMP EDGES IN THE ORIGINAL NOTES TO THE NORTH, SOUTH, EAST, AND WEST AND THE DISTANCES TO THE 1/4 CORNERS TO THE SOUTH, EAST AND WEST AND TO THE SECTION CORNER TO THE NORTH ALL ARE WITHIN ACCEPTABLE TOLERANCES. I REPLACED THE 1" DIA. IRON PIPE WITH A LINCOLN COUNTY ALUMINUM BERNSTEN BREAKAWAY MONUMENT, MADE TWO BEARING TREES AND SET TWO 3/4" DIA. REBAR WITH ALUMINUM CAPS AS REFERENCE MONUMENTS.

(c)(d)(e) PLAN VIEW OF CORNER WITH TIES TO AT LEAST FOUR WITNESSES. IF IN DISAGREEMENT WITH PREVIOUSLY ESTABLISHED CORNER, SHOW THE DISTANCES BETWEEN THE TWO CORNERS AND ALSO INDICATE THE TIE TO THE DISPUTED CORNER.



I JEFFREY D. ANDERSON, REGISTERED LAND SURVEYOR NO. 2697, HEREBY CERTIFY THAT THE CORNER-LOCATION ON THIS RECORD WAS REFERENCED BY ME OR UNDER MY DIRECTION AND CONTROL AND THAT THIS U.S. PUBLIC LAND SURVEY MONUMENT RECORD IS COMPLETE TO THE BEST OF MY KNOWLEDGE AND BELIEF.

Jeffrey D. Anderson 2/23/10
 SIGNATURE



INDEX NO. E-13

SOUTHWEST CORNER, SECTION 3 – 1" DIA. IRON PIPE FOUND



FACING NORTH



FACING SOUTH



FACING EAST



FACING WEST



LINCOLN COUNTY MONUMENT SET

