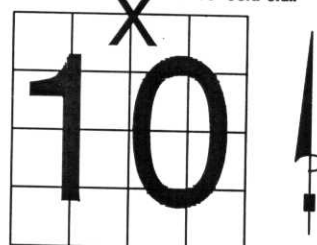


U.S. PUBLIC LAND SURVEY MONUMENT RECORD

NOTE: THIS FORM IS INTENDED AND DESIGNED TO FULFILL ALL REQUIREMENTS OF WISCONSIN ADMINISTRATIVE CODE, CHAPTER A-E 7.08 U.S. PUBLIC LAND SURVEY MONUMENT RECORD (3) (a) (b) (c) (d) (e) (f) (g) (h) (i). AN ADDITIONAL SHEET MAY BE ADDED IF NECESSARY TO CONFORM WITH SAID REQUIREMENTS.

(a) CORNER LOCATION: TOWNSHIP 32 NORTH
 RANGE 5 EAST/WEST
 TOWN/CITY/VILLAGE HARDING
 COUNTY LINCOLN



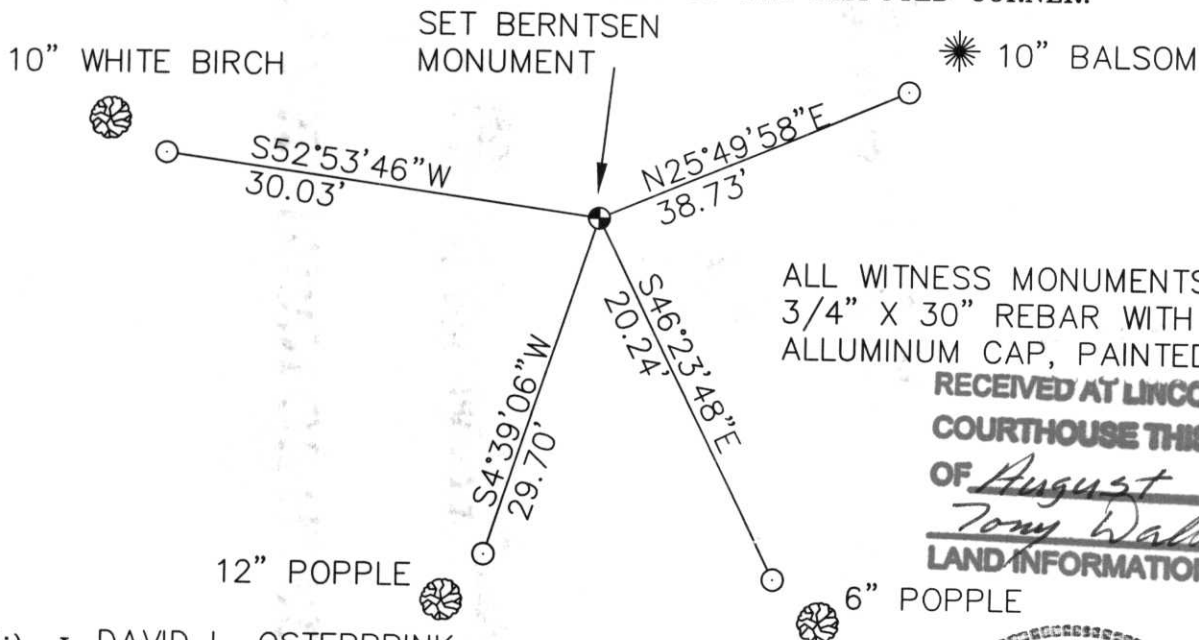
SECTION 10

(b) (f) (g) (h) DESCRIPTION OF MONUMENT FOUND AT THIS CORNER AND IF IT WAS ACCEPTED, STATE ALL EVIDENCE (MATERIAL, TESTIMONIAL, OCCUPATIONAL, PLATS, RECORDS, OTHER MONUMENTS) USED AS BASIS FOR ACCEPTING. IF NOT ACCEPTED OR IF NOTHING WAS FOUND, STATE EVIDENCE USED AS BASIS FOR ESTABLISHING LOCATION. IF REESTABLISHED THROUGH LOST CORNER PROPORTIONATE METHODS, INDICATE ALL MONUMENTS, DISTANCES AND DIRECTIONS USED TO ESTABLISH. INDICATE TYPE OF MONUMENT FOUND OR SET AND SIGN POST.

ORIGINAL CORNER SET IN NOVEMBER, 1852, BY RICK CHANEY. DAVID AMENT, LOCAL LAND OWNER, SAID THAT IN THE 40'S, A LARGE FOREST FIRE BURNT EVERYTHING IN THIS TOWNSHIP. THERE ARE NO LARGE STUMPS IN THIS SECTION. FOUND NO EVIDENCE OF ORIGINAL TIES OR ORIGINAL WOOD POST.

DAVID AMENT, LONG TIME LOCAL RESIDENT, SAID THERE WAS A 1" IRON PIPE FOR THIS CORNER. TRAVERSED TO AREA, FOUND 1" IRON PIPE. FOUND OLD RIBBON IN TREES AROUND PIPE. HAD BEEN CLEAR CUT TO NORTH HELD AS CORNER. SET BERNTSEN MONUMENT, TIED OUT.

(c) (d) (e) PLAN VIEW OF CORNER WITH TIES TO AT LEAST 4 WITNESS MONUMENTS. IF IN DISAGREEMENT WITH PREVIOUSLY ESTABLISHED CORNER, SHOW THE DISTANCES BETWEEN THE TWO CORNERS AND ALSO INDICATE THE TIES TO THE DISPUTED CORNER.



ALL WITNESS MONUMENTS ARE 3/4" X 30" REBAR WITH ALLUMINUM CAP, PAINTED ORANGE
 RECEIVED AT LINCOLN COUNTY COURTHOUSE THIS 14TH DAY OF August 20 01
Tony Walker
 LAND INFORMATION OFFICE

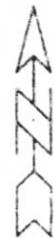
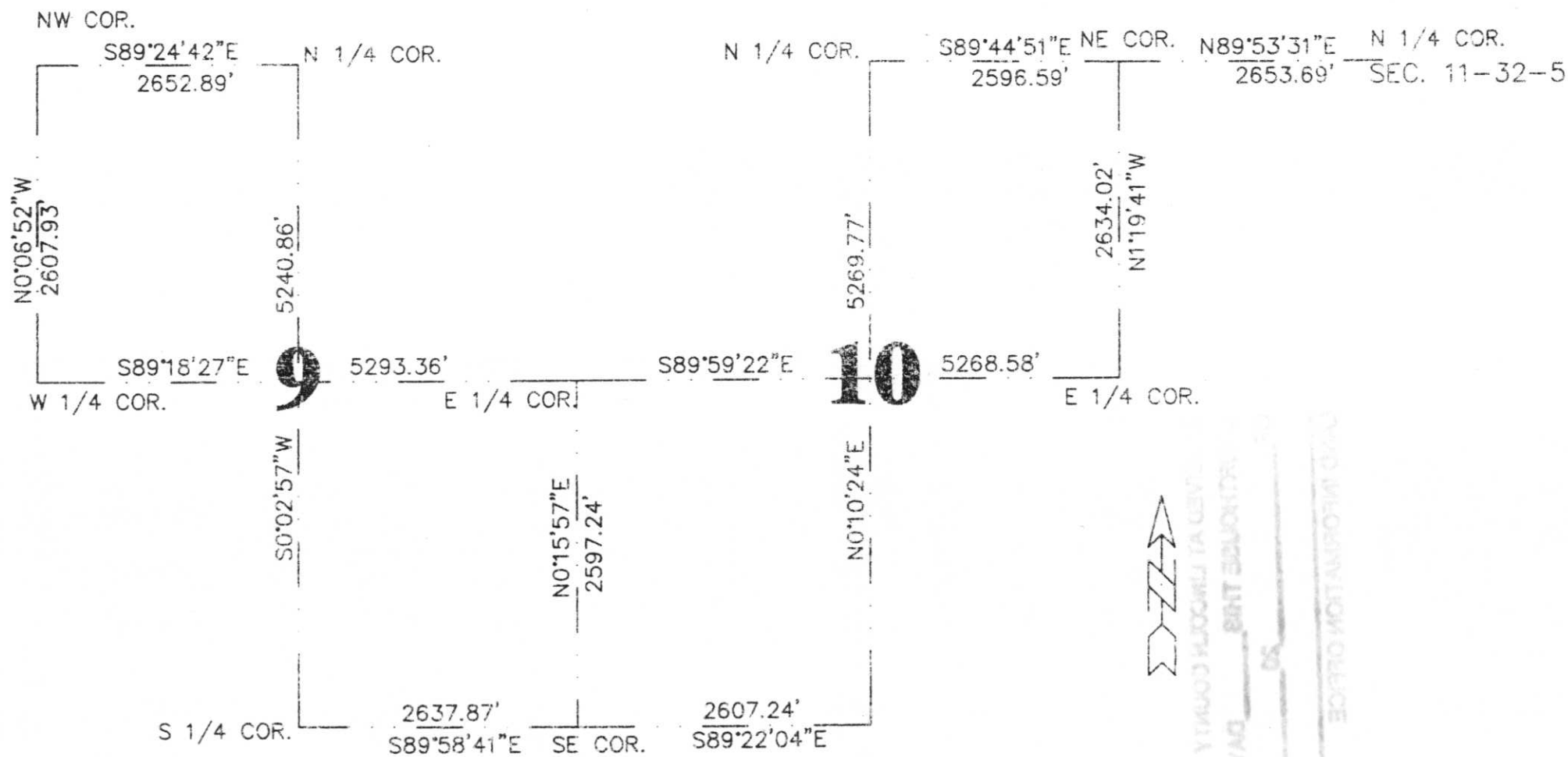
(i) I, DAVID L. OSTERBRINK
 (TYPE OR PRINT NAME) CERTIFY THAT THE CORNER LOCATION ON THIS RECORD WAS DETERMINED BY ME OR UNDER MY DIRECTION AND CONTROL AND THAT THIS U.S. PUBLIC LAND SURVEY MONUMENT RECORD IS CORRECT AND COMPLETE TO THE BEST OF MY KNOWLEDGE AND BELIEF.

David L. Osterbrink AUGUST 8, 2001
 SIGNATURE DATE



INDEX NO. E-15

SECTION SUMMARY, SECTIONS 9 & 10, T 32N, R5E, TOWN OF HARDING



YTHUOJ HJOCOMU TA UEM
 VAD 8817 EDUJONTR
 05
 CIVIL INFORMATION OFFICE

SEC. 11-32-5









