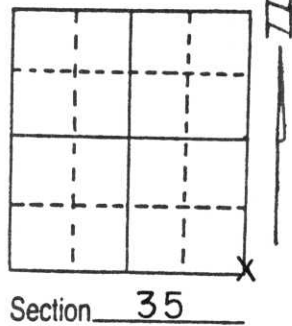


U.S. PUBLIC LAND SURVEY MONUMENT RECORD

Note: This form is intended and designed to fulfill all requirements of Wisconsin Administrative Code, Chapter A-E 5.02, U.S. Public Land Survey Monument Record (3) (a) (b) (c) (d) (e) (f) (g) (h) (i). An additional sheet may be added if necessary to conform with said requirements.

(a) Corner location: Township 32 North
 Range 4 East

Town/City/Village CORNING
 County LINCOLN

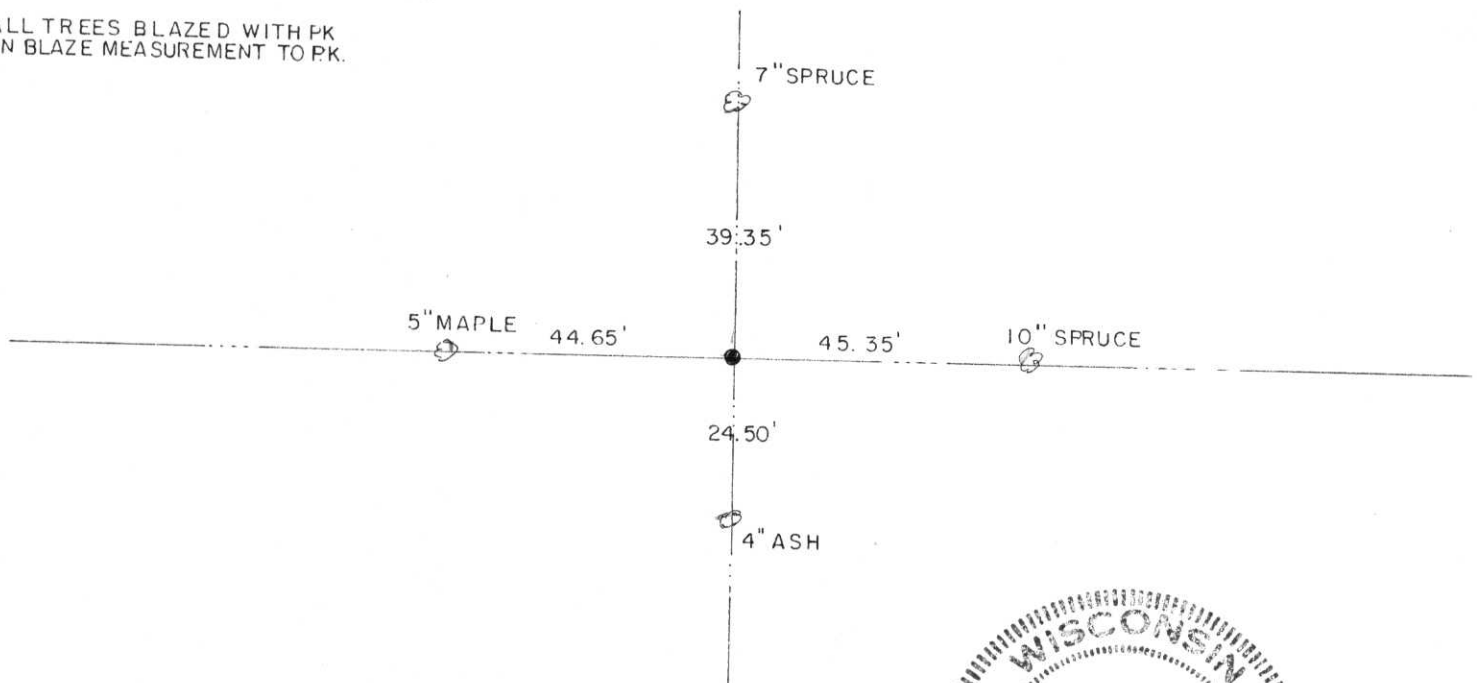


(b) (f) (g) (h) Description of monument found at this corner and if it was accepted, state all evidence (material, testimonial, occupational, plats, records, other monuments) used as a basis for accepting. If not accepted or if nothing was found, state evidence used as basis for establishing location. If reestablished through lost corner proportionate methods, indicate all monuments, distances and directions used to establish.

Found existing 3/4" Iron Pipe and Squared Wood Post set by Paper Company. Tied corner into extensive traverse of Sections 35 & 36 of T32N, R4E, and Sections 1 & 2 of T31N, R4E. Accepted as corner and replaced with 1" x 30" Solid Iron Bar and tied out. March 1, 1994

(c) (d) (e) Plan view of corner with ties to at least 4 witness monuments. If in disagreement with previously established corner, show the distances between the two corners and also indicate the ties to the disputed corner.

ALL TREES BLAZED WITH PK
 IN BLAZE MEASUREMENT TO PK.



(i) I, Gary R. Krueger RLS NO.1619
 (type or print name) certify that the corner location on this record was determined by me or under my direction and control and that this U.S. Public Land Survey Monument Record is correct and complete to the best of my knowledge and belief.



Gary R. Krueger Signature 10-17-94 Date

Index No. 1-21





